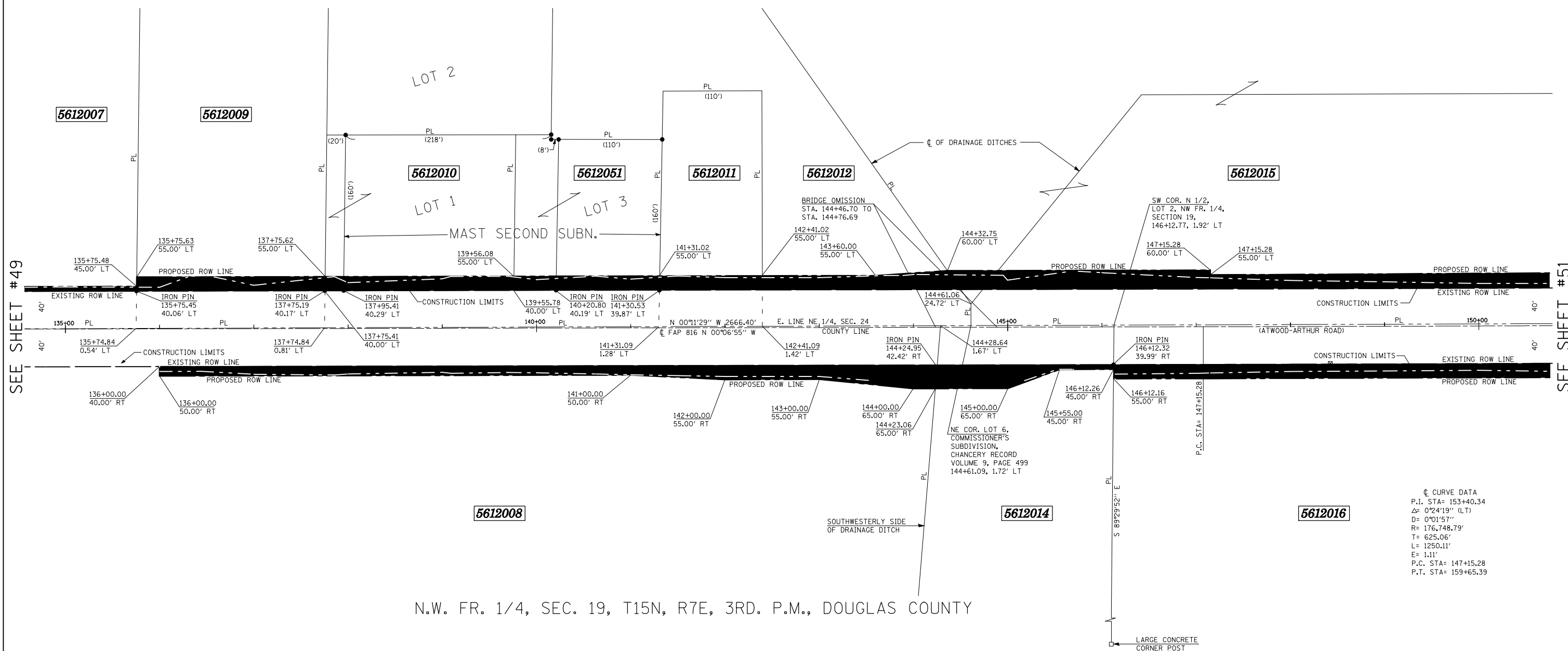


FAP RTE.	SECTION	COUNTY	TOTAL SHEETS	SHEET NO.
816	BRS-1 & (6BR)BR	DOUGLAS	176	50
STA. 135+00		TO STA. 150+00		
FED. ROAD DIST. NO. 7		ILLINOIS FED. AID PROJECT		
CONTRACT NO. 90711				

N.E. 1/4, SEC. 24, T15N, R6E, 3RD. P.M., MOULTRIE COUNTY

ROW SHEET 4 OF 18

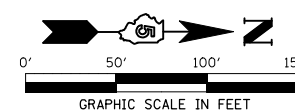


N.W. FR. 1/4, SEC. 19, T15N, R7E, 3RD. P.M., DOUGLAS COUNTY

* AREA OF REMAINING IS AN ESTIMATED AREA

PARCEL NO.	OWNER	AREA OF WHOLE	AREA TAKEN	PREV. DED OR USE	AREA * REMAINING	TEMPORARY EASEMENT	EASEMENT PURPOSE
5612008	SUSIE J. HERSCHBERGER	17.30 AC.±	1.018 AC.±	0.781 AC.±	16.282 AC.±		
5612009	FERRELLGAS, L.P.	2.18 AC.±	0.249 AC.±	0.180 AC.±	1.931 AC.±		
5612010	TIMOTHY R. MAST	0.683 AC.±	0.062 AC.±	0.000 AC.±	0.621 AC.±		
5612051	PAUL R. MAST	0.612 AC.±	0.060 AC.±	0.000 AC.±	0.552 AC.±		
5612011	R. DENNIS MILLER	0.631 AC.±	0.135 AC.±	0.097 AC.±	0.496 AC.±		
5612012	MARCIA K. MILLER	2.72 AC.±	0.266 AC.±	0.192 AC.±	2.454 AC.±		
5612014	DAVID P. AND SHIRLEY HALE	6.638 AC.±	0.247 AC.±	0.178 AC.±	6.391 AC.±		
5612013	DELETED						

- LEGEND**
- ⊗ R.O.W. MARKER FOUND
 - - - EXISTING FENCE
 - () RECORD DATA
 - IRON PIN/PIPE FOUND
 - SET COTTON SPINDLE
 - PROPERTY LINE
 - ▲ SET PK NAIL
 - ▲ FOUND PK NAIL
 - ⊕ FOUND CROSS IN CONCRETE
 - FOUND STONE OR VAULT
- BEARINGS BASED ON IL STATE PLANE COORDINATES, NAD 83, EAST ZONE.



REVISIONS	
NAME	DATE

ILLINOIS DEPARTMENT OF TRANSPORTATION
RIGHT OF WAY PLAN
 ROUTE FAP 816 (ATWOOD-ARTHUR ROAD)
 SECTION 6RS-1 & (6BR)BR
 COUNTY MOULTRIE & DOUGLAS
 JOB NO. R-95-061-02
 SECTION 24, T.15N., R.6E., 3RD P.M.
 SECTION 19, T.15N., R.7E., 3RD P.M.
 STA. 135+00 STA. 150+00
 DRAWN TFG
 SCALE: 1"= 50'
 CHECKED PDN/BRM

SEE SHEET #49

SEE SHEET #51