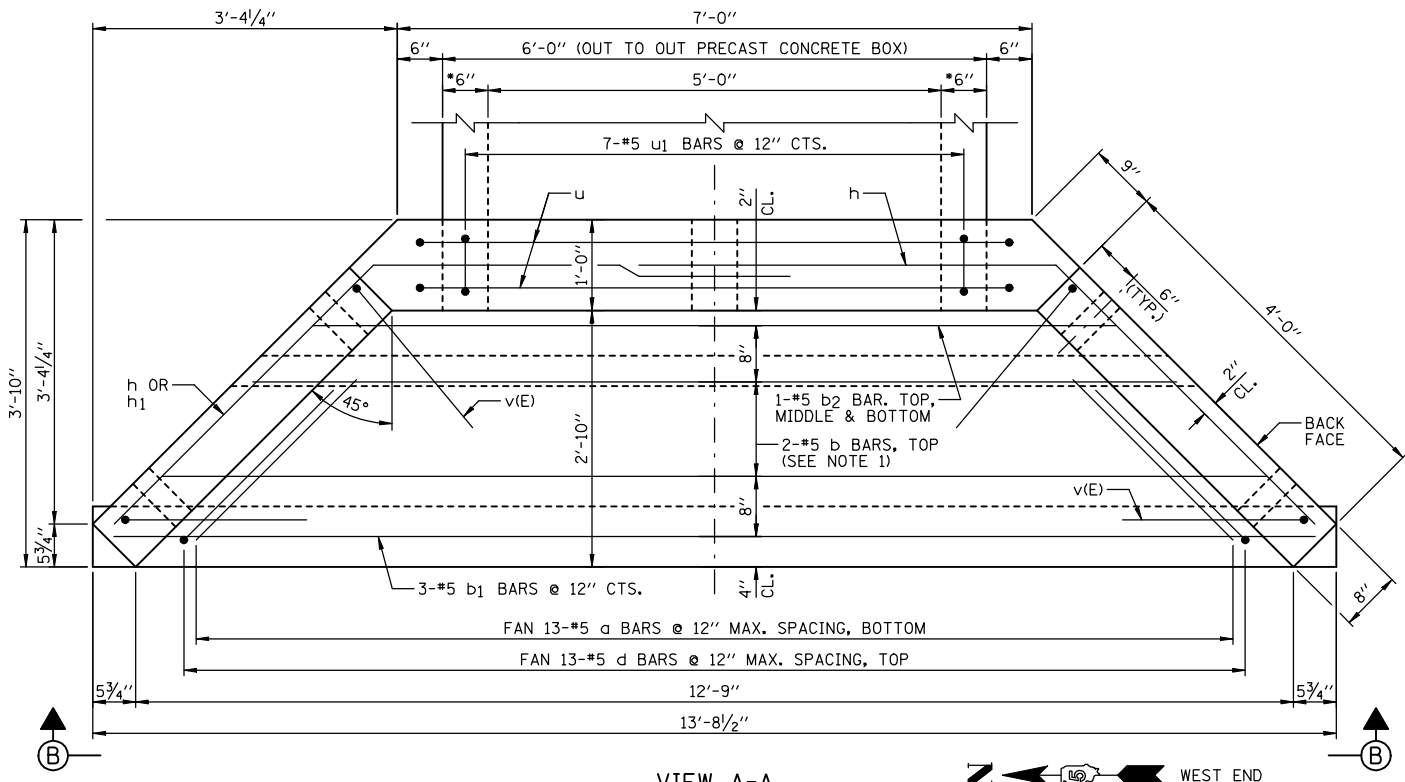
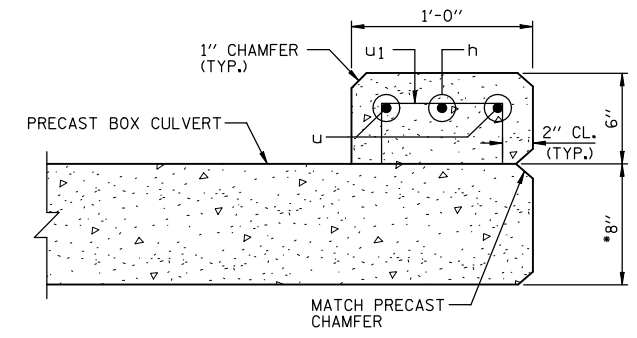


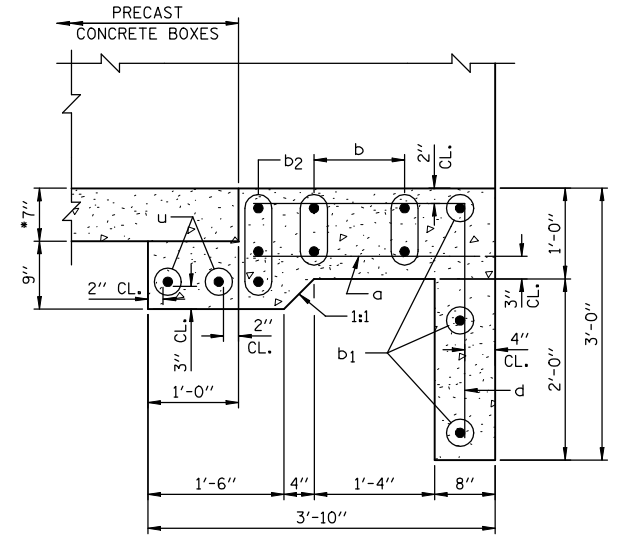
F.A.P. RTE.	SECTION	COUNTY	TOTAL SHEETS	SHEET NO.
816	6RS-1 & (6BR)R	DOUGLAS	176	72
STA.		TO STA.		
FED. ROAD DIST. NO.	ILLINOIS	FED. AID PROJECT		
CONTRACT NO. 90711		SHEET NO. A2		
OF 3 SHEETS				



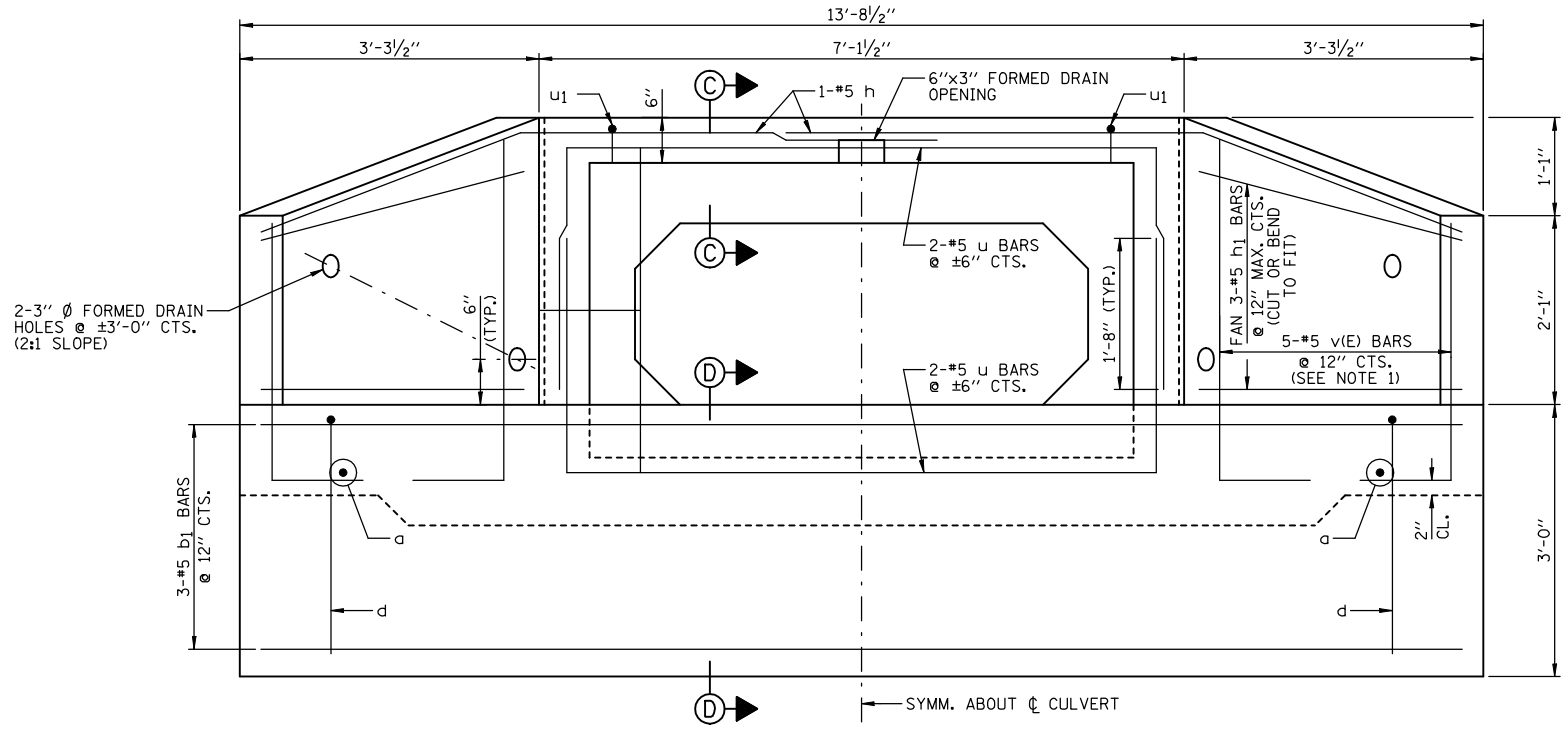
**VIEW A-A**  
 • CONFIRM WALL THICKNESS WITH PRECASTER



**SECTION C-C**  
 • CONFIRM SLAB THICKNESS WITH PRECASTER



**SECTION D-D**  
 • CONFIRM SLAB THICKNESS WITH PRECASTER



**END ELEVATION (VIEW B-B)**

- NOTES:**
- 1.) ORDER b & v(E) BARS FULL LENGTH. CUT ACCORDING TO BAR CUTTING DIAGRAM ON SHEET A1. USE REMAINDER OF b BARS IN BOTTOM OF SLAB & REMAINDER OF v(E) BARS IN OPPOSITE WINGWALL.
  - 2.) MINIMUM BAR LAP: #5 = 1'-8"
  - 3.) WORK THIS SHEET WITH SHEET A1.
  - 4.) FOR LOCATION OF VIEW A-A SEE SHEET A1.

REVISIONS	
NAME	DATE

ILLINOIS DEPARTMENT OF TRANSPORTATION  
**CULVERT #1 REPLACEMENT**  
 (STA. 111+42.14)  
 FAP ROUTE 816  
 ATWOOD-ARTHUR RD  
 SECTION 6RS-1 & (6BR)R  
 DOUGLAS COUNTY

DRAWN BY: DJM  
 CHECKED BY: MSW  
 DATE: 11/24/03