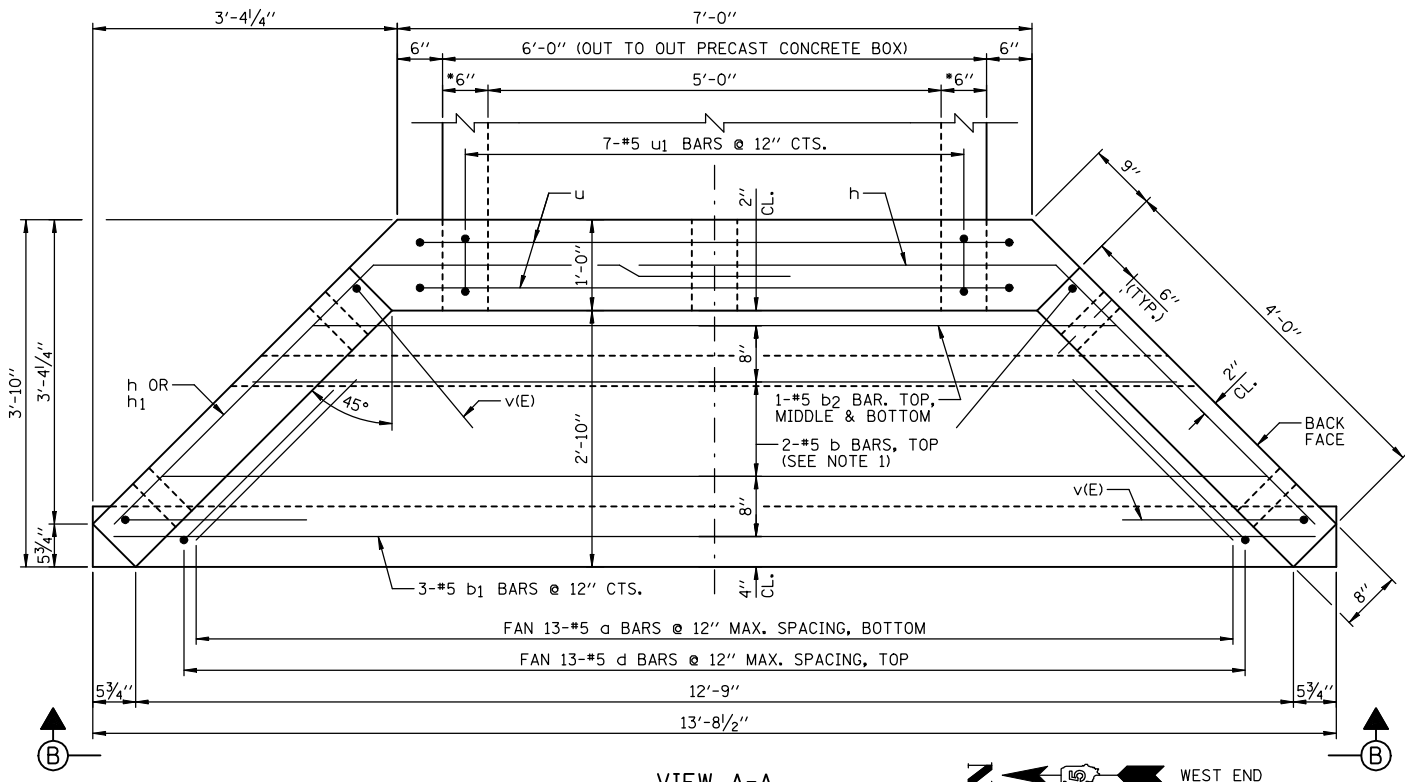
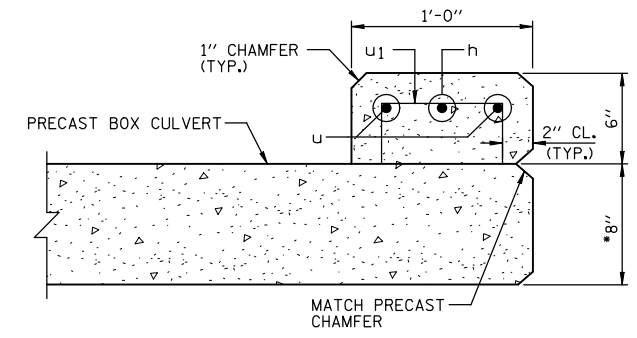


F.A.P. RTE.	SECTION	COUNTY	TOTAL SHEETS	SHEET NO.
B16	6RS-1 & (6BR)R	DOUGLAS	176	78
STA.		TO STA.		
FED. ROAD DIST. NO.	ILLINOIS	FED. AID PROJECT		
CONTRACT NO. 90711		SHEET NO. C2		

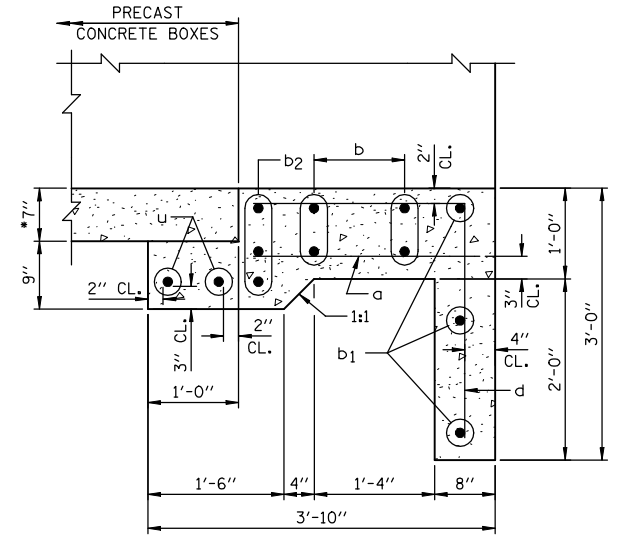
OF 3 SHEETS



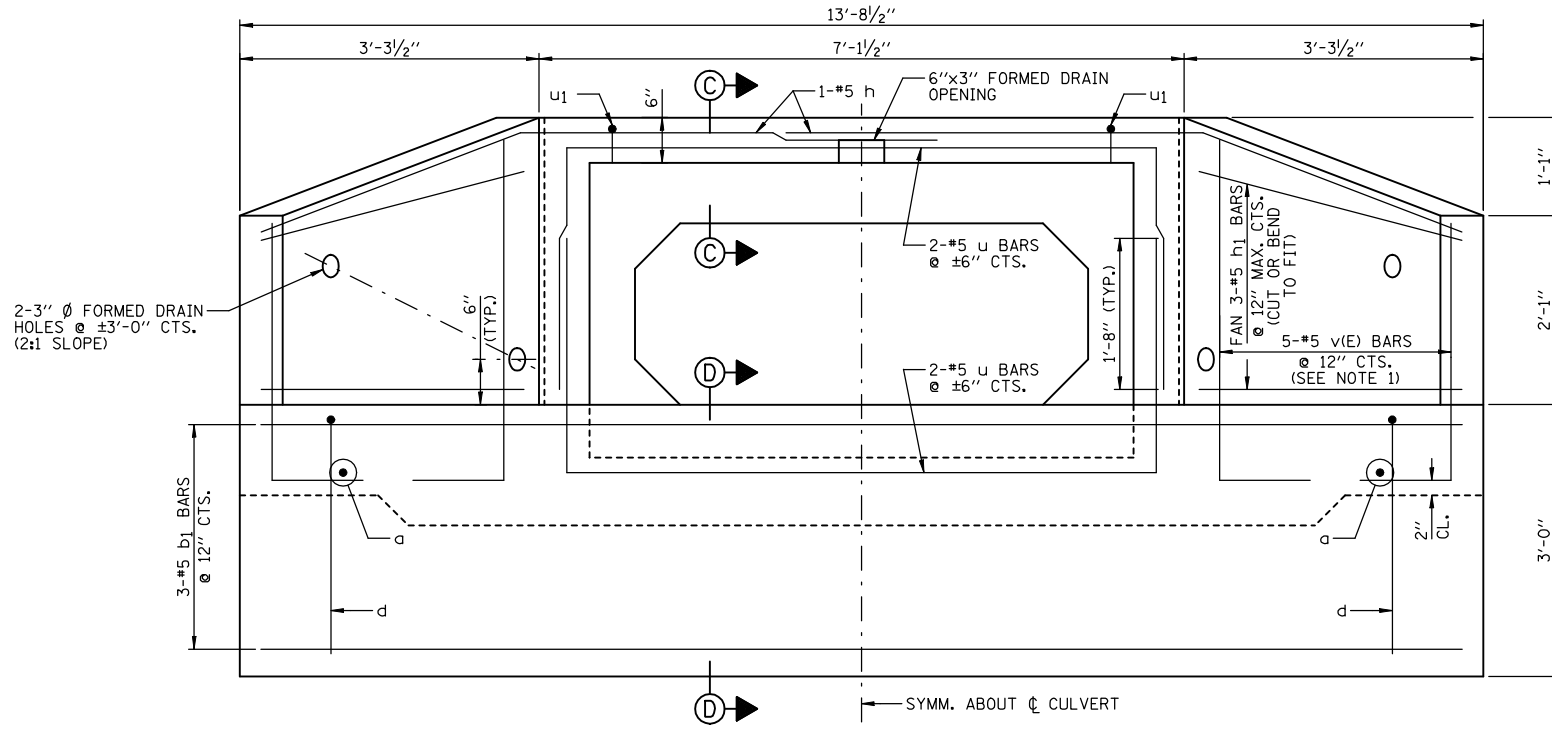
VIEW A-A
 • CONFIRM WALL THICKNESS WITH PRECASTER



SECTION C-C
 • CONFIRM SLAB THICKNESS WITH PRECASTER



SECTION D-D
 • CONFIRM SLAB THICKNESS WITH PRECASTER



END ELEVATION (VIEW B-B)

NOTES:

- 1.) ORDER b & v(E) BARS FULL LENGTH. CUT ACCORDING TO BAR CUTTING DIAGRAM ON SHEET C1. USE REMAINDER OF b BARS IN BOTTOM OF SLAB & REMAINDER OF v(E) BARS IN OPPOSITE WINGWALL.
- 2.) MINIMUM BAR LAP: #5 = 1'-8"
- 3.) WORK THIS SHEET WITH SHEET C1.
- 4.) FOR LOCATION OF VIEW A-A SEE SHEET C1.

REVISIONS	
NAME	DATE

ILLINOIS DEPARTMENT OF TRANSPORTATION
CULVERT #3 REPLACEMENT
 (STA. 179+95.00)
 FAP ROUTE 816
 ATWOOD-ARTHUR RD
 SECTION 6RS-1 & (6BR)R
 DOUGLAS COUNTY
 DRAWN BY: DJM
 CHECKED BY: MSW
 DATE: 11/24/03