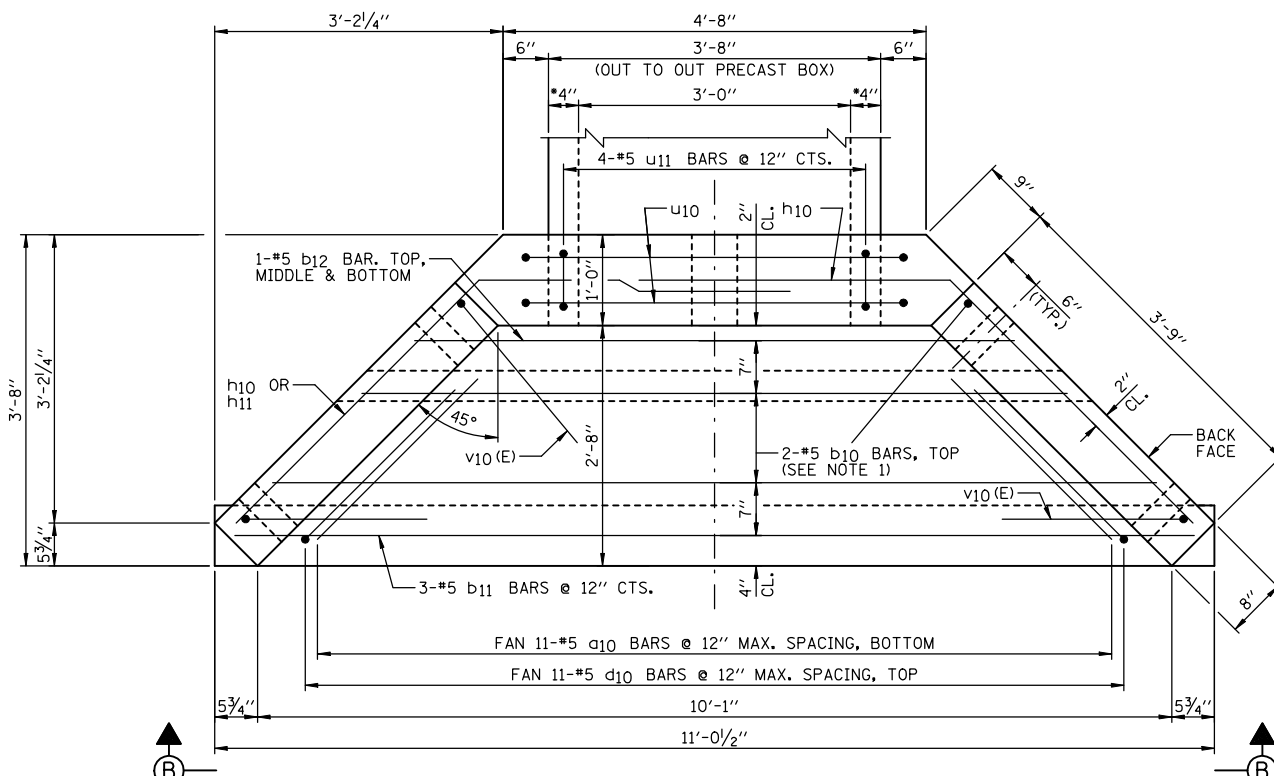
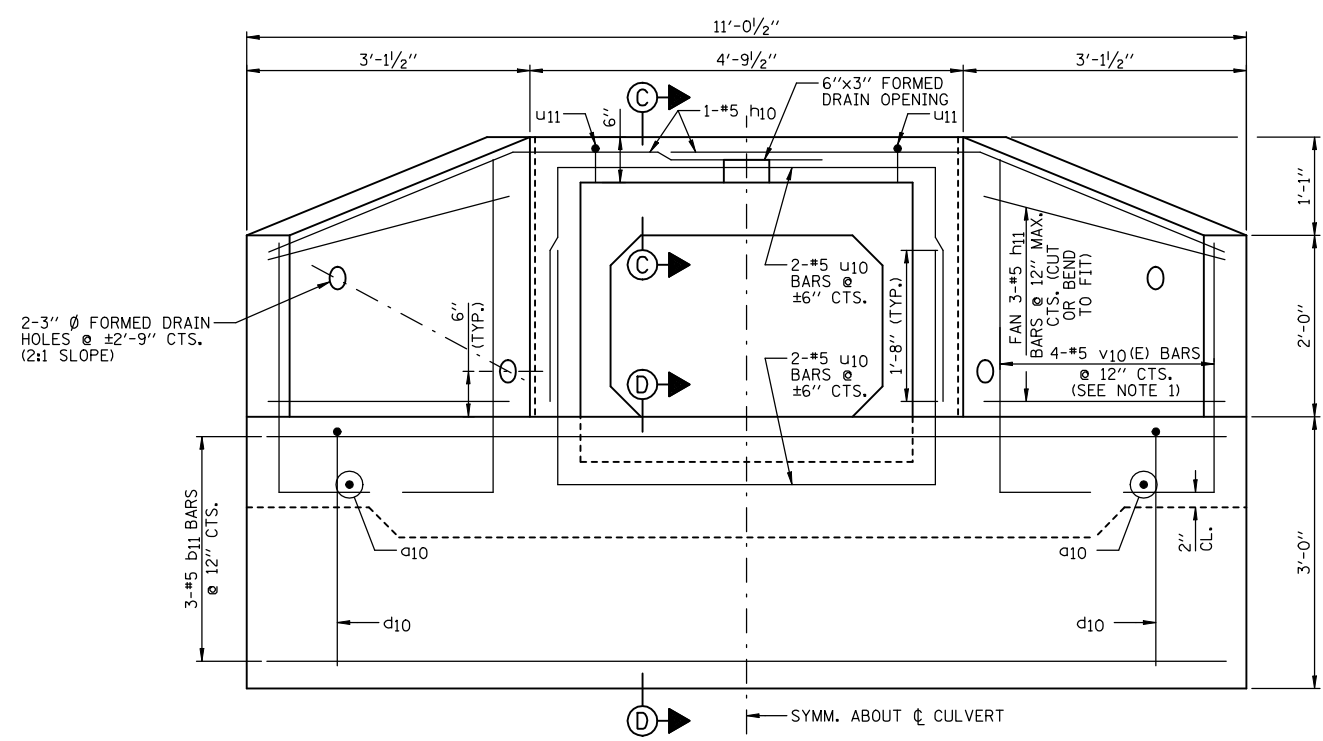


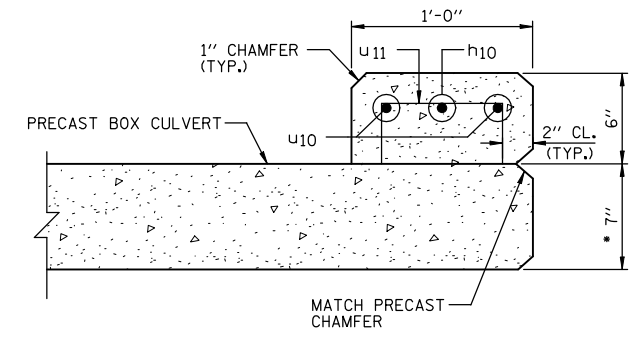
F.A.P. RTE.	SECTION	COUNTY	TOTAL SHEETS	SHEET NO.
B16	GRS-1 & (6BR)BR	DOUGLAS	176	87
STA.		TO STA.		
FED. ROAD DIST. NO.	ILLINOIS	FED. AID PROJECT		
CONTRACT NO. 90711		SHEET NO. F2		
OF 3 SHEETS				



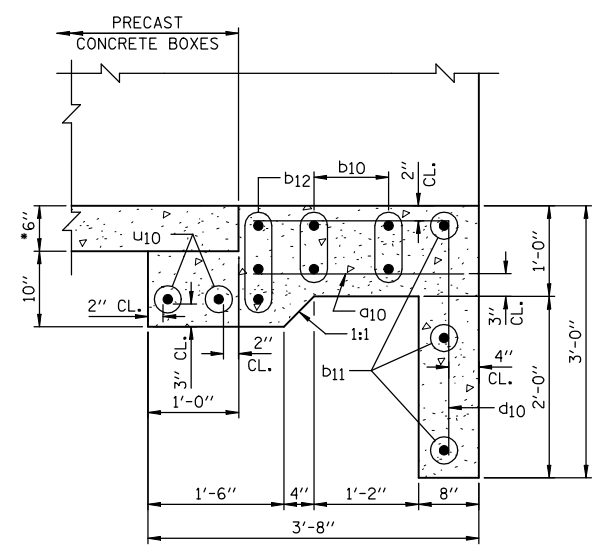
VIEW A-A
 • CONFIRM WALL THICKNESS WITH PRECASTER
 WEST END
 EAST END



END ELEVATION (VIEW B-B)



SECTION C-C
 • CONFIRM SLAB THICKNESS WITH PRECASTER



SECTION D-D
 • CONFIRM SLAB THICKNESS WITH PRECASTER

- NOTES:**
- 1.) ORDER b10 & v10(E) BARS FULL LENGTH. CUT ACCORDING TO BAR CUTTING DIAGRAM ON SHEET F1. USE REMAINDER OF b10 BARS IN BOTTOM OF SLAB & REMAINDER OF v10(E) BARS IN OPPOSITE WINGWALL.
 - 2.) MINIMUM BAR LAP: #5 = 1'-8"
 - 3.) WORK THIS SHEET WITH SHEET F1.
 - 4.) FOR LOCATION OF VIEW A-A SEE SHEET F1.

REVISIONS	
NAME	DATE

ILLINOIS DEPARTMENT OF TRANSPORTATION
CULVERT #6 REPLACEMENT
 (STA. 281+71.66)
 FAP ROUTE 816
 ATWOOD-ARTHUR RD
 SECTION 6RS-1 & (6BR)BR
 DOUGLAS COUNTY
 DRAWN BY: DJM
 CHECKED BY: MSW
 DATE: 11/24/03