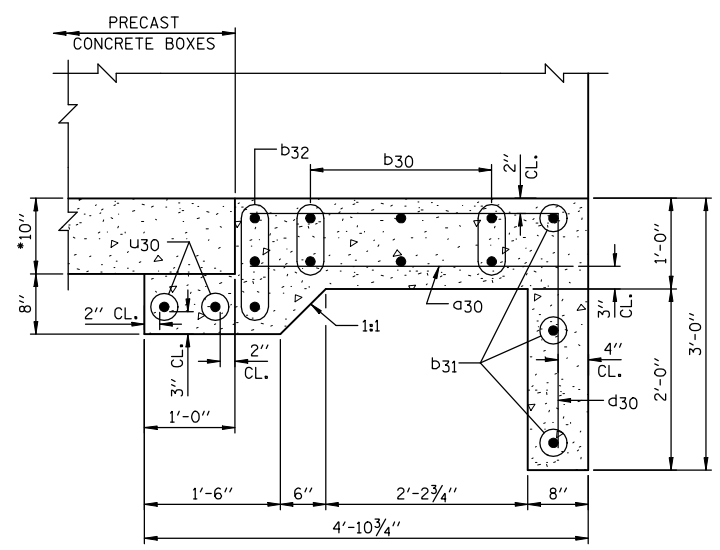
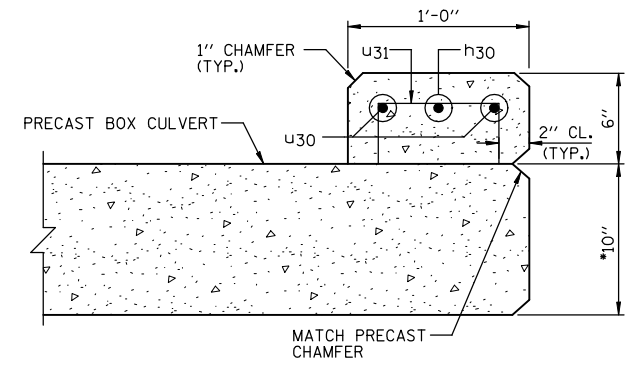
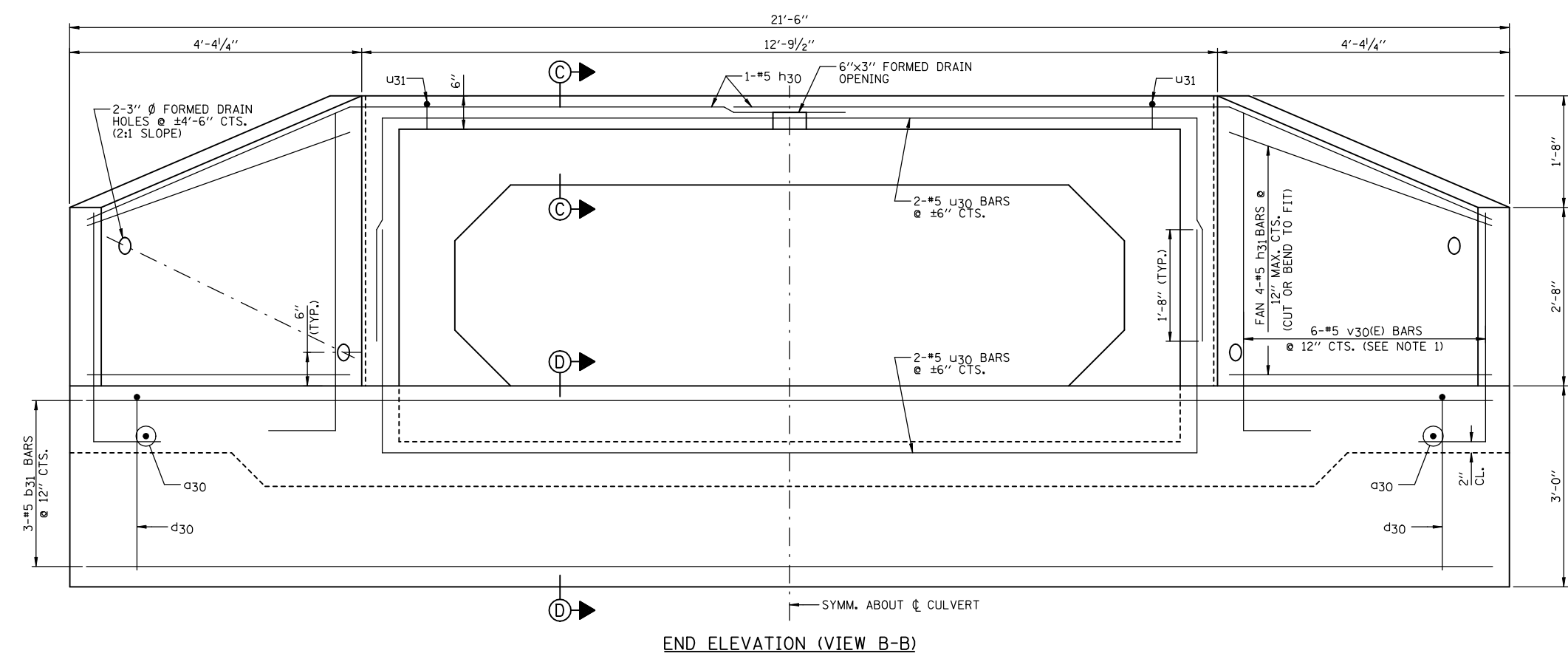
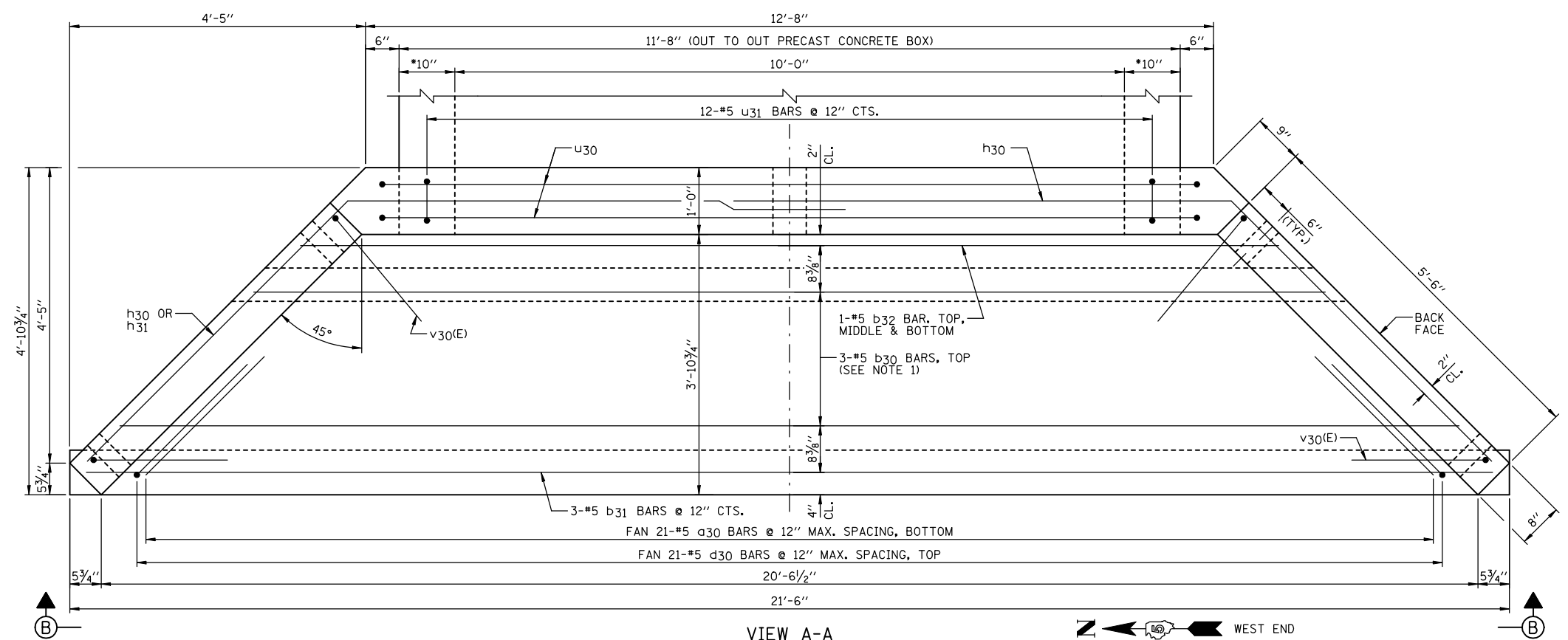


| | | | | |
|---------------------|----------------|------------------|--------------|-----------|
| F.A.P. RTE. | SECTION | COUNTY | TOTAL SHEETS | SHEET NO. |
| 816 | 6RS-1 & (6BR)R | DOUGLAS | 176 | 92 |
| STA. | | TO STA. | | |
| FED. ROAD DIST. NO. | ILLINOIS | FED. AID PROJECT | | |
| CONTRACT NO. 90711 | | SHEET NO. H2 | | |
| OF 3 SHEETS | | | | |



- NOTES:**
- 1.) ORDER b30 & v30(E) BARS FULL LENGTH. CUT ACCORDING TO BAR CUTTING DIAGRAM ON SHEET H1. USE REMAINDER OF b30 BARS IN BOTTOM OF SLAB & REMAINDER OF v30(E) BARS IN OPPOSITE WINGWALL.
 - 2.) MINIMUM BAR LAP: #5 = 1'-8"
 - 3.) WORK THIS SHEET WITH SHEET H1.
 - 4.) FOR LOCATION OF VIEW A-A SEE SHEET H1.

| REVISIONS | |
|-----------|------|
| NAME | DATE |
| | |
| | |
| | |
| | |
| | |
| | |

ILLINOIS DEPARTMENT OF TRANSPORTATION
CULVERT #8 REPLACEMENT
 (STA. 322+57.75)
 FAP ROUTE 816
 ATWOOD-ARTHUR RD
 SECTION 6RS-1 & (6BR)R
 DOUGLAS COUNTY
 PR. STR. 021-8050
 DATE: 11/24/03
 DRAWN BY: DJM
 CHECKED BY: MSW