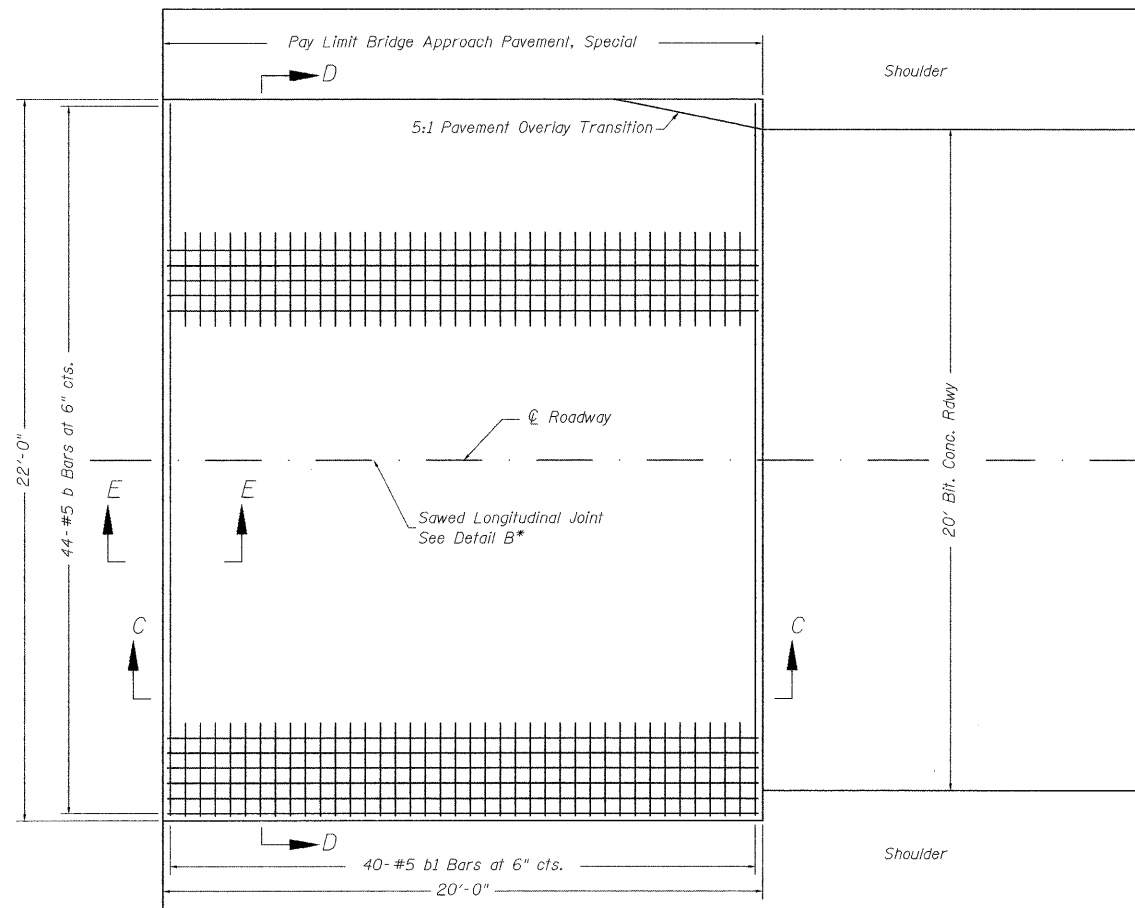
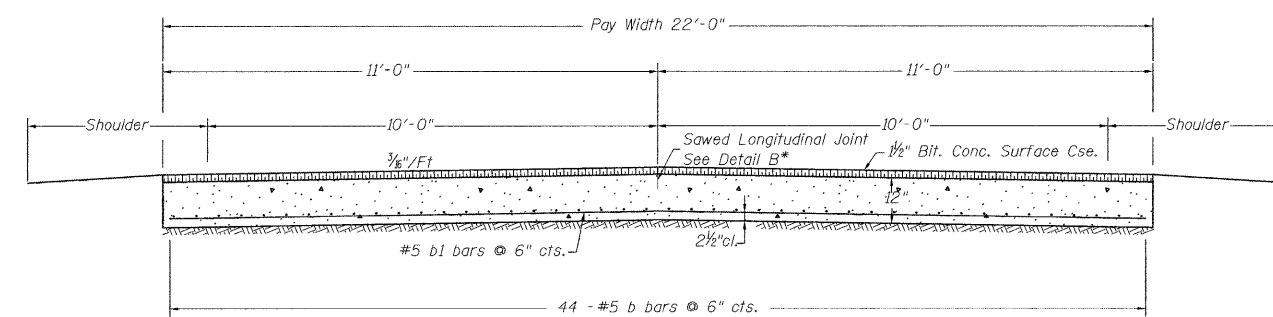
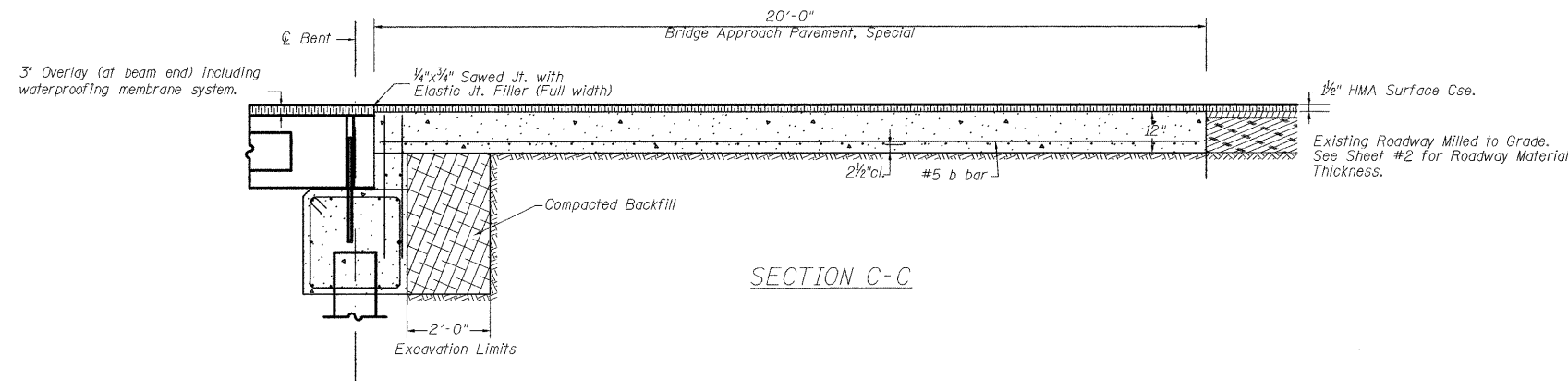


COUNTY	ROUTE	SECTION	SHEET
ADAMS	FAS 591	07-00202-00-BR	17
PROJECT NO. BR5-059(K105)			
BRIDGE APPR. PAVEMENT, SPECIAL			



PLAN



SECTION D-D

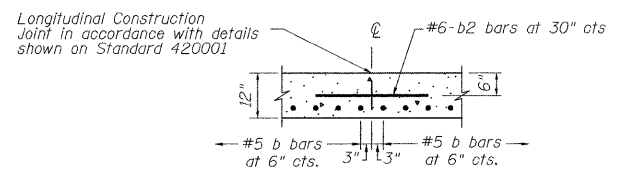
BILL OF MATERIAL FOR ONE APPROACH

Bar	No.	Size	Length	Shape
b	44	#5	19'-8"	—
b1	40	#5	21'-8"	—
b2	9	#6	2'-6"	—
Reinforcement Bars			1,850 Lbs.	*
Class SI Concrete			16.3 Cu. Yd.	*
Bridge Approach Pavement, Special			48.9 Sq. Yd.	

\* The Cost of Reinforcement Bars and Class SI Concrete is included in the Unit Price Bid for Bridge Approach Pavement, Special. Quantity is Not Included in Reinforcement Bars or Concrete Structures.

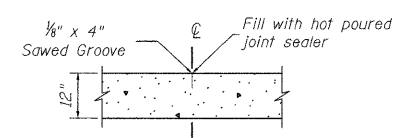
DESIGN STRESSES

f'c = 3,500 psi  
fy = 60,000 psi

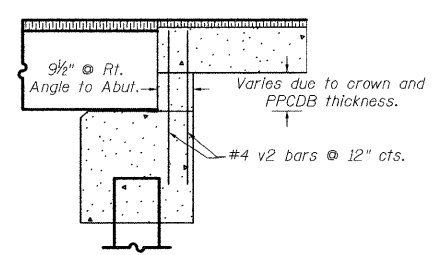


CONSTRUCTION JOINT

As approved by the Engineer, the Contractor may elect to reduce the widths of placement by use of the Optional Longitudinal Construction Joint shown. Joints shall be located at the edge of a traffic lane.



DETAIL B\*



SECTION E-E (PILE BENT ABUTMENT CAP)

REVISIONS	
NAME	DATE

BRIDGE APPR. PAVEMENT, SPECIAL

FAS 591 OVER  
TOURNEAR CREEK  
SEC 07-00202-00-BR  
ADAMS COUNTY  
STA 3+00  
STRUCTURE NUMBER 001-3337

SCALE: VERT. N/A  
HORIZ. N/A  
DATE: APR 2008

DRAWN BY JLS  
CHECKED BY CSB

PSBA Project No: R-08-011