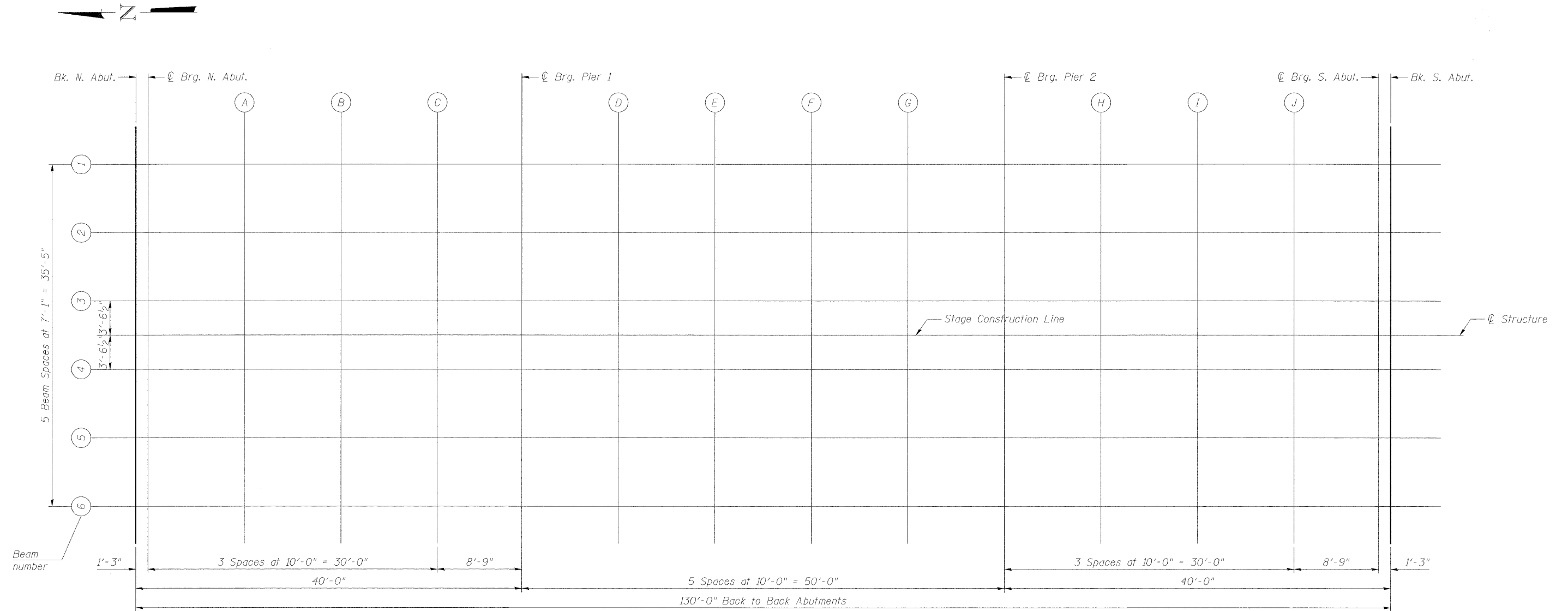


STATE OF ILLINOIS  
DEPARTMENT OF TRANSPORTATION

ROUTE NO.	SECTION	COUNTY	TOTAL SHEETS	SHEET NO.	SHEET NO. 6 22 SHEETS
FAP 322	24BR-1	FAYETTE	57	26	
FED. ROAD DIST. NO. 7	ILLINOIS	FED. AID PROJECT			

Contract # 94770



PLAN

BENTON & ASSOCIATES, INC.

DESIGNED	MBH
CHECKED	NRF
DRAWN	MBH
CHECKED	NRF

E-S

11-1-06

TOP OF SLAB ELEVATIONS  
US 51 / RICHLAND CREEK  
F.A.P. RT. 322  
FAYETTE COUNTY  
SN. 026-0104