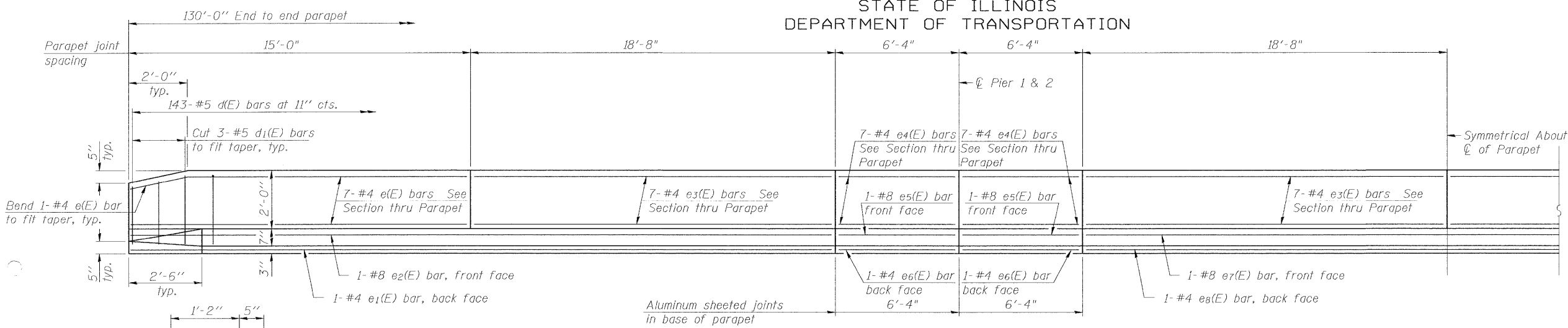


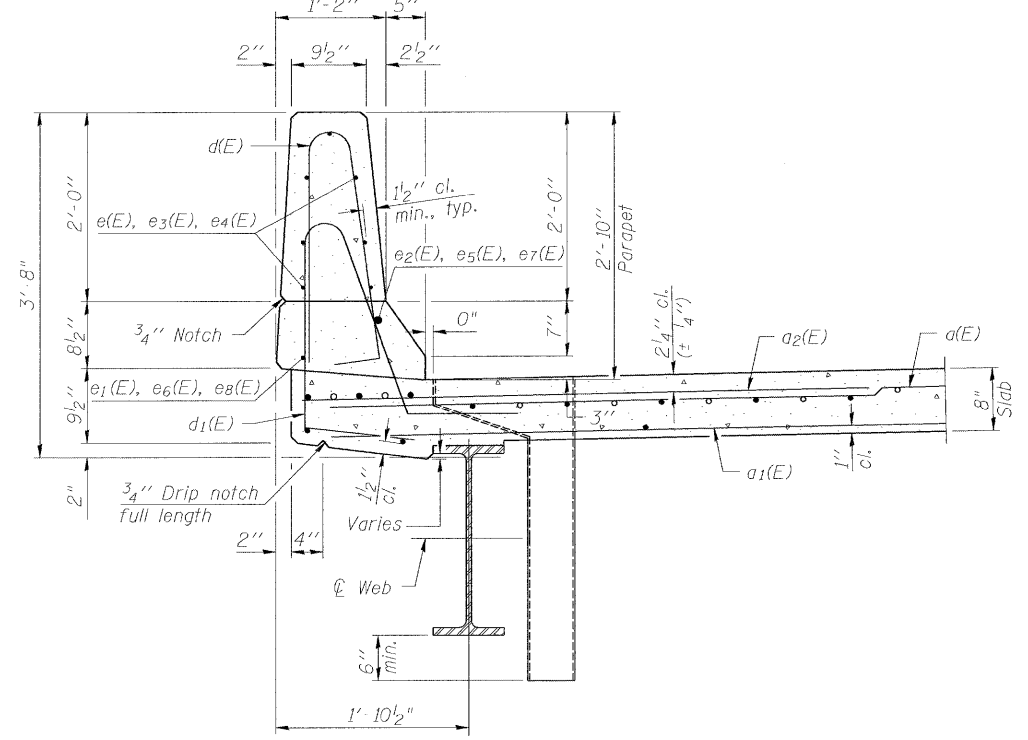
STATE OF ILLINOIS
DEPARTMENT OF TRANSPORTATION

ROUTE NO. FAP 322	SECTION 24BR-1	COUNTY FAYETTE	TOTAL SHEETS 57	SHEET NO. 31	SHEET NO. 11 22 SHEETS
FED. ROAD DIST. NO. 7		ILLINOIS		FED. AID PROJECT	

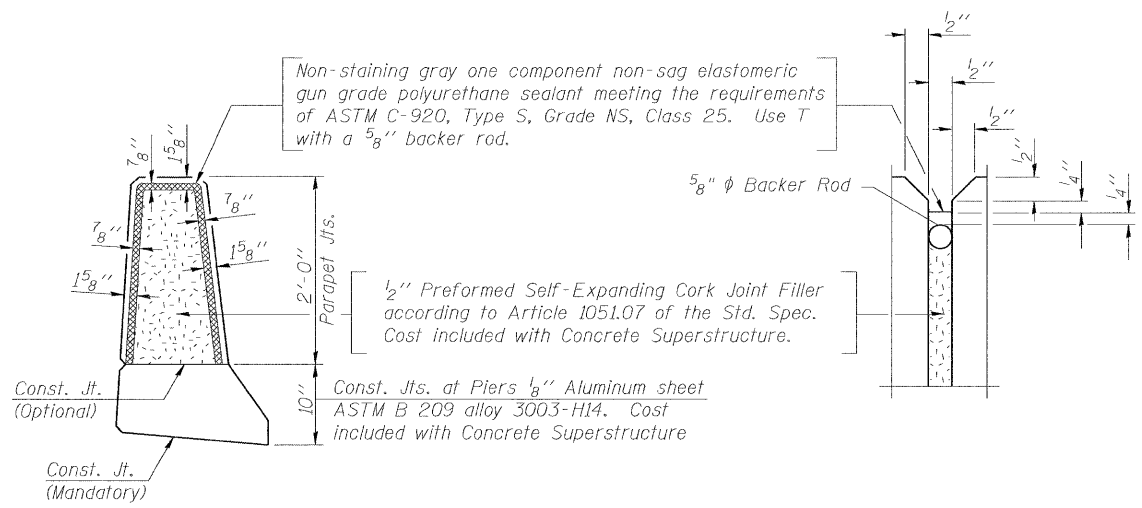
Contract # 94770



INSIDE ELEVATION OF PARAPET

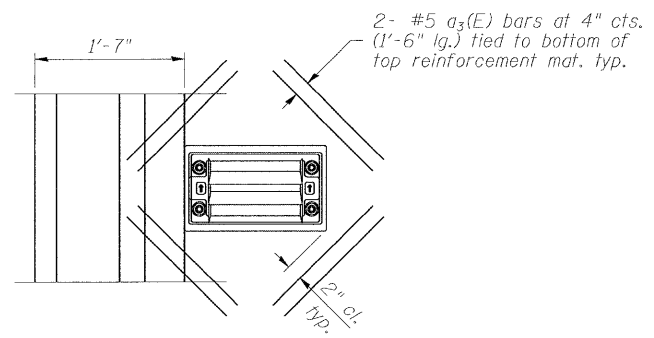


SECTION THRU PARAPET



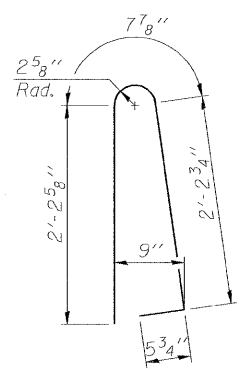
PARAPET JOINT DETAILS

Notes:
The exterior surfaces of the floor drains shall be painted with the finish coat as specified in the special provisions for Cleaning and Painting New Metal Structures. The exterior surfaces of the drains shall be cleaned according to Steel Structures Painting Council's Spec. SSPC-SPI prior to painting.
Fiberglass pipe shall conform to ASTM D 2996, with short-time rupture strength hoop tensile stress of 30,000 p.s.i. minimum.

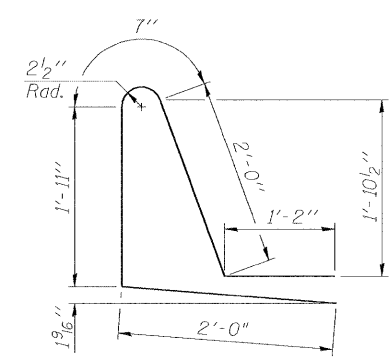


PLAN

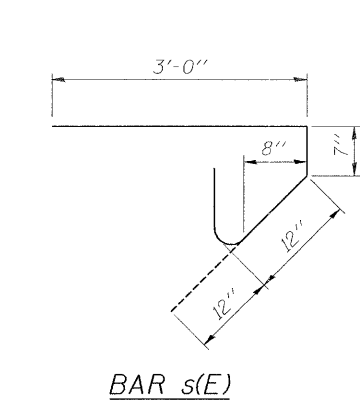
Note:
Cut longitudinal reinforcement to clear drainage scuppers.
Drains shall be located clear of all diaphragms.



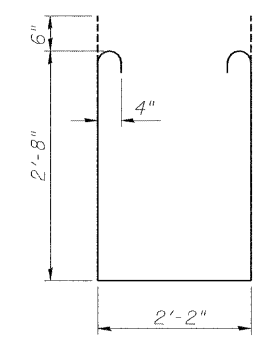
BAR d(E)



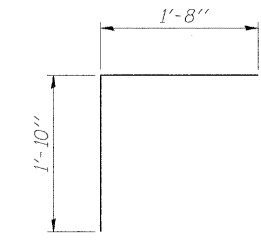
BAR d₁(E)



BAR s(E)



BAR s₁(E)



BAR v(E)

SUPERSTRUCTURE
BILL OF MATERIAL

Bar	No.	Size	Length	Shape
a(E)	418	#5	19'-3"	—
a ₁ (E)	314	#5	19'-3"	—
a ₂ (E)	210	#6	6'-0"	—
a ₃ (E)	144	#5	1'-6"	—
b(E)	168	#5	34'-3"	—
b ₁ (E)	80	#6	36'-0"	—
b ₂ (E)	160	#5	34'-3"	—
d(E)	286	#5	5'-7"	⌋
d ₁ (E)	286	#5	7'-8"	⌋
e(E)	28	#4	14'-8"	—
e ₁ (E)	4	#4	33'-8"	—
e ₂ (E)	4	#8	33'-8"	—
e ₃ (E)	56	#4	18'-4"	—
e ₄ (E)	56	#4	6'-0"	—
e ₅ (E)	8	#8	6'-0"	—
e ₆ (E)	8	#4	6'-0"	—
e ₇ (E)	2	#8	37'-0"	—
e ₈ (E)	2	#4	37'-0"	—
m(E)	8	#6	18'-6"	—
m ₁ (E)	12	#6	19'-5"	—
m ₂ (E)	24	#6	8'-7"	—
m ₃ (E)	8	#6	6'-1"	—
m ₄ (E)	4	#6	1'-3"	—
m ₅ (E)	4	#6	3'-0"	—
s(E)	92	#5	5'-7"	⌋
s ₁ (E)	80	#4	8'-6"	⌋
v(E)	76	#5	3'-6"	⌋
Reinforcement Bars, Epoxy Coated	Pound		41110	
Concrete Superstructure	Cu. Yds.		178	
Drainage Scuppers, DS-11	Each		2	

Bars indicated thus 1 x 3 - #5 etc. indicates 1 line of bars with 3 lengths per line.

SUPERSTRUCTURE DETAILS
US 51 / RICHLAND CREEK
F.A.P. RT. 322
FAYETTE COUNTY
SN. 026-0104

BENTON & ASSOCIATES, INC.

DESIGNED MBH
CHECKED NRF
DRAWN JLL
CHECKED NRF

S-I-D

11-1-06