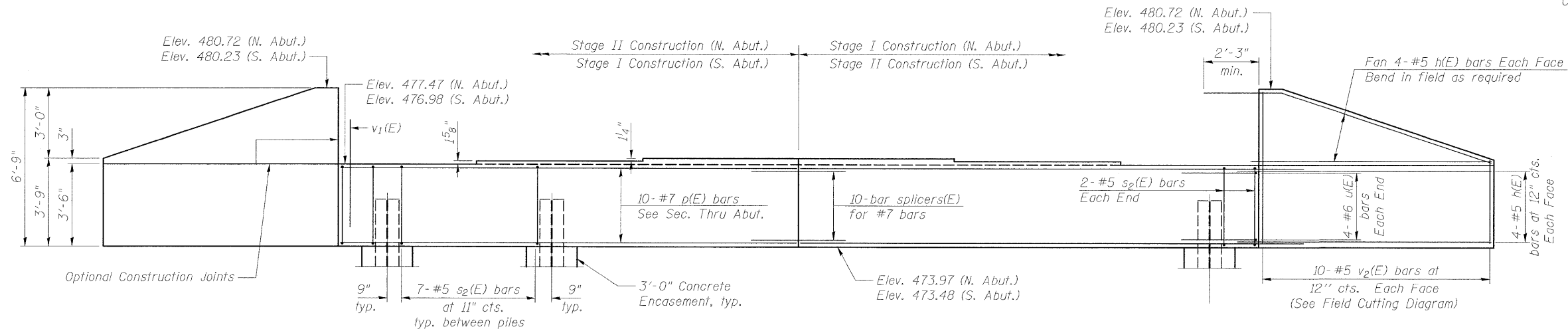


STATE OF ILLINOIS
DEPARTMENT OF TRANSPORTATION

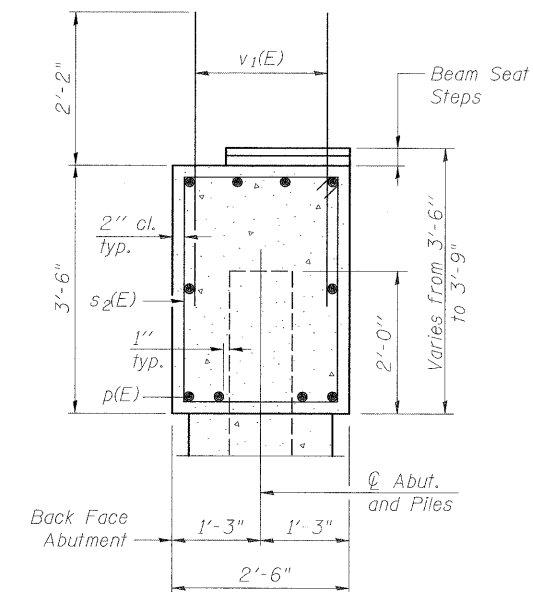
ROUTE NO.	SECTION	COUNTY	TOTAL SHEETS	SHEET NO.	SHEET NO. 16 22 SHEETS
FAP 322	248R-1	FAYETTE	57	36	
FED. ROAD DIST. NO. 7		ILLINOIS	FED. AID PROJECT		

Contract # 94770



ELEVATION

(Looking North - N. Abut.)
(Looking South - S. Abut.)

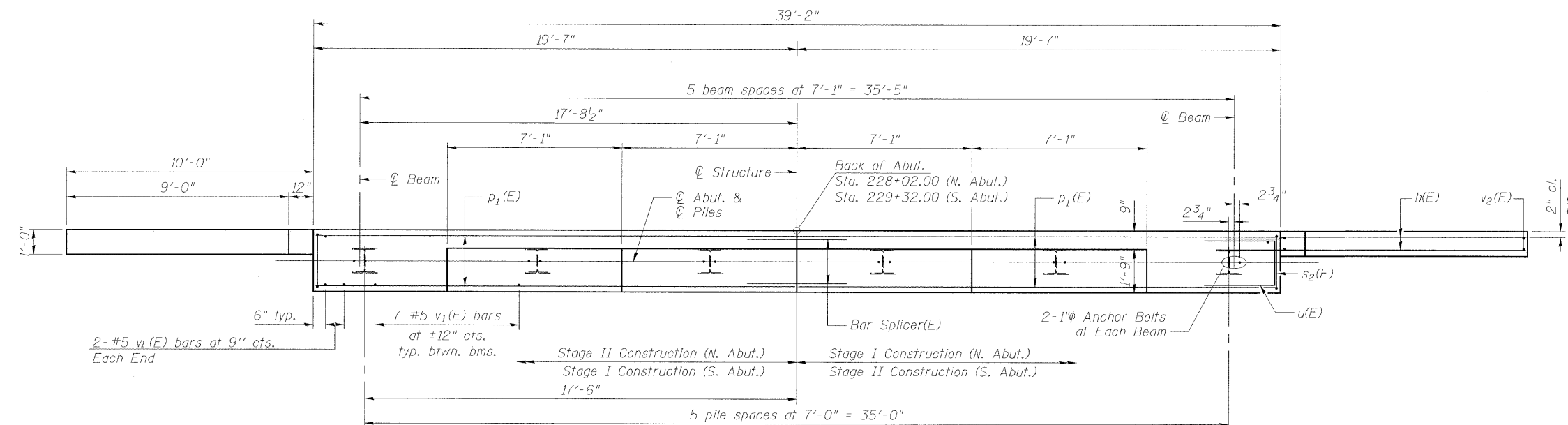


SEC. THRU ABUT.

BILL OF MATERIAL

(2 Abutments)

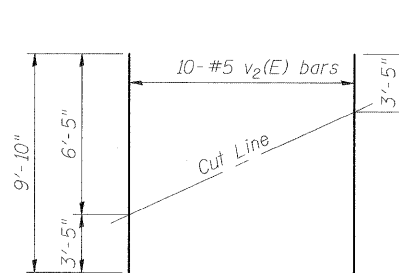
Bar	No.	Size	Length	Shape
h(E)	64	#5	10'-5"	
p(E)	40	#7	19'-5"	
s ₂ (E)	78	#5	11'-7"	□
u(E)	16	#6	7'-5"	□
v ₁ (E)	156	#5	4'-4"	
v ₂ (E)	80	#5	9'-10"	
Structure Excavation		Cu. Yd.	84	
Concrete Structures		Cu. Yd.	34.1	
Reinforcement Bars, Epoxy Coated		Pound	4930	
Furnishing Steel Piles, HP 12x53		Foot	272.5	
Driving Piles		Foot	272.5	
Test Pile Steel HP 12x53		Each	2	
Pipe Underdrains for Structures, 4"		Foot	127	
Porous Granular Embankment (Special)		Cu. Yd.	128	
Pipe Drains, 4"		Foot	40	
Pile Shoes		Each	12	
Concrete Encasement		Cu. Yd.	4.2	
Geocomposite Wall Drain		Sq. Yd.	79	



PLAN

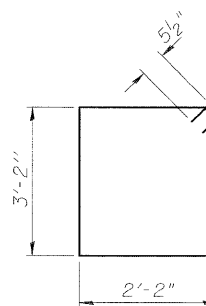
PILE DATA

	N. Abut.	S. Abut.
Type:	HP12x53	HP12x53
Nominal Required Bearing:	258 kip	258 kip
Allowable Resistance Available:	86 kip	86 kip
Est. Length:	26'-0"	28'-6"
No. Production Piles:	5	5
No. Test Piles:	1	1

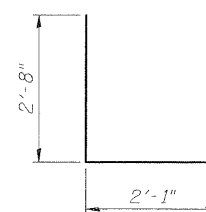


FIELD CUTTING DIAGRAM

Order v₂(E) full length. Cut as shown and use remainder of bars in opposite face.



BAR s₂(E)



BAR u(E)

Notes:

1. Pour steps monolithically with cap.
2. See sheet 12 of 22 for backfill required for abutment construction.
3. For pile details and concrete encasement details see sheet 18 of 22.
4. Space reinforcement in cap to miss anchor bolts.
5. For details of Bar Splicers, see sheet 19 of 22.

BENTON & ASSOCIATES, INC.

DESIGNED MBH
CHECKED NRF
DRAWN MBH
CHECKED NRF

AI-0

11-1-06

ABUTMENTS
US 51 / RICHLAND CREEK
F.A.P. RT. 322
FAYETTE COUNTY
SN. 026-0104