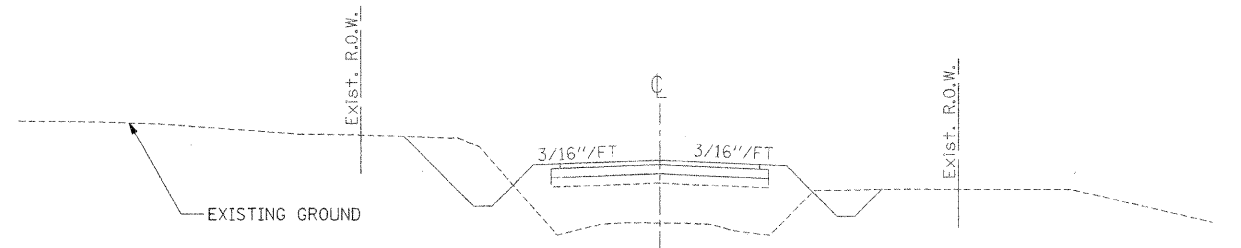
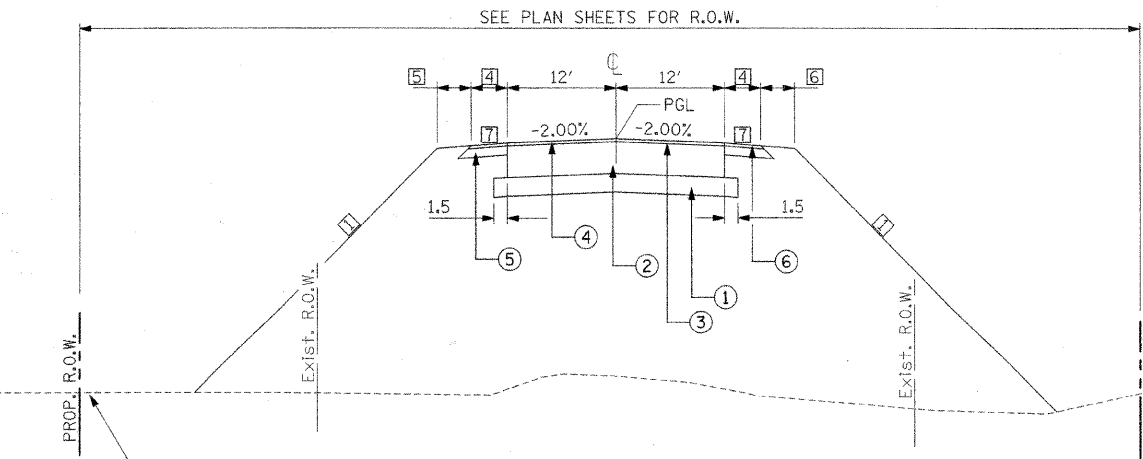


F.A.S. 662  
BEGINNING OF PROJECT STA. 436+50.00 TO STA. 450+00.00  
STA. 479+00.00 TO STA. 495+32.72

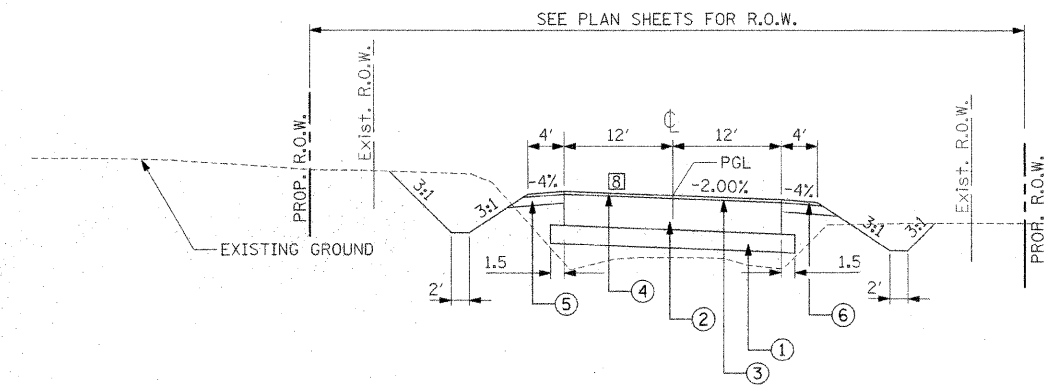


F.A.S. 662  
EXISTING SECTION

- ITEM
- ① PROCESSING LIME STABILIZED SOIL MIXTURE, 12"
  - ② AGGREGATE BASE COURSE, TYPE B 18"
  - ③ SURFACE TREATMENT (CLASS A-3) - CUMBERLAND COUNTY
  - ④ 2" SURFACE - CUMBERLAND COUNTY
  - ⑤ AGGREGATE SHOULDERS TYPE B, 6"
  - ⑥ 2" SHOULDERS - CUMBERLAND COUNTY



F.A.S. 662  
STA. 450+00.00 TO STA. 479+00.00  
(BRIDGE OMISSION STA. 468+21.00 TO STA. 473+29.00)  
(BRIDGE OMISSION STA. 476+69.50 TO STA. 478+54.50)



F.A.S. 662  
STA. 495+32.72 TO STA. 498+23.44

- ① STATION 436+50.00 TO STATION 462+00.00 = 3:1  
STATION 462+00.00 TO STATION 463+00.00  
TRANSITION 3:1 TO 2:1  
STATION 463+00.00 TO STATION 483+00.00 = 2:1  
STATION 483+00.00 TO STATION 484+00.00  
TRANSITION 2:1 TO 3:1  
STATION 484+00.00 TO STATION 495+32.72 = 3:1
- ② STATION 436+50.00 TO STATION 439+00.00 = 2:1  
STATION 439+00.00 TO STATION 440+00.00  
TRANSITION 2:1 TO 3:1  
STATION 440+00.00 TO STATION 450+00.00 = 3:1  
STATION 479+00.00 TO STATION 495+32.72 = 3:1
- ③ STATION 436+50.00 TO STATION 437+00.00  
TRANSITION 10.00' TO 12.00'  
STATION 437+00.00 TO STATION 450+00.00 = 12.00'  
STATION 479+00.00 TO STATION 495+32.72 = 12.00'
- ④ STATION 450+00.00 TO STATION 467+80.00 = 4.00'  
STATION 467+80.00 TO STATION 468+05.00  
TRANSITION 4.00' TO 3.00'  
STATION 468+05.00 TO STATION 468+21.00 = 3.00'  
STATION 473+29.00 TO STATION 473+45.00 = 3.00'  
STATION 473+45.00 TO STATION 473+70.00  
TRANSITION 3.00' TO 4.00'  
STATION 473+70.00 TO STATION 476+30.00 = 4.00'  
STATION 476+30.00 TO STATION 476+55.00  
TRANSITION 4.00' TO 3.00'  
STATION 476+55.00 TO STATION 476+69.50 = 3.00'  
STATION 478+54.50 TO STATION 478+65.00 = 3.00'  
STATION 478+65.00 TO STATION 478+90.00  
TRANSITION 3.00' TO 4.00'  
STATION 478+90.00 TO STATION 479+00.00 = 4.00'
- ⑤ STATION 436+50.00 TO STATION 463+87.50 = 0.00'  
STATION 463+87.50 TO STATION 485+50.00 = 3.76'  
STATION 485+50.00 TO STATION 495+32.72 = 0.00'
- ⑥ STATION 436+50.00 TO STATION 462+50.00 = 0.00'  
STATION 462+50.00 TO STATION 484+12.00 = 3.76'  
STATION 484+12.50 TO STATION 495+32.72 = 0.00'
- ⑦ STATION 450+00.00 TO STATION 467+55.00 = -4.00%  
STATION 467+55.00 TO STATION 468+05.00  
TRANSITION -4.00% TO -2.00%  
STATION 468+05.00 TO STATION 468+21.00 = -2.00%  
STATION 473+29.00 TO STATION 473+45.00 = -2.00%  
STATION 473+45.00 TO STATION 473+95.00  
TRANSITION -2.00% TO -4.00%  
STATION 473+95.00 TO STATION 476+05.00 = -4.00%  
STATION 476+05.00 TO STATION 476+55.00  
TRANSITION -4.00% TO -2.00%  
STATION 476+55.00 TO STATION 476+69.50 = -2.00%  
STATION 478+54.50 TO STATION 478+65.00 = -2.00%  
STATION 478+65.00 TO STATION 479+15.00  
TRANSITION -2.00% TO -4.00%  
STATION 479+15.00 TO STATION 479+00.00 = -4.00%
- ⑧ STATION 495+32.72 TO STATION 496+57.72  
TRANSITION -2.00% TO 2.00%  
STATION 496+57.72 TO STATION 498+23.44 = 2.00%
- ⑨ STATION 436+50.00 TO STATION 450+00.00 = 2.00'  
STATION 479+00.00 TO STATION 486+00.00 = 4.00'  
STATION 486+00.00 TO STATION 487+00.00  
TRANSITION 4.00' TO 2.00'  
STATION 487+00.00 TO STATION 495+32.72 = 2.00'

© Copyright Hanson Professional Services Inc. 2008  
**HANSON**  
Hanson Professional Services Inc.

LAYOUT	MNM/DJP	10/10/07
DRAWN	DJP	10/10/07
REVISED	JMM	02/04/08

FILE NAME =	USER NAME = Pop00275	DESIGNED -- MNM/DJP	REVISED --
It:\01\jobs\01s22210\CADD\Road\Sheet\6-502.dgn		DRAWN -- DJP	REVISED --
PLOT SCALE = 10.00000 ' / IN.		CHECKED -- MNM	REVISED --
PLOT DATE = 04/04/2008, 12:15 PM		DATE -- 10/10/07	REVISED --

STATE OF ILLINOIS  
DEPARTMENT OF TRANSPORTATION

SCALE: SHEET NO. 1 OF 1 SHEETS STA. 436+50.00 TO STA. 500+00.00

TYPICAL SECTION

F.A.S. RTE.	SECTION	COUNTY	TOTAL SHEETS	SHEET NO.
662	01-00061-00-BR	CUMBERLAND	85	6
CONTRACT NO. 95552				
FED. ROAD DIST. NO. ILLINOIS FED. AID PROJECT				