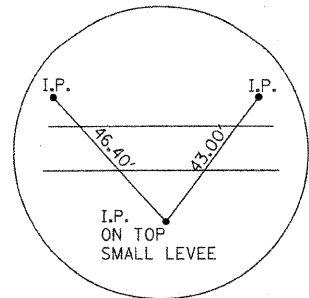
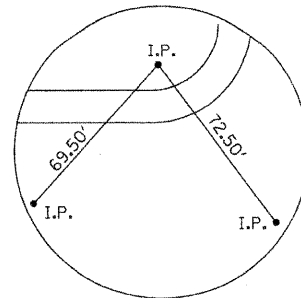


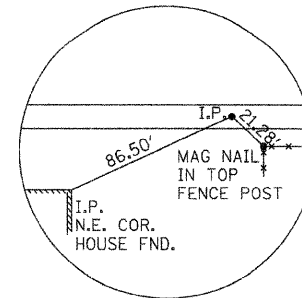
NOT TO SCALE



CP #1
N - 24,946.24
E - 34,633.58



CP #2
N - 24,987.32
E - 35,155.85

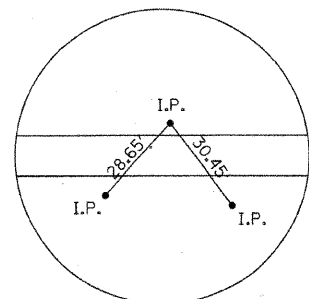


CP #3
N - 24,961.03
E - 32,834.71

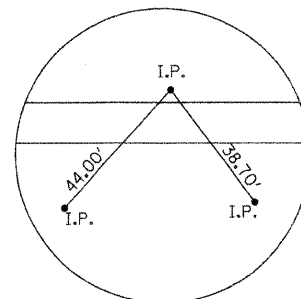
BENCHMARKS

0.1 MILES SOUTH OF THE CENTER OF THE S.E. 1/4 SECTION 26,
110.00' SOUTH OF JUNCTION OF T-ROAD EAST, ON TOP OF
NORTH END HEADWALL OF CONCRETE CULVERT UNDER ROAD
SOUTH. CHISLED SQUARE ELEVATION = 618.00

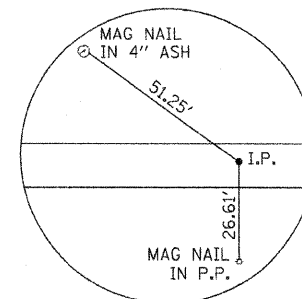
CP #6 N - 24,957.90 E - 31,297.53 ELEVATION = 571.96



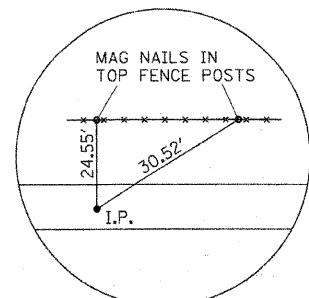
CP #4
N - 24,955.12
E - 36,100.77



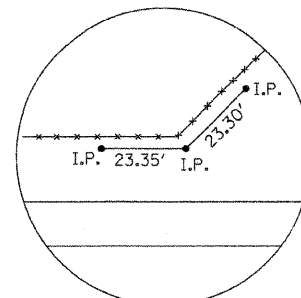
CP #5
N - 24,990.00
E - 36,699.24



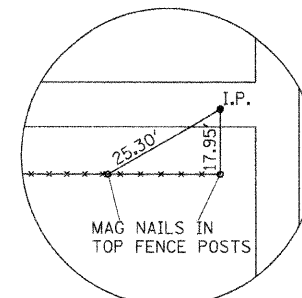
CP #6
N - 24,957.90
E - 31,297.53
BENCHMARK



CP #7
N - 24,971.14
E - 37,158.54



CP #8
N - 25,010.75
E - 37,586.31



CP #9
N - 24,996.45
E - 37,705.30

© Copyright Hanson Professional Services Inc. 2008
HANSON
 Hanson Professional Services Inc.

LAYOUT	MNM/DJP	10/10/07
DRAWN	DJP	10/10/07
REVIEWED	JMW	02/04/08

FILE NAME = I:\21\jobs\01\2021B\CADD\Road\Sheet\10-103\geom.dgn	USER NAME = Pop00275	DESIGNED - MNM/DJP	REVISED -
PLOT SCALE = 100.0000 "/>			
PLOT DATE = 04/04/2008, 12:47 PM	DATE - 10/10/07	CHECKED - MNM	REVISED -

**STATE OF ILLINOIS
DEPARTMENT OF TRANSPORTATION**

SURVEY TIES / BENCHMARKS

SCALE: SHEET NO. 1 OF 1 SHEETS

F.A.S. RTE.	SECTION	COUNTY	TOTAL SHEETS	SHEET NO.
662	01-00061-00-BR	CUMBERLAND	85	10
CONTRACT NO. 95552				
FED. ROAD DIST. NO. ILLINOIS FED. AID PROJECT				