



Illinois Department of Transportation
Division of Highways
Illinois Department of Transportation

SOIL BORING LOG

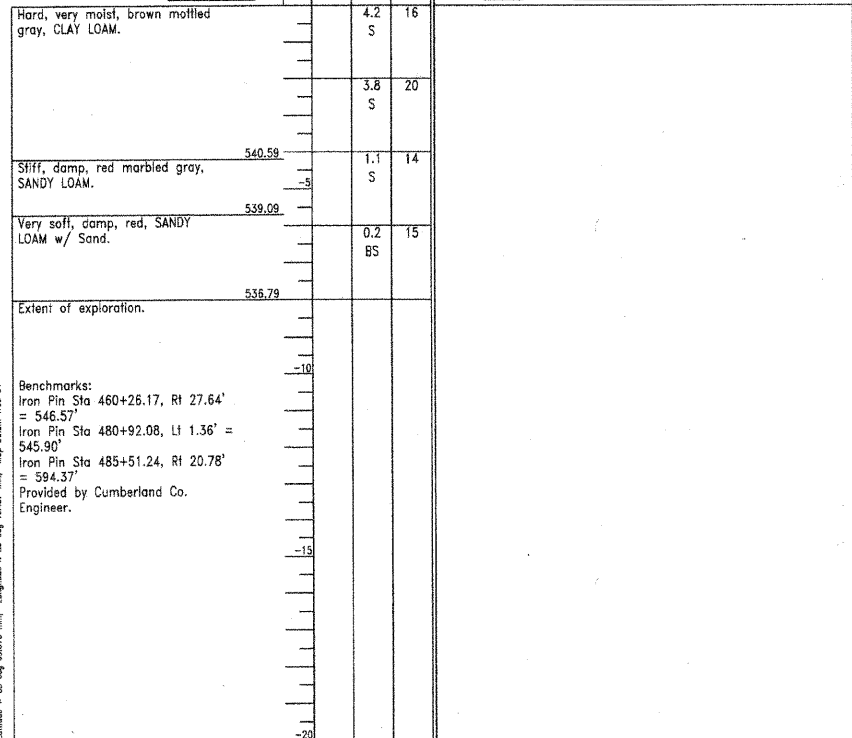
Date 9/19/07

ROUTE FAS 662 (TR 61) DESCRIPTION Line Borings: TR 61 Extension LOGGED BY E. Sandschafer

SECTION 01-00061-00-BR LOCATION W 1/2, SEC. 12, TWP. 10 N, RNG. 9 E, 3 PM

COUNTY Cumberland DRILLING METHOD Hydraulic pushed HAMMER TYPE N/A

STRUCT. NO. gINT File	D	B	U	M	Surface Water Elev.	N/A	ft
Station 018-TR 61 Embarras	E	L	C	O	Stream Bed Elev.	N/A	ft
	P	O	S	I			
	T	W	S	S	Groundwater Elev.:		
BORING NO. LB 4	H	S	Qu	T	First Encounter	Dry	ft
Station 461+00					Upon Completion	Dry	ft
Offset 13.00ft Rt					After		Hrs.
Ground Surface Elev. 544.79	ft	(ft)	(/6")	(tsf)	(%)		



The Unconfined Compressive Strength (UCS) Failure Mode is indicated by (B-Bulge, S-Shear, P-Penetrometer)
The SPT (N value) is the sum of the last two blow values in each sampling zone (AASHTO T206)
BBS, from 137 (Rev. 8-99)



Illinois Department of Transportation
Division of Highways
Illinois Department of Transportation

SOIL BORING LOG

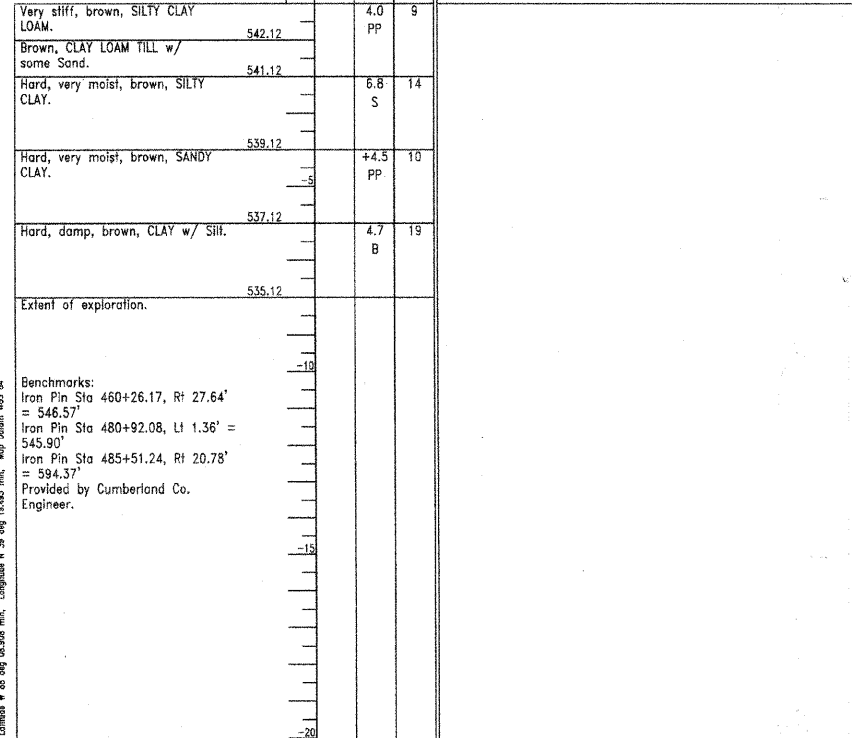
Date 9/19/07

ROUTE FAS 662 (TR 61) DESCRIPTION Line Borings: TR 61 Extension LOGGED BY E. Sandschafer

SECTION 01-00061-00-BR LOCATION W 1/2, SEC. 12, TWP. 10 N, RNG. 9 E, 3 PM

COUNTY Cumberland DRILLING METHOD Hydraulic pushed HAMMER TYPE N/A

STRUCT. NO. gINT File	D	B	U	M	Surface Water Elev.	N/A	ft
Station 018-TR 61 Embarras	E	L	C	O	Stream Bed Elev.	N/A	ft
	P	O	S	I			
	T	W	S	S	Groundwater Elev.:		
BORING NO. LB 5	H	S	Qu	T	First Encounter	Dry	ft
Station 466+00					Upon Completion	Dry	ft
Offset 6.00ft Lt					After		Hrs.
Ground Surface Elev. 543.12	ft	(ft)	(/6")	(tsf)	(%)		



The Unconfined Compressive Strength (UCS) Failure Mode is indicated by (B-Bulge, S-Shear, P-Penetrometer)
The SPT (N value) is the sum of the last two blow values in each sampling zone (AASHTO T206)
BBS, from 137 (Rev. 8-99)



Illinois Department of Transportation
Division of Highways
Illinois Department of Transportation

SOIL BORING LOG

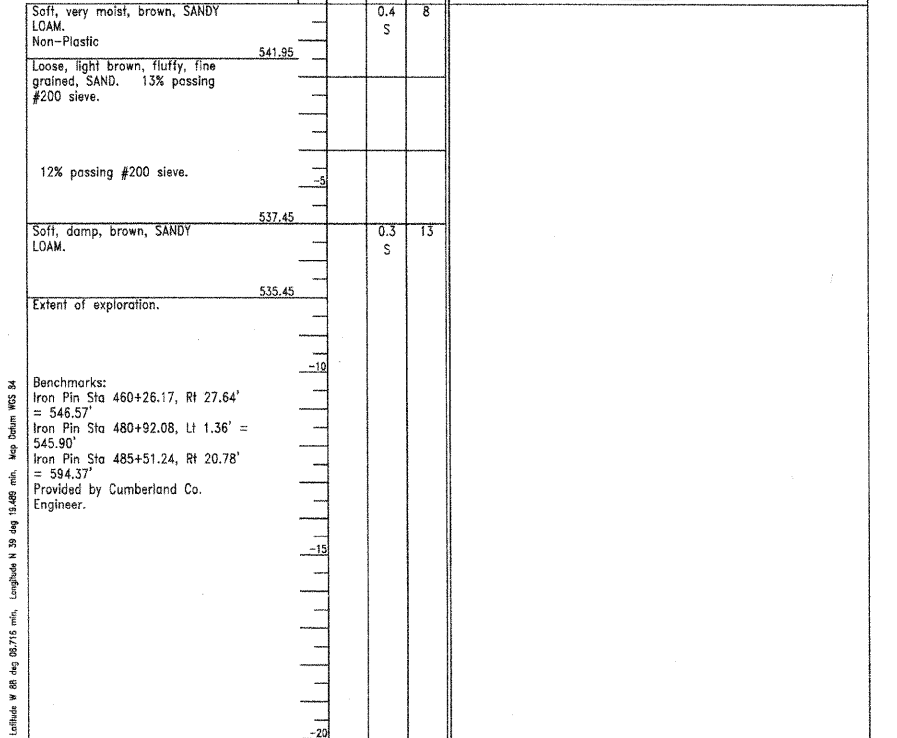
Date 9/18/07

ROUTE FAS 662 (TR 61) DESCRIPTION Line Borings: TR 61 Extension LOGGED BY E. Sandschafer

SECTION 01-00061-00-BR LOCATION W 1/2, SEC. 12, TWP. 10 N, RNG. 9 E, 3 PM

COUNTY Cumberland DRILLING METHOD Hydraulic pushed HAMMER TYPE N/A

STRUCT. NO. gINT File	D	B	U	M	Surface Water Elev.	N/A	ft
Station 018-TR 61 Embarras	E	L	C	O	Stream Bed Elev.	N/A	ft
	P	O	S	I			
	T	W	S	S	Groundwater Elev.:		
BORING NO. LB 6	H	S	Qu	T	First Encounter	Dry	ft
Station 475+00					Upon Completion	Dry	ft
Offset 0.00ft Cl					After		Hrs.
Ground Surface Elev. 543.45	ft	(ft)	(/6")	(tsf)	(%)		



The Unconfined Compressive Strength (UCS) Failure Mode is indicated by (B-Bulge, S-Shear, P-Penetrometer)
The SPT (N value) is the sum of the last two blow values in each sampling zone (AASHTO T206)
BBS, from 137 (Rev. 8-99)

© Copyright Hanson Professional Services Inc. 2008
HANSON
Hanson Professional Services Inc.

LAYOUT	MNM/DJP	10/10/07
DRAWN	DJP	10/10/07
REVIEWED	JNM	10/09/08

FILE NAME =	USER NAME = Pop02275	DESIGNED - MNM/DJP	REVISED -
t:\21\jobs\01s20218\CADD\Road\Sheet\C-SL01.dgn		DRAWN - DJP	REVISED -
		CHECKED - MNM	REVISED -
		DATE - 10/10/07	REVISED -

STATE OF ILLINOIS
DEPARTMENT OF TRANSPORTATION

ROADWAY BORING SHEET
SCALE: SHEET NO. 2 OF 4 SHEETS STA. TO STA.

F.A.S. RTE.	SECTION	COUNTY	TOTAL SHEETS	SHEET NO.
662	00-00061-00-BR	CUMBERLAND	85	28
CONTRACT NO. 95552				
FED. ROAD DIST. NO. ILLINOIS FED. AID PROJECT				