

ROUTE NO.	SECTION	COUNTY	TOTAL SHEETS	SHEET NO.
FAS 662 (TR 6D)	*	CUMBERLAND	85	37
FED. ROAD DIST. NO. 7		ILLINOIS	FED. AID PROJECT	

SHEET NO. 7
26 SHEETS

*Section 01-00061-00-BR Contract #95552

NORTH SHOULDER LINE

Location	Station	Offset	Theoretical Grade Elevations
West End E. Appr. Pav't.	473+14.00	-15.00'	554.70
Bk. E. Abut.	473+14.71	-15.00'	554.70
A	473+24.00	-15.00'	554.70
B	473+34.00	-15.00'	554.70
East End E. Appr. Pav't.	473+44.00	-15.00'	554.70

NORTH EDGE OF PAVEMENT

Location	Station	Offset	Theoretical Grade Elevations
West End E. Appr. Pav't.	473+11.00	-12.00'	554.76
Bk. E. Abut.	473+11.71	-12.00'	554.76
A	473+21.00	-12.00'	554.76
B	473+31.00	-12.00'	554.76
East End E. Appr. Pav't.	473+41.00	-12.00'	554.76

ROADWAY & PROFILE GRADE LINE

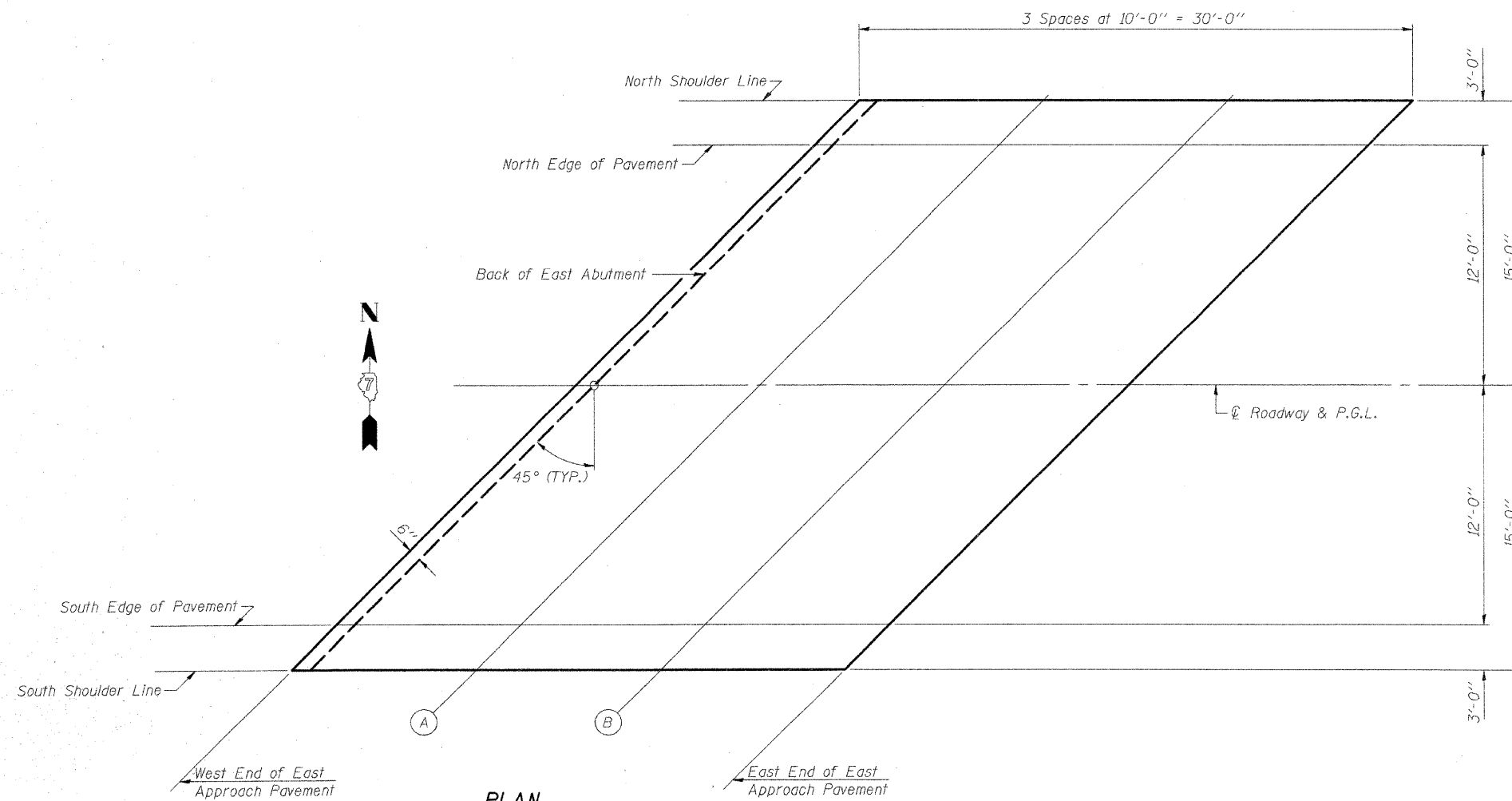
Location	Station	Offset	Theoretical Grade Elevations
West End E. Appr. Pav't.	472+99.00	0.00'	555.00
Bk. E. Abut.	472+99.71	0.00'	555.00
A	473+09.00	0.00'	555.00
B	473+19.00	0.00'	555.00
East End E. Appr. Pav't.	473+29.00	0.00'	555.00

SOUTH EDGE OF PAVEMENT

Location	Station	Offset	Theoretical Grade Elevations
West End E. Appr. Pav't.	472+87.00	12.00'	554.76
Bk. E. Abut.	472+87.71	12.00'	554.76
A	472+97.00	12.00'	554.76
B	473+07.00	12.00'	554.76
East End E. Appr. Pav't.	473+17.00	12.00'	554.76

SOUTH SHOULDER LINE

Location	Station	Offset	Theoretical Grade Elevations
West End E. Appr. Pav't.	472+84.00	15.00'	554.70
Bk. E. Abut.	472+84.71	15.00'	554.70
A	472+94.00	15.00'	554.70
B	473+04.00	15.00'	554.70
East End E. Appr. Pav't.	473+14.00	15.00'	554.70



PLAN

TOP OF EAST APPROACH SLAB ELEVATIONS
 F.A.S. 662 (TR 6D) OVER EMBARRAS RIVER
 CUMBERLAND COUNTY
 SECTION 01-00061-00-BR
 STA. 470+75.00
 STRUCTURE NUMBER 018-3191
 PROFESSIONAL DESIGN FIRM LICENSE #184-001084

© Copyright Hanson Professional Services Inc. 2008



JOB NO.
01S2021B

DATE
02/04/08

04/01/2008 03:06 PM
A:\Users\032021B\cad\Struct\Sheet\River_Bridge_Plans.dgn

LAYOUT	MM	11/20/07
DRAWN	DAF	12/28/07
REVIEWED	JMM	02/04/08