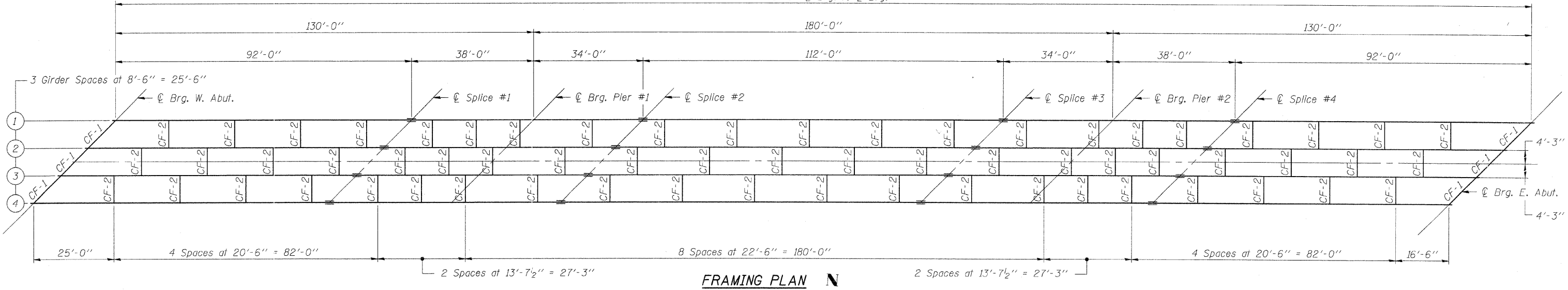


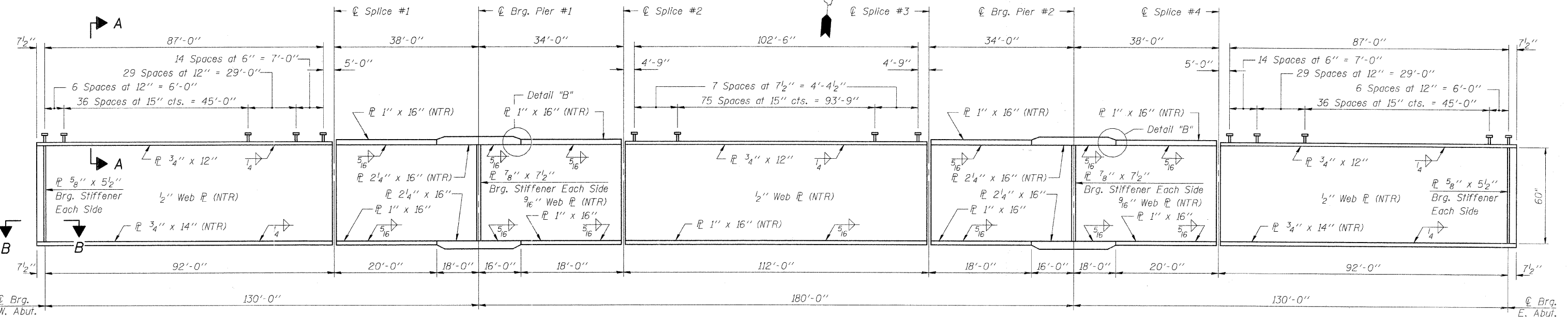
ROUTE NO.	SECTION	COUNTY	TOTAL SHEETS	SHEET NO.	SHEET NO. 12 26 SHEETS
FAS 662 (TR 6J)	*	CUMBERLAND	85	42	
FED. ROAD DIST. NO. 7	ILLINOIS	FED. AID PROJECT			

\*Section 01-00061-00-BR Contract #95552

440'-0"  $\phi$  Brg. to  $\phi$  Brg.

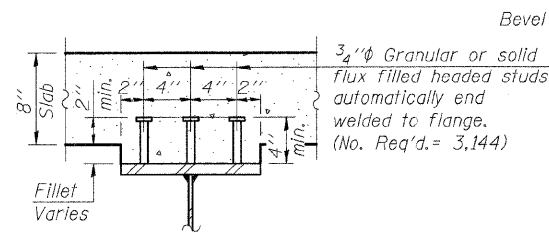


FRAMING PLAN

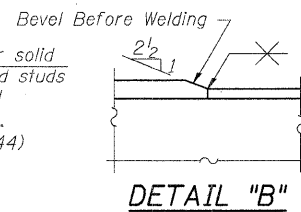


GIRDER ELEVATION

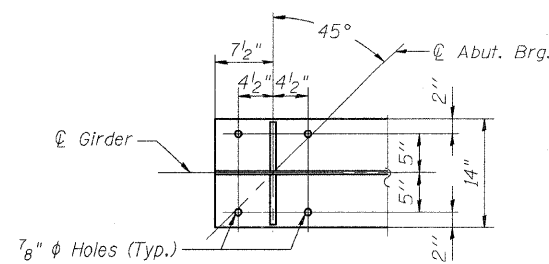
Note:  
All cross frames or diaphragms shall be installed as steel is erected and secured with erection pins and bolts except as otherwise noted. Individual cross frames or diaphragms at supports may be temporarily disconnected to install bearing anchor rods.  
For cross frame details and splice plate details see sheet 13 of 26.  
Load carrying components designated "NTR" shall conform to the Supplemental Requirements for Notch Toughness, Zone 2.



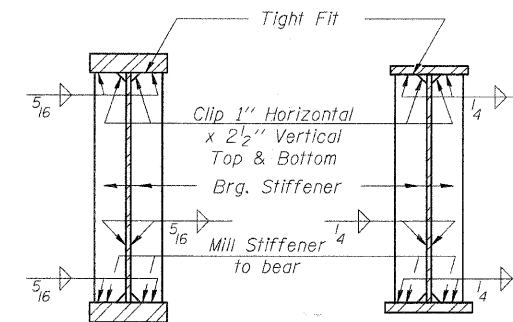
SECTION A-A



DETAIL "B"



SECTION B-B  
(Typ. Each End)



SECTION AT PIER

SECTION AT ABUTMENT

06/02/2008 02:46 PM I:\01\005\018\2018\CAUD\Struct\Sheet\River\_Bridge\_Plans.dgn

MM	11/30/07
MM	12/28/07
MM	02/04/08

**STRUCTURAL STEEL**  
F.A.S. 662 (TR 6J) OVER EMBARRAS RIVER  
CUMBERLAND COUNTY  
SECTION 01-00061-00-BR  
STA. 470+75.00  
STRUCTURE NUMBER 018-3191  
PROFESSIONAL DESIGN FIRM LICENSE #184-001084

© Copyright Hanson Professional Services Inc. 2008

**HANSON**  
Hanson Professional Services Inc.

JOB NO.  
01S2021B

DATE  
05/30/08