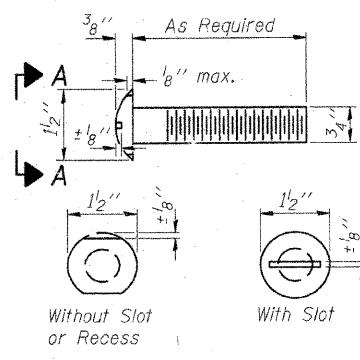
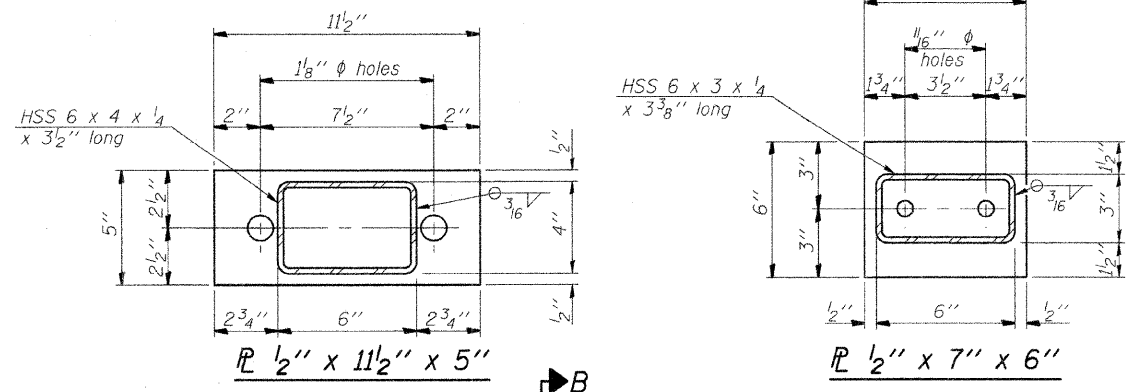


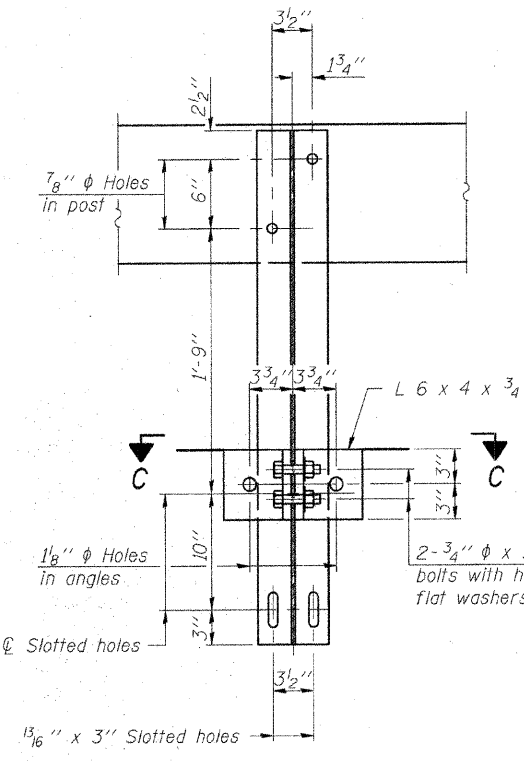
*Section 01-00061-00-BR Contract #95552



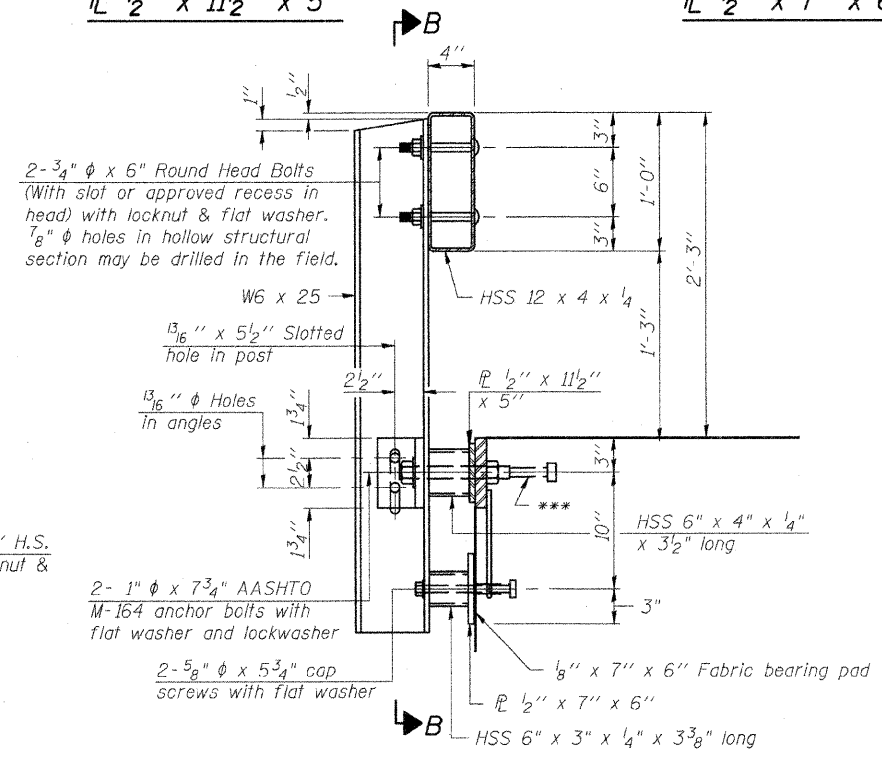
**VIEW A-A
ROUND HEAD BOLT**



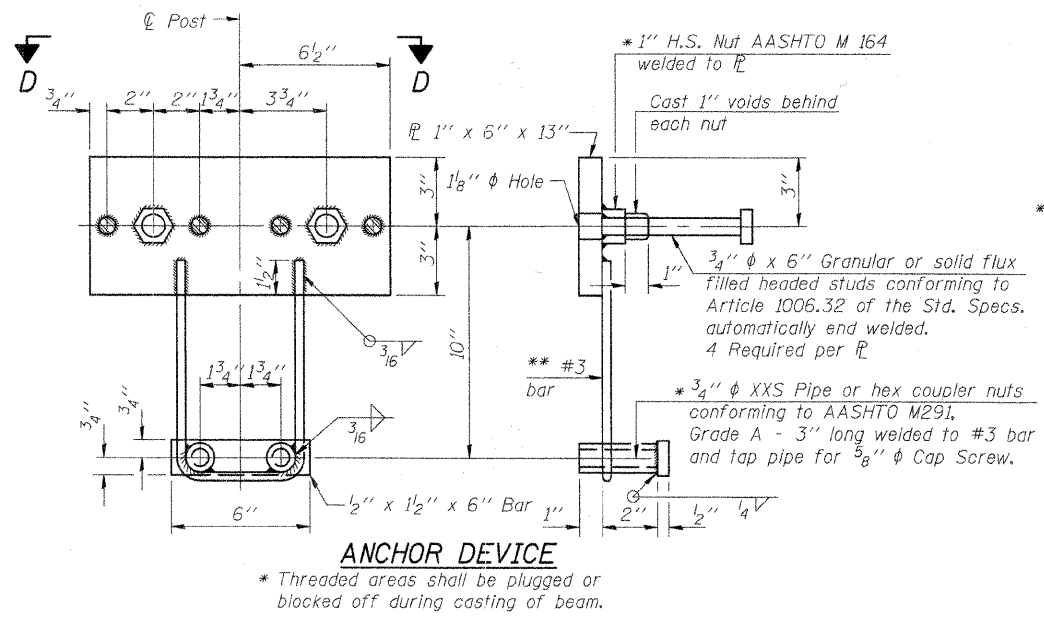
PL 1/2" x 11 1/2" x 5" PL 1/2" x 7" x 6"



SECTION B-B

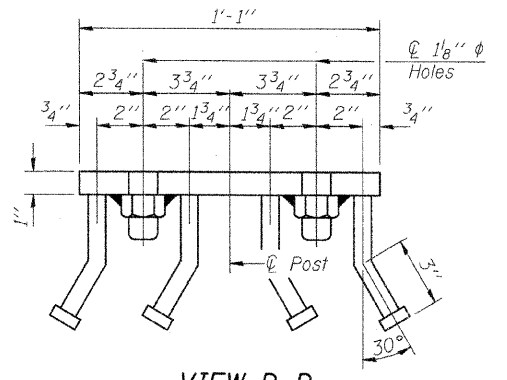


SECTION AT RAILING POST

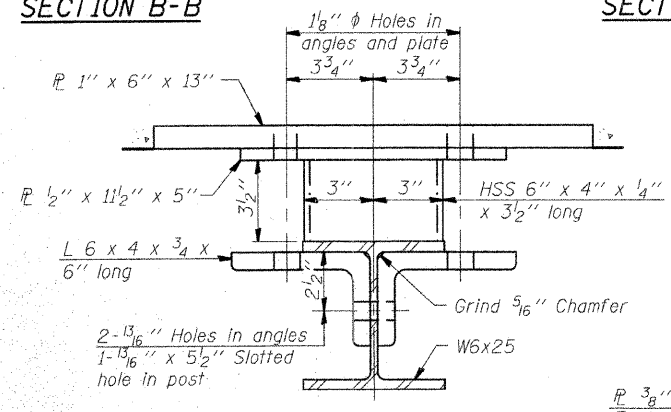


ANCHOR DEVICE

Notes:
 All field drilled holes shall be coated with an approved zinc rich paint before erection.
 For multi-span bridges, sufficient 1/4" x 6" x 1'-2" galvanized steel shims shall be provided to align rail between adjacent spans. Cost included with Steel Railing, Type S-1.
 All steel rail elements shall be galvanized according to Article 509.05 of the Standard Specifications.
 *** The studs of the anchor devices shall be placed below the top reinforcement bars and the outermost longitudinal reinforcement bar shall be placed directly above the studs of the rail post anchor device.

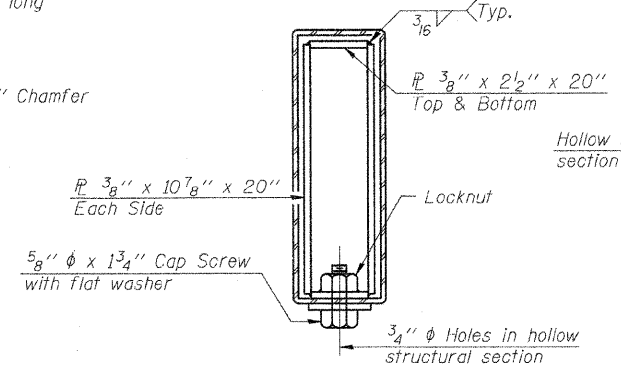


VIEW D-D

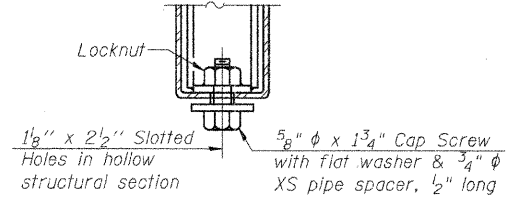


SECTION C-C

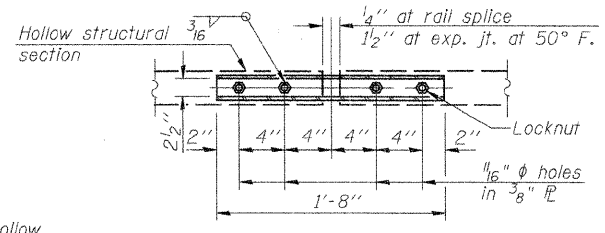
** Whenever the lower insert assemblies interfere with strand locations, the #3 bars shall be cut and adjusted in order to allow raising or lowering of the lower inserts. Maximum adjustment not to exceed 1/2".



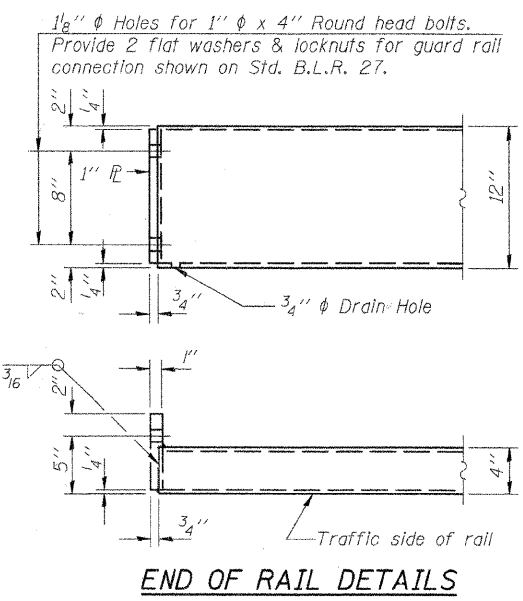
SECTIONS AT RAIL SPLICE



**RAIL SPLICE CONNECTION
AT EXPANSION JT.**



**PLAN-BOTT. SPLICE PL
TYPICAL**



END OF RAIL DETAILS

BILL OF MATERIAL

Item	Unit	Quantity
Steel Railing, Type S-1	Foot	368

STEEL RAILING, TYPE S-1
 F.A.S. 662 (TR 61) EMBARRAS RIVER OVERFLOW STRUCTURE
 CUMBERLAND COUNTY
 SECTION 01-00061-00-BR
 STA. 477+62
 STRUCTURE NUMBER 018-3194
 PROFESSIONAL DESIGN FIRM LICENSE #184-001084

© Copyright Hanson Professional Services Inc. 2008



JOB NO.
01S2021B
DATE
02/04/08

04/01/2008 02:48 PM A:\Jobs\01S2021B\cadd\Struct\Rail\overFlow_2008-01-S-006-Steel Railing.dgn

LAYOUT	MM	11/16/07
DRAWN	MM	07/30/08
REVIEWED	MM	07/30/08