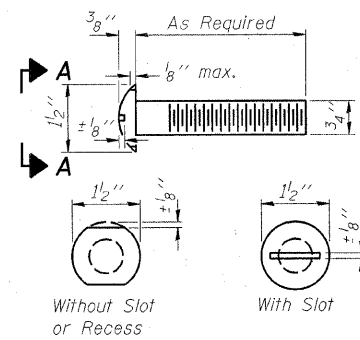
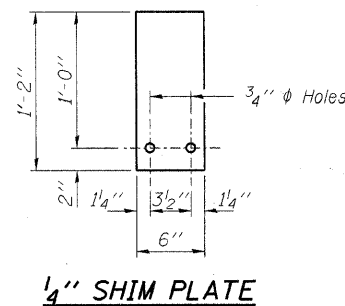
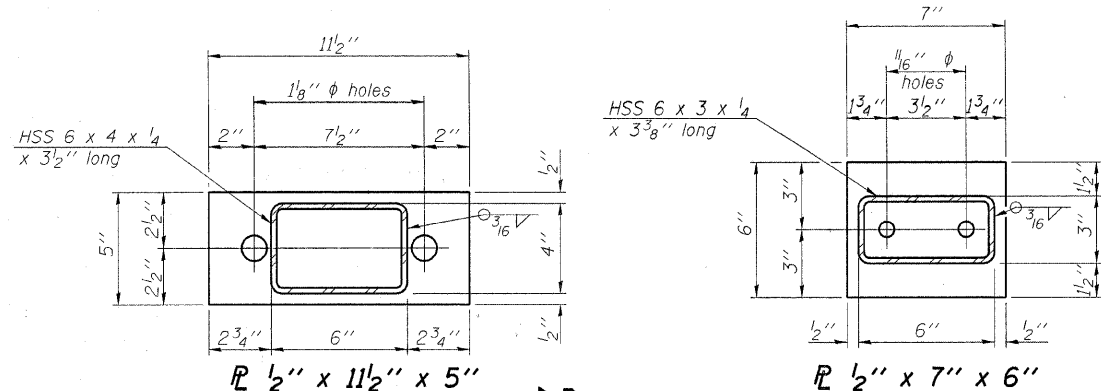


ROUTE NO.	SECTION	COUNTY	TOTAL SHEETS	SHEET NO.
T.R. 249	07-05123-00-BR	LAWRENCE	11	8
FED. ROAD DIST. NO.		ILLINOIS	CONTRACT NO. 95560	

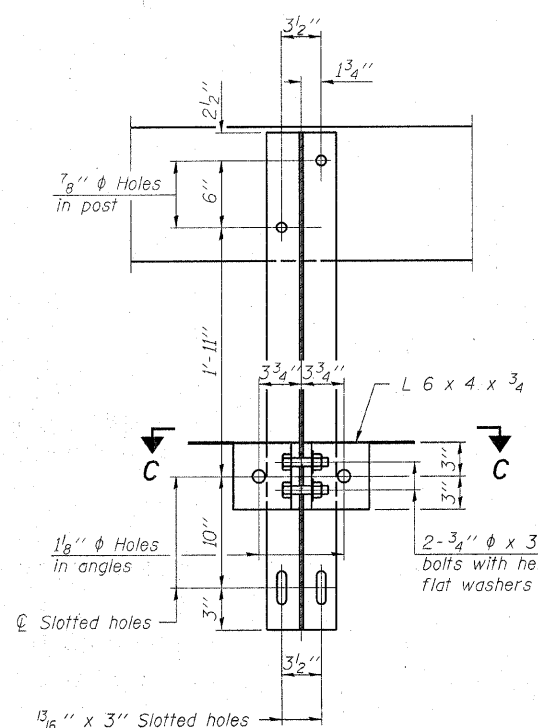
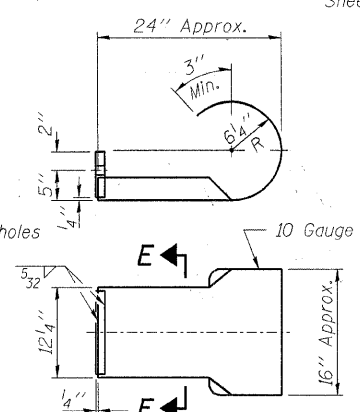
Sheet 5 of 8



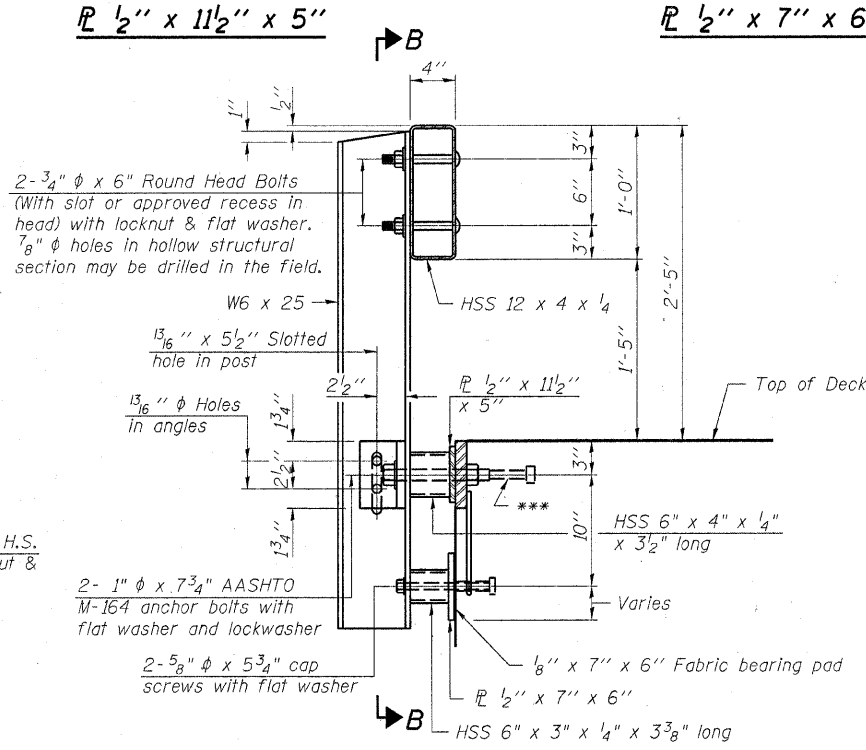
**VIEW A-A
ROUND HEAD BOLT**



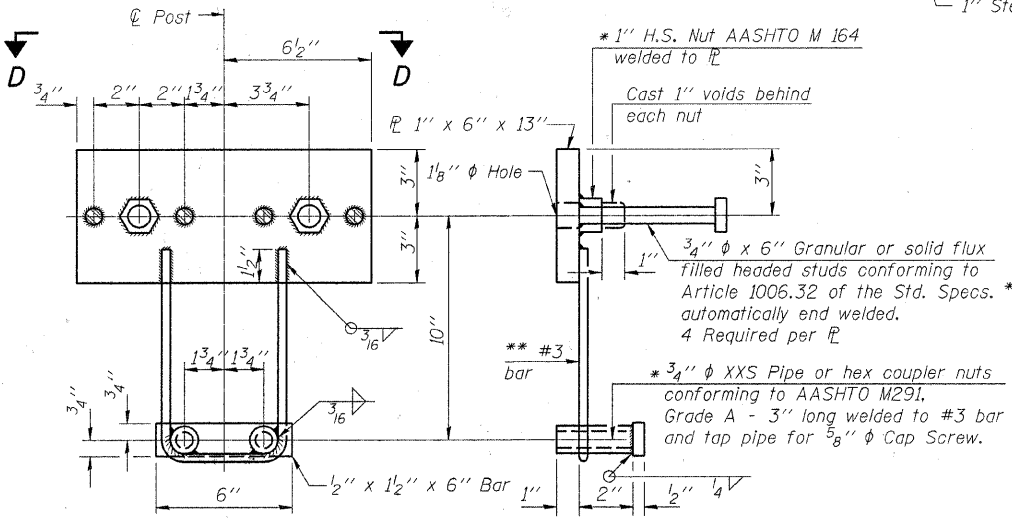
Note: Cost of curled end sections shall be included with the Steel Railing. (4 Required)



SECTION B-B

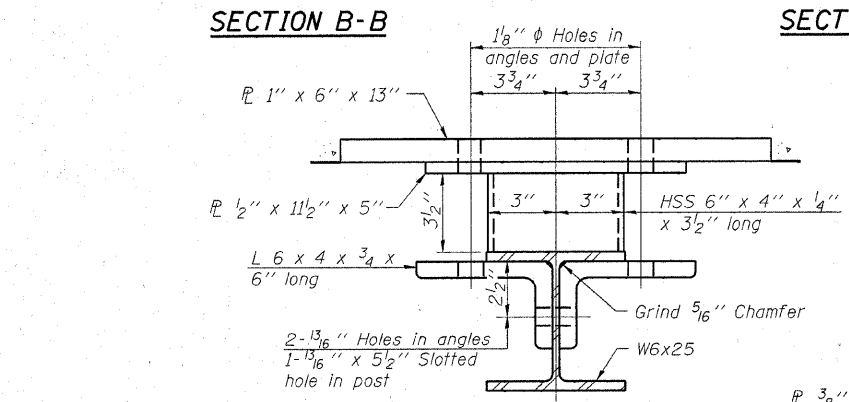


SECTION AT RAILING POST



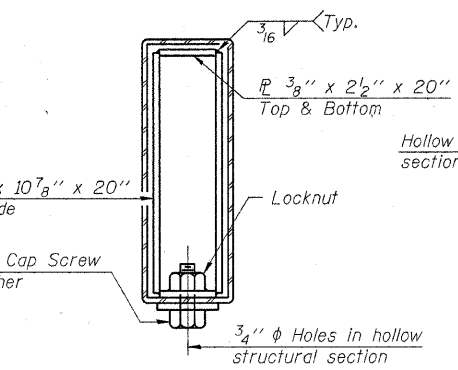
ANCHOR DEVICE

Notes:
All field drilled holes shall be coated with an approved zinc rich paint before erection.
For multi-span bridges, sufficient 1/4 inch x 6 inch x 1-2 inch galvanized steel shims shall be provided to align rail between adjacent spans. Cost included with Steel Railing, Type S-1.
All steel rail elements shall be galvanized according to Article 509.05 of the Standard Specifications.
The studs of the anchor devices shall be placed below the top reinforcement bars and the outermost longitudinal reinforcement bar shall be placed directly above the studs of the rail post anchor device.

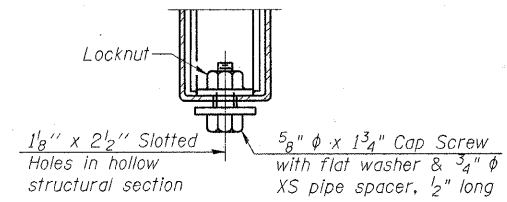


SECTION C-C

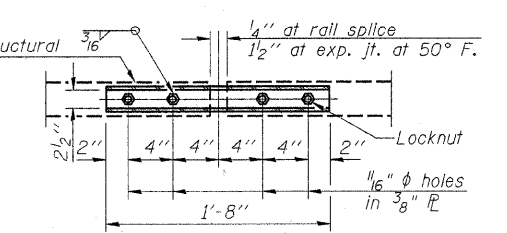
** Whenever the lower insert assemblies interfere with strand locations, the #3 bars shall be cut and adjusted in order to allow raising or lowering of the lower inserts. Maximum adjustment not to exceed 1/2 inch.



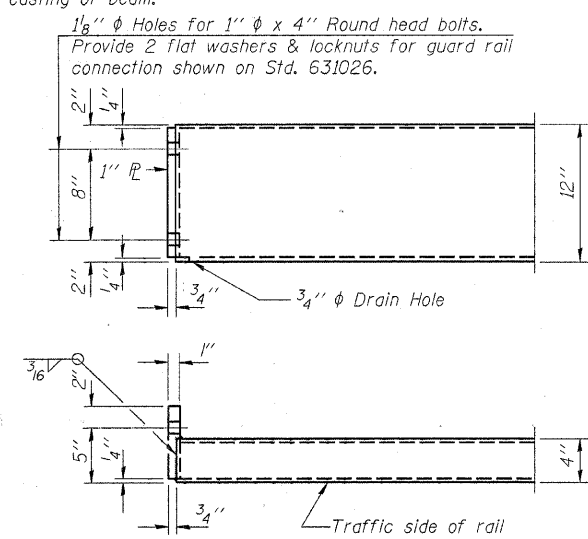
SECTIONS AT RAIL SPLICE



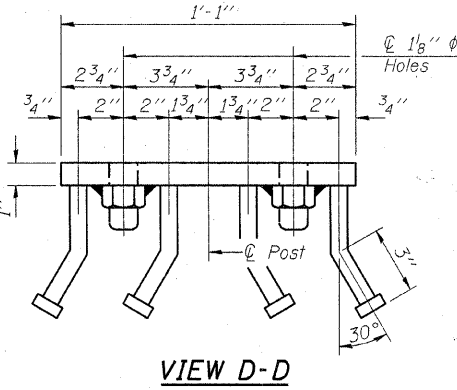
**RAIL SPLICE CONNECTION
AT EXPANSION JT.**



**PLAN-BOTT. SPLICE R
TYPICAL**



END OF RAIL DETAILS



VIEW D-D

BILL OF MATERIAL

Item	Unit	Quantity
Steel Railing, Type S-1	Foot	116

HAMPTON, LENZINI & RENWICK, INC.
CIVIL & STRUCTURAL ENGINEERS
LAND SURVEYORS
3085 STEVENSON DRIVE, SUITE 201
SPRINGFIELD, ILLINOIS 62703
(217) 546-3400

ELGIN • SPRINGFIELD

PROJECT NUMBER: 08.0075.130 DATE: 04/18/08
DESIGNED: S.M.S. CHECKED: S.W.M. DRAWN: D.A.B.

RAILING DETAILS
SECTION 07-05123-00-BR
DENISON ROAD DISTRICT
LAWRENCE COUNTY
STRUCTURE NO. 051-3282 / STATION 4+35