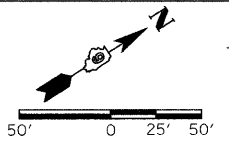


F.A.S. RTE.	SECTION	COUNTY	TOTAL SHEETS	SHEET NO.
932	(8,9,11)W,RS-1	*	401	51
STA.	TO STA.			
FED. ROAD DIST. NO.	ILLINOIS	FED. AID PROJECT		
* JOHNSON & POPE				

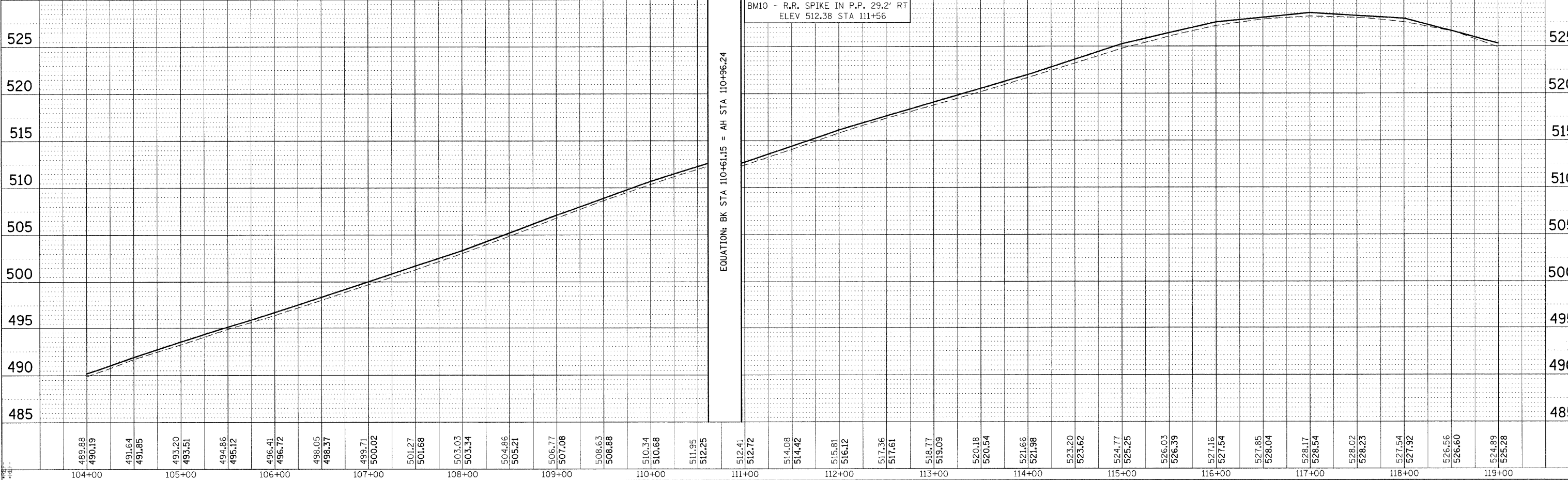
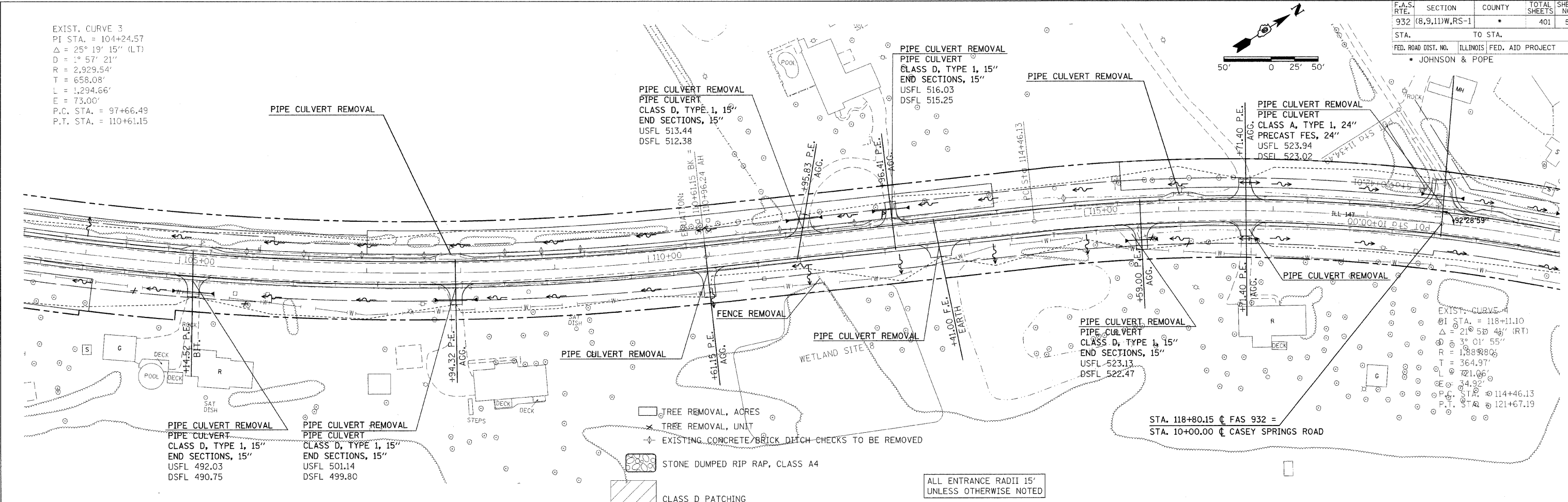
EXIST. CURVE 3
 PI STA. = 104+24.57
 $\Delta = 25^\circ 19' 15''$ (LT)
 $D = 57' 21''$
 $R = 2,929.54'$
 $T = 658.08'$
 $L = 1,294.66'$
 $E = 73.00'$
 P.C. STA. = 97+66.49
 P.T. STA. = 110+61.15



PLAN	SURVEYED	CHECKED	DATE
NOTE BOOK NO.	ALIGNED	NO.	
	FILED		

PROFILE	SURVEYED	CHECKED	DATE
NOTE BOOK NO.	GRADES	NO.	
	NOTED		
	STRUCTURE		
	NOTATIONS		

DATE TIME
 DRAWN SPEC
 REF: 100008
 REF: 100008



PLAN PROFILE SHEET STA 104+00 TO 119+00