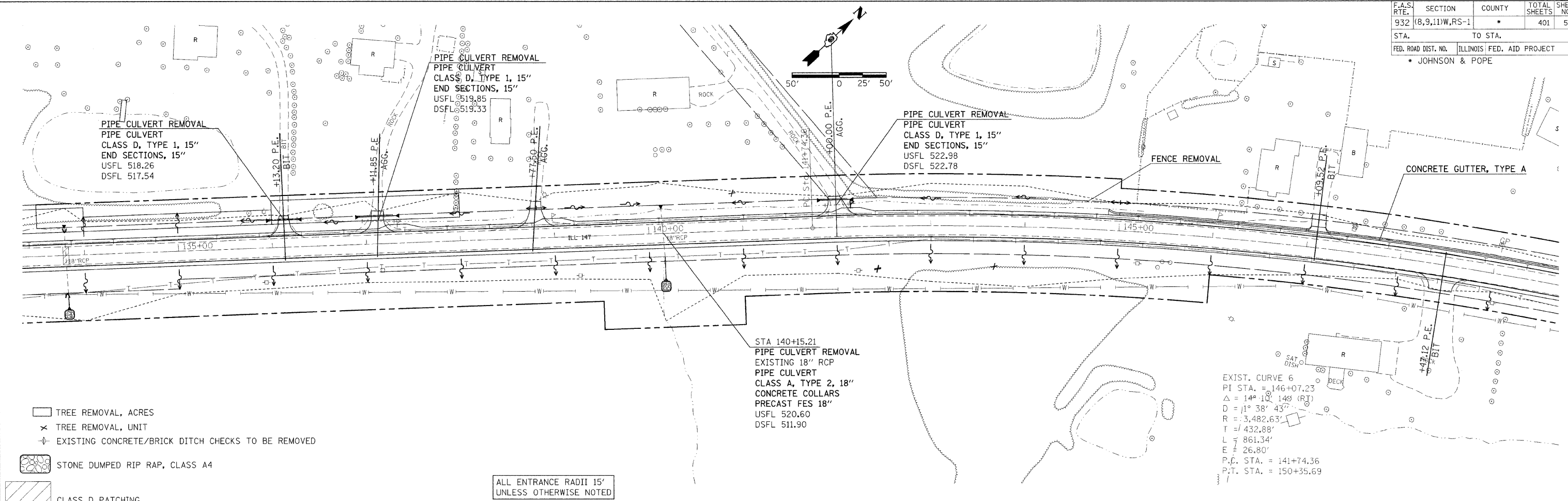


F.A.S. RTE.	SECTION	COUNTY	TOTAL SHEETS	SHEET NO.
932	(8,9,11)WS-1	*	401	53
STA.		TO STA.		
FED. ROAD DIST. NO.		ILLINOIS FED. AID PROJECT		
* JOHNSON & POPE				

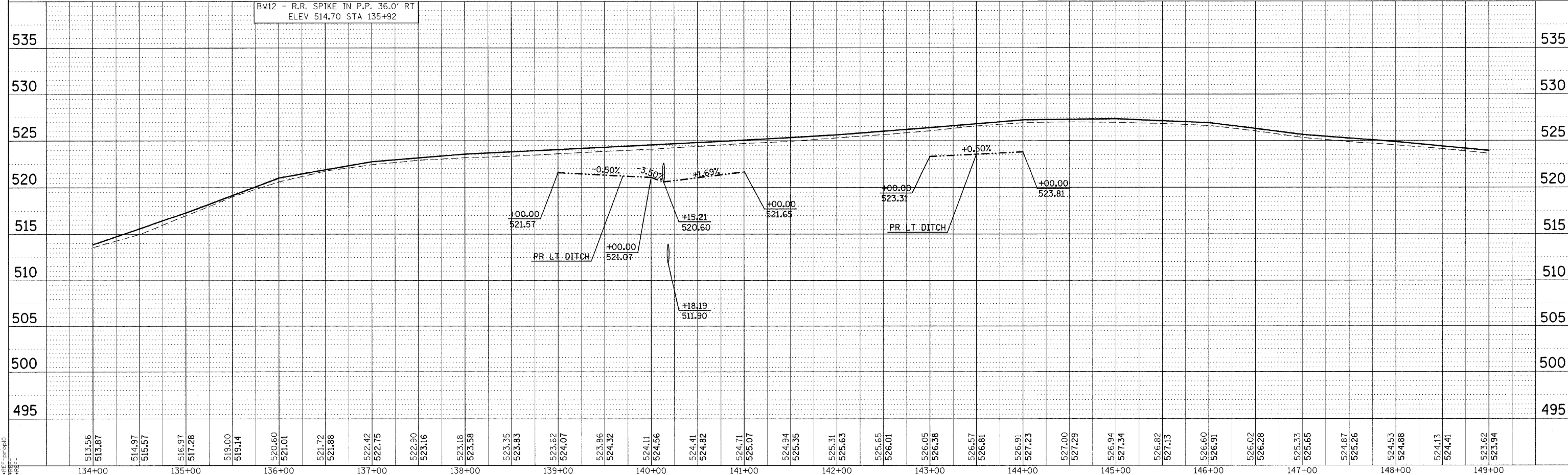


- TREE REMOVAL, ACRES
- TREE REMOVAL, UNIT
- EXISTING CONCRETE/BRICK DITCH CHECKS TO BE REMOVED
- STONE DUMPED RIP RAP, CLASS A4
- CLASS D PATCHING

ALL ENTRANCE RADII 15'  
UNLESS OTHERWISE NOTED

EXIST. CURVE 6  
PI STA. = 146+07.23  
 $\Delta = 14^\circ 10' 14''$  (RT)  
 $D = 11^\circ 38' 43''$   
 $R = 3,482.63'$   
 $T = 432.88'$   
 $L = 861.34'$   
 $E = 26.80'$   
P.C. STA. = 141+74.36  
P.T. STA. = 150+35.69

BM12 - R.R. SPIKE IN P.P. 36.0' RT  
ELEV 514.70 STA 135+92



PLAN PROFILE SHEET STA 134+00 TO 149+00

PLAN	DATE	BY
REVISION		
NO.		

PROFILE	DATE	BY
REVISION		
NO.		

\*DATE-TIME\*  
\*DGN-SPEC\*  
\*REF-10000\*  
\*REF-20000\*