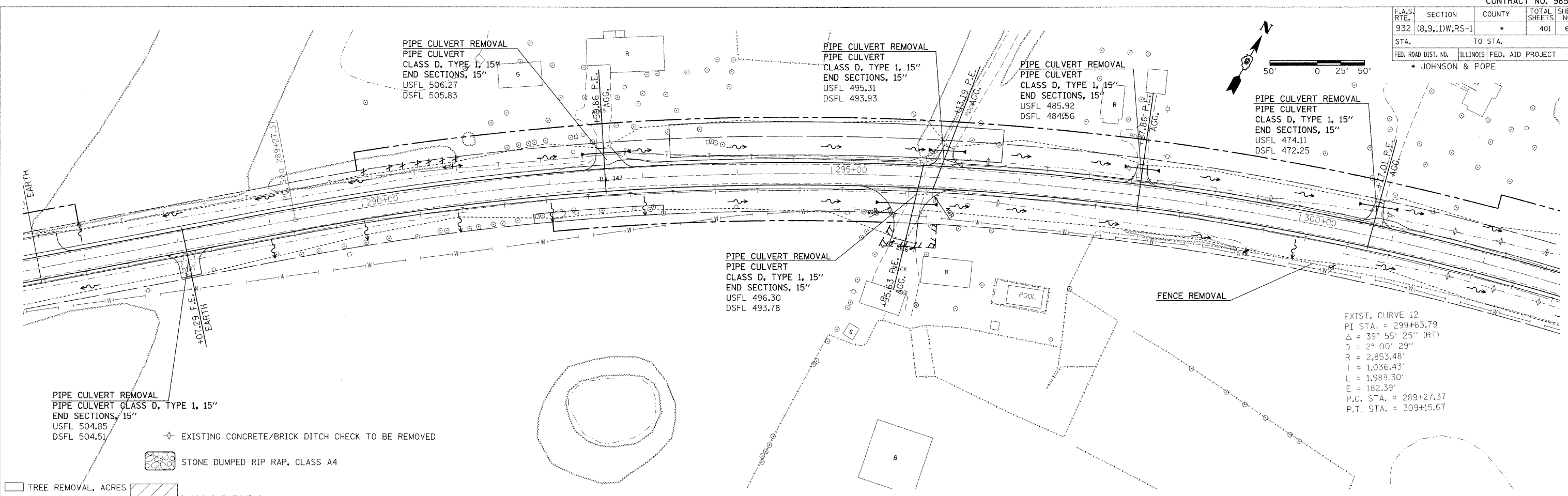
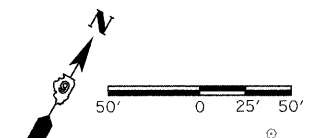


F.A.S. RTE.	SECTION	COUNTY	TOTAL SHEETS	SHEET NO.
932	(8,9,11)W,RS-1		401	63
STA.	TO STA.			
FED. ROAD DIST. NO.	ILLINOIS FED. AID PROJECT		• JOHNSON & POPE	

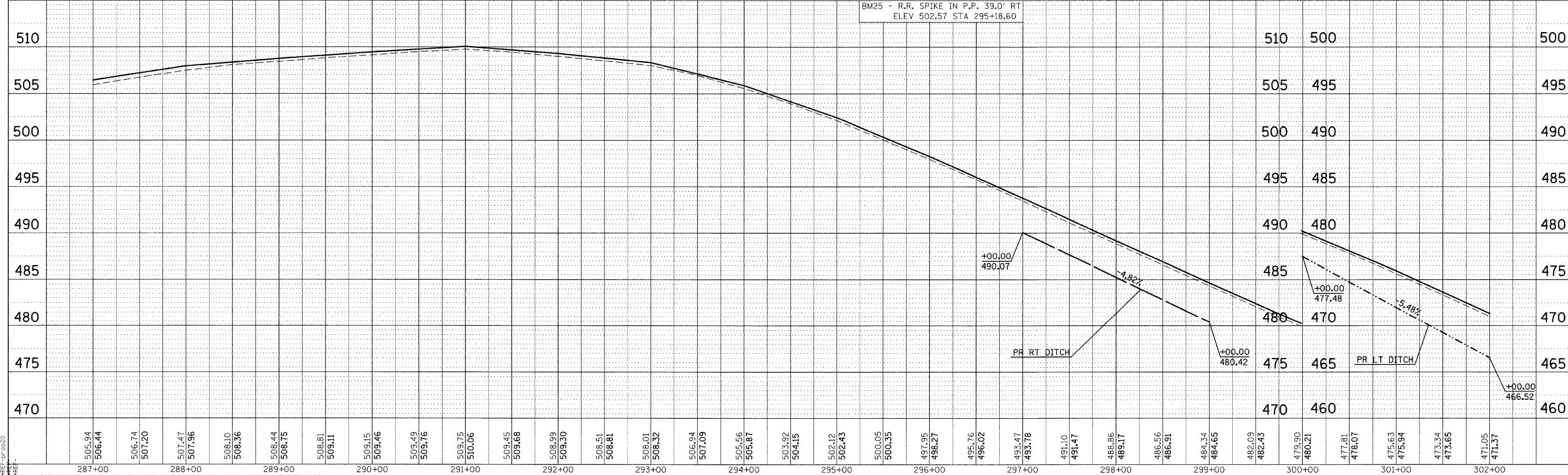


EXIST. CURVE 12  
 PI STA. = 299+63.79  
 $\Delta = 39^\circ 55' 25''$  (RT)  
 $D = 2^\circ 00' 29''$   
 $R = 2,853.48'$   
 $T = 1,036.43'$   
 $L = 1,988.30'$   
 $E = 182.39'$   
 P.C. STA. = 289+27.37  
 P.T. STA. = 309+15.67

PLAN	DATE
BY	
REVISIONS	
NO.	DESCRIPTION
1	ALIGNED, CHECKED, PLOTTED, AND FILED
2	ADD FILE NAME

PROFILE	DATE
BY	
REVISIONS	
NO.	DESCRIPTION
1	GRADES CHECKED, PLOTTED, AND FILED
2	STRUCTURE NOTATIONS ADDED

- TREE REMOVAL, ACRES
- × TREE REMOVAL, UNIT
- ▨ CLASS D PATCHING



PLAN PROFILE SHEET STA 287+00 TO 302+00

DATE-TIME  
 DGN-SPEC  
 REF-TODOS  
 PREP