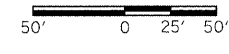


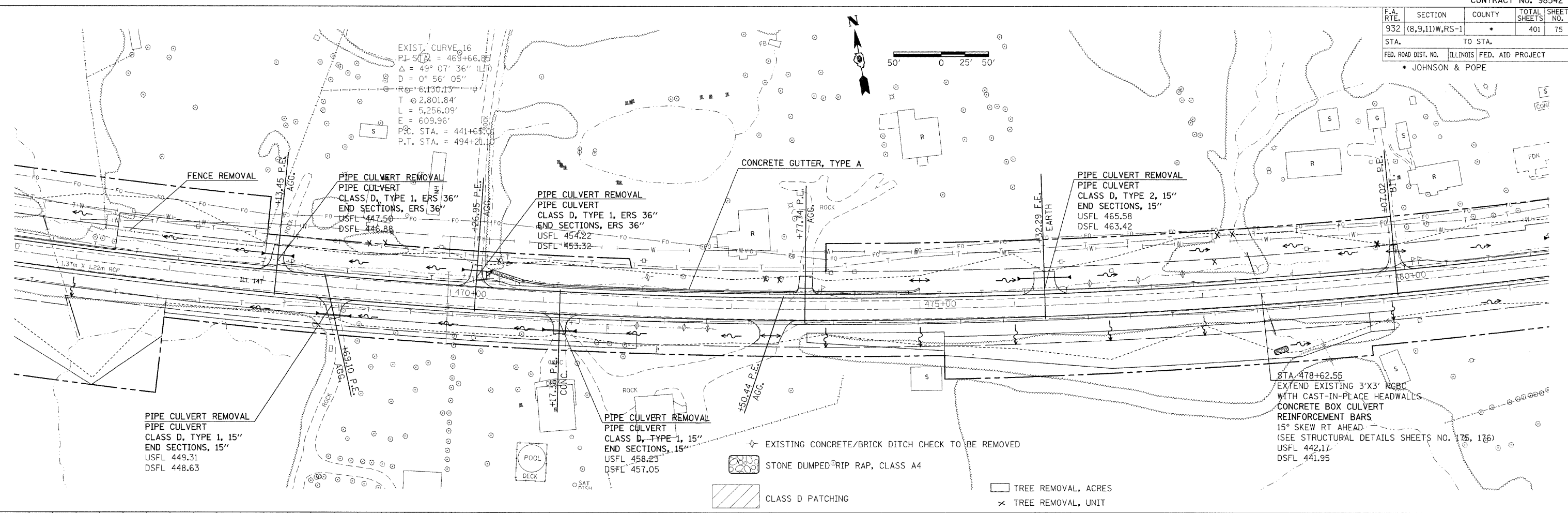
F.A. RTE.	SECTION	COUNTY	TOTAL SHEETS	SHEET NO.
932	(8,9,11)W,RS-1		401	75
STA.	TO STA.			
FED. ROAD DIST. NO.	ILLINOIS	FED. AID PROJECT		
• JOHNSON & POPE				

EXIST. CURVE 16  
 PI STA = 468+66.83  
 $\Delta = 49^\circ 07' 36''$  (LIT)  
 $D = 0^\circ 56' 05''$   
 $R = 6,130.13'$   
 $T = 2,801.84'$   
 $L = 5,256.09'$   
 $E = 609.96'$   
 P.C. STA. = 441+63.50  
 P.T. STA. = 494+21.10



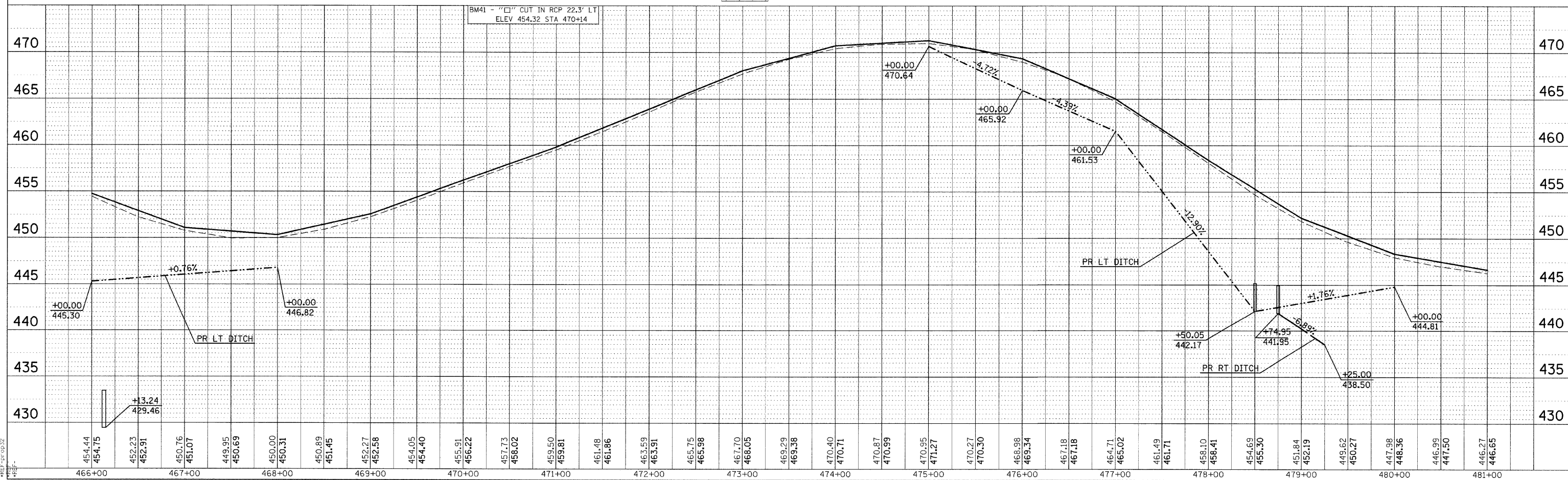
PLAN	DATE
BY	
REVISIONS	
NO.	DESCRIPTION

PROFILE	DATE
BY	
REVISIONS	
NO.	DESCRIPTION



- ◇ EXISTING CONCRETE/BRICK DITCH CHECK TO BE REMOVED
- ⊞ STONE DUMPED RIP RAP, CLASS A4
- ▨ CLASS D PATCHING
- TREE REMOVAL, ACRES
- × TREE REMOVAL, UNIT

BM41 - "□" CUT IN RCP 22.3' LT  
 ELEV 454.32 STA 470+14



PLAN PROFILE SHEET STA 466+00 TO 481+00

\*DATE-TIME\*  
 \*JOB-SPEC\*  
 \*REF-NO\*  
 \*REF-DATE\*