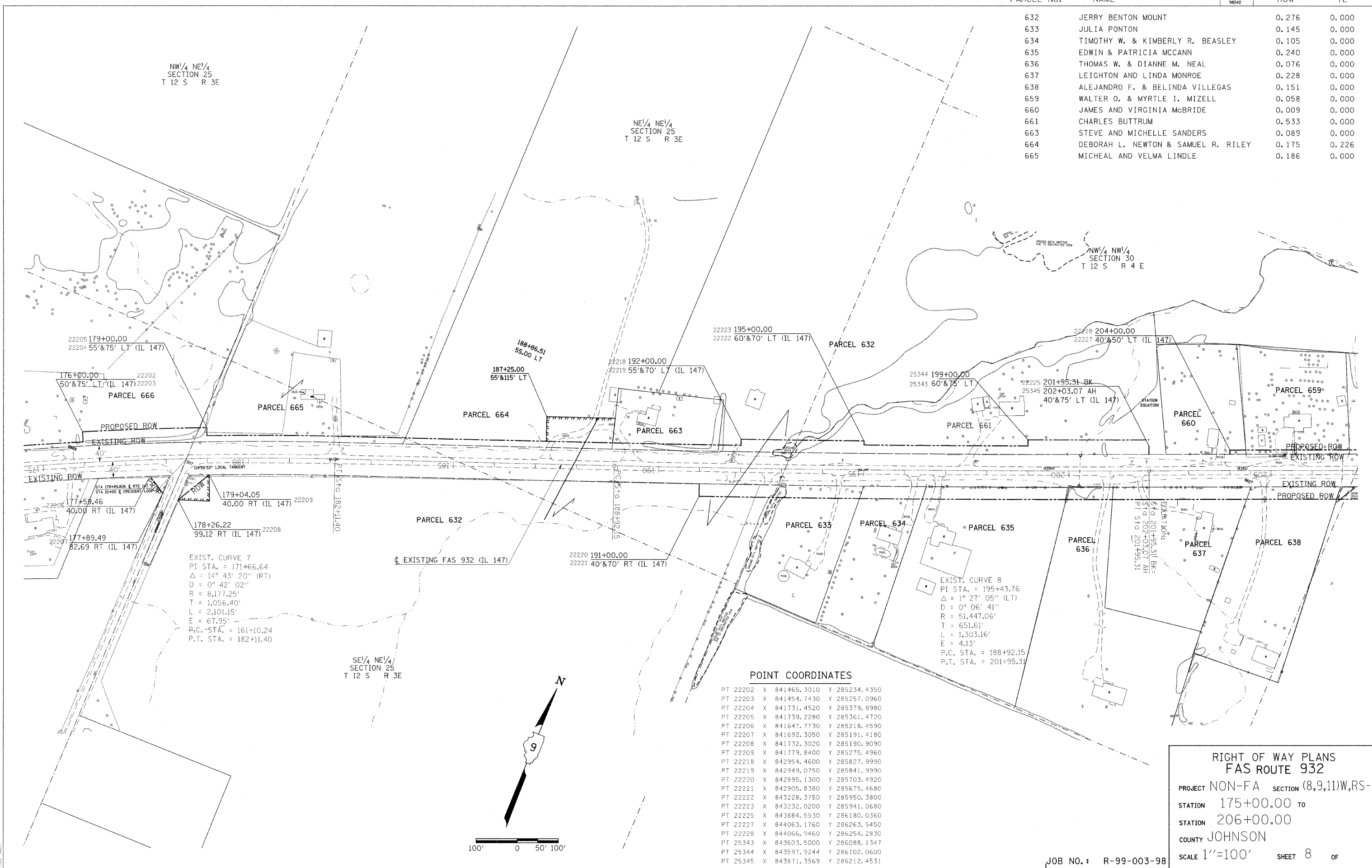


PARCEL NO.	NAME	ROW	TE
632	JERRY BENTON MOUNT	0.276	0.000
633	JULIA PONTON	0.145	0.000
634	TIMOTHY W. & KIMBERLY R. BEASLEY	0.105	0.000
635	EDWIN & PATRICIA MCCANN	0.240	0.000
636	THOMAS W. & DIANNE M. NEAL	0.076	0.000
637	LEIGHTON AND LINDA MONROE	0.228	0.000
638	ALEJANDRO F. & BELINDA VILLEGAS	0.151	0.000
659	WALTER O. & MYRTLE I. MIZELL	0.058	0.000
660	JAMES AND VIRGINIA McBRIDE	0.009	0.000
661	CHARLES BUTTRUM	0.533	0.000
663	STEVE AND MICHELLE SANDERS	0.089	0.000
664	DEBORAH L. NEWTON & SAMUEL R. RILEY	0.175	0.226
665	MICHEAL AND VELMA LINDLE	0.186	0.000

DATE \_\_\_\_\_  
 REVISOR BY \_\_\_\_\_  
 DATE \_\_\_\_\_  
 DRAWN BY \_\_\_\_\_



**POINT COORDINATES**

PT 22202	X	841465.3010	Y	285234.4350
PT 22203	X	841454.7430	Y	285257.0960
PT 22204	X	841731.4520	Y	285379.8980
PT 22205	X	841739.2280	Y	285361.4720
PT 22206	X	841647.7730	Y	285218.4590
PT 22207	X	841692.3050	Y	285191.4180
PT 22208	X	841732.3020	Y	285190.9090
PT 22209	X	841779.8400	Y	285275.4960
PT 22218	X	842954.4600	Y	285827.9990
PT 22219	X	842949.0750	Y	285841.9990
PT 22220	X	842895.1300	Y	285703.4920
PT 22221	X	842905.8380	Y	285675.4680
PT 22222	X	843228.3750	Y	285950.3800
PT 22223	X	843232.0200	Y	285941.0680
PT 22225	X	843884.5530	Y	286180.0360
PT 22227	X	844063.1760	Y	286263.5450
PT 22228	X	844066.9460	Y	286254.2830
PT 25343	X	843603.5000	Y	286088.1347
PT 25344	X	843597.9244	Y	286102.0600
PT 25345	X	843871.3569	Y	286212.4531

NW 1/4 NE 1/4  
SECTION 25  
T 12 S R 3E

NE 1/4 NE 1/4  
SECTION 25  
T 12 S R 3E

NW 1/4 NW 1/4  
SECTION 30  
T 12 S R 4 E

EXIST. CURVE 7  
 PI STA. = 171+66.64  
 $\Delta = 14^\circ 43' 20''$  (RT)  
 $D = 0^\circ 42' 02''$   
 $R = 8,177.25'$   
 $T = 1,056.40'$   
 $L = 2,101.15'$   
 $E = 67.95'$   
 P.C. STA. = 161+10.24  
 P.T. STA. = 182+11.40

EXIST. CURVE 8  
 PI STA. = 195+43.76  
 $\Delta = 1^\circ 27' 05''$  (LT)  
 $D = 0^\circ 06' 41''$   
 $R = 51,447.06'$   
 $T = 651.61'$   
 $L = 1,303.16'$   
 $E = 4.13'$   
 P.C. STA. = 188+92.15  
 P.T. STA. = 201+95.31

**RIGHT OF WAY PLANS  
FAS ROUTE 932**

PROJECT NON-FA SECTION (8,9,11)W,RS-1

STATION 175+00.00 TO  
STATION 206+00.00

COUNTY JOHNSON

SCALE 1"=100' SHEET 8 OF

JOB NO. : R-99-003-98