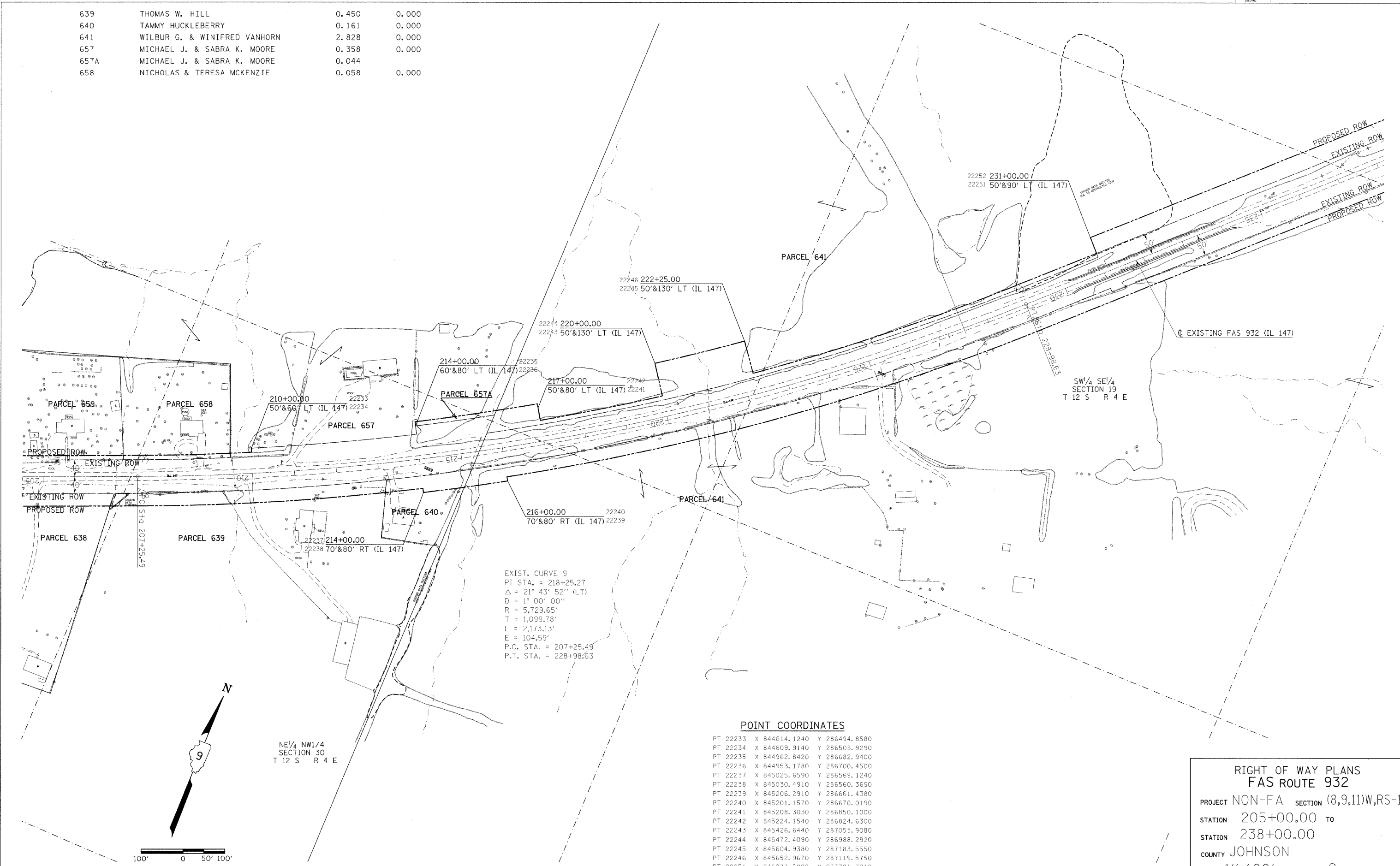


PARCEL NO.	NAME	ROW	TE
639	THOMAS W. HILL	0.450	0.000
640	TAMMY HUCKLEBERRY	0.161	0.000
641	WILBUR G. & WINIFRED VANHORN	2.828	0.000
657	MICHAEL J. & SABRA K. MOORE	0.358	0.000
657A	MICHAEL J. & SABRA K. MOORE	0.044	
658	NICHOLAS & TERESA MCKENZIE	0.058	0.000

REVISED BY _____ DATE _____

DATE _____

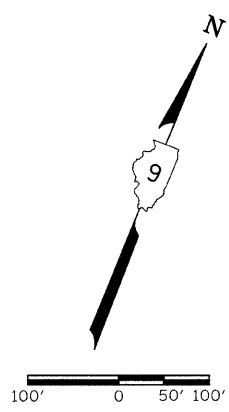
DRAWN BY _____



EXIST. CURVE 9
 PI STA. = 218+25.27
 $\Delta = 21^\circ 43' 52''$ (LT)
 $D = 1^\circ 00' 00''$
 $R = 5,729.65'$
 $T = 1,099.78'$
 $L = 2,173.13'$
 $E = 104.59'$
 P.C. STA. = 207+25.49
 P.T. STA. = 228+98.63

POINT COORDINATES

PT 22233	X 844614.1240	Y 286494.8580
PT 22234	X 844609.9140	Y 286503.9290
PT 22235	X 844962.8420	Y 286682.9400
PT 22236	X 844953.1780	Y 286700.4500
PT 22237	X 845025.6590	Y 286569.1240
PT 22238	X 845030.4910	Y 286560.3690
PT 22239	X 845206.2910	Y 286661.4380
PT 22240	X 845201.1570	Y 286670.0190
PT 22241	X 845208.3030	Y 286850.1000
PT 22242	X 845224.1540	Y 286824.6300
PT 22243	X 845426.6440	Y 287053.9080
PT 22244	X 845472.4090	Y 286988.2920
PT 22245	X 845604.9380	Y 287183.5550
PT 22246	X 845652.9670	Y 287119.5750
PT 22251	X 846277.5820	Y 287721.3910
PT 22252	X 846305.3090	Y 287692.5600



NE 1/4 NW 1/4
 SECTION 30
 T 12 S R 4 E

RIGHT OF WAY PLANS
FAS ROUTE 932
 PROJECT NON-FA SECTION (8,9,11)W,RS-1
 STATION 205+00.00 TO
 STATION 238+00.00
 COUNTY JOHNSON
 SCALE 1"=100' SHEET 9 OF

JOB NO.: R-99-003-98

8/6/2008
 c:\projects\9803298\ndoc\quest10m\9803298r1.dgn
 REF: 1028
 REF: ALB