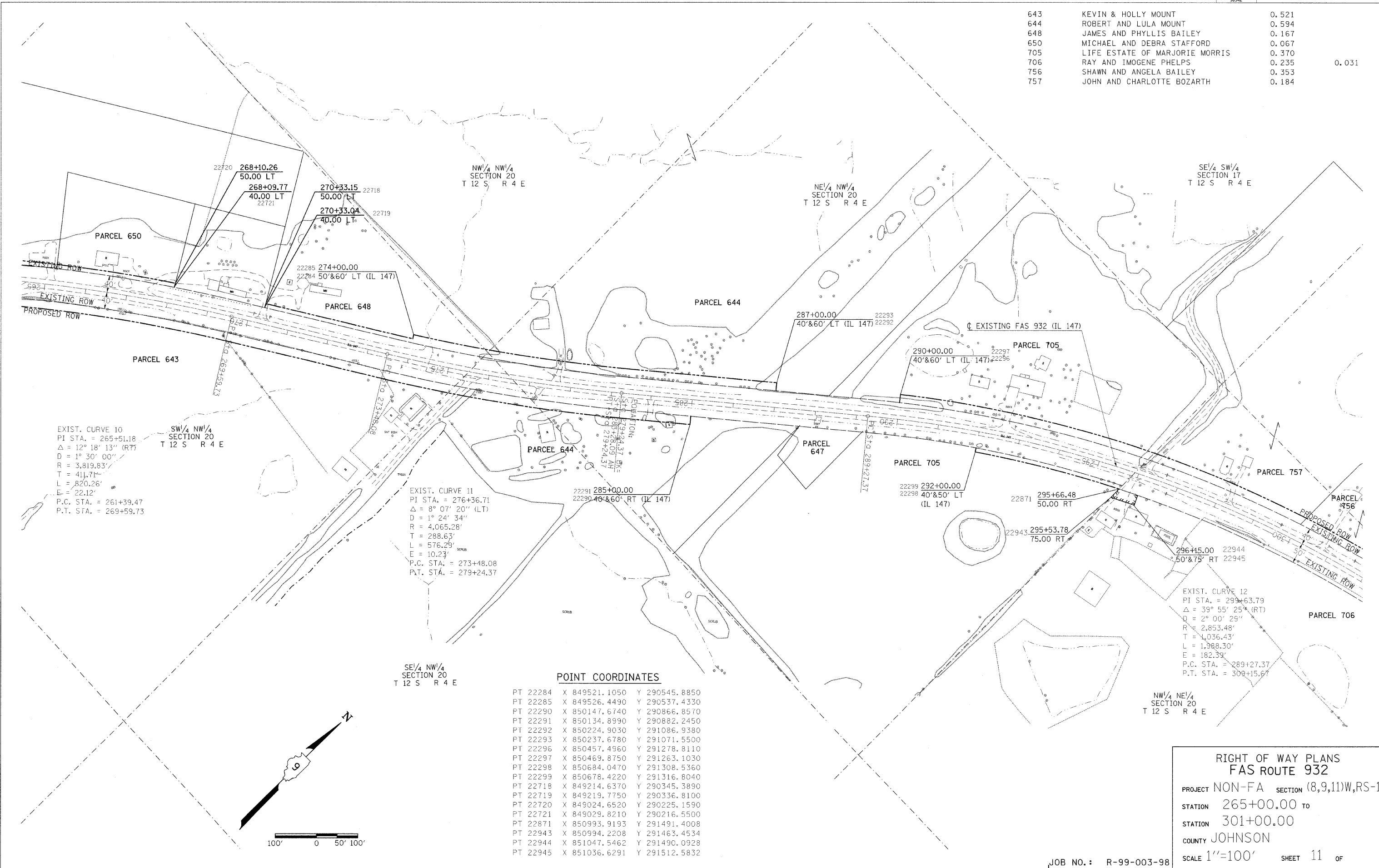


PARCEL NO.	NAME	AREA	TE
643	KEVIN & HOLLY MOUNT	0.521	
644	ROBERT AND LULA MOUNT	0.594	
648	JAMES AND PHYLLIS BAILEY	0.167	
650	MICHAEL AND DEBRA STAFFORD	0.067	
705	LIFE ESTATE OF MARJORIE MORRIS	0.370	
706	RAY AND IMOGENE PHELPS	0.235	0.031
756	SHAWN AND ANGELA BAILEY	0.353	
757	JOHN AND CHARLOTTE BOZARTH	0.184	

REVISIONS: DATE _____ REVISED BY _____
 DRAWN BY _____ DATE _____



EXIST. CURVE 10
 PI STA. = 265+51.18
 $\Delta = 12^\circ 18' 13''$ (RT)
 $D = 1^\circ 30' 00''$
 $R = 3,819.83'$
 $T = 411.71'$
 $L = 820.26'$
 $E = 22.12'$
 P.C. STA. = 261+39.47
 P.T. STA. = 269+59.73

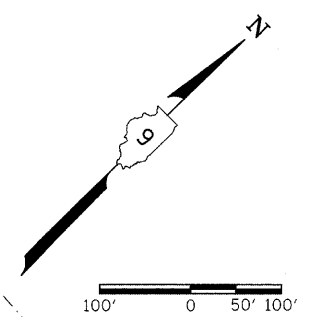
EXIST. CURVE 11
 PI STA. = 276+36.71
 $\Delta = 8^\circ 07' 20''$ (LT)
 $D = 1^\circ 24' 34''$
 $R = 4,065.28'$
 $T = 288.63'$
 $L = 576.29'$
 $E = 10.23'$
 P.C. STA. = 273+48.08
 P.T. STA. = 279+24.37

EXIST. CURVE 12
 PI STA. = 293+63.79
 $\Delta = 39^\circ 55' 25''$ (RT)
 $D = 2^\circ 00' 29''$
 $R = 2,853.48'$
 $T = 1,036.43'$
 $L = 1,988.30'$
 $E = 182.39'$
 P.C. STA. = 289+27.37
 P.T. STA. = 309+15.67

SE/4 NW/4
 SECTION 20
 T 12 S R 4 E

POINT COORDINATES

PT 22284	X 849521.1050	Y 290545.8850
PT 22285	X 849526.4490	Y 290537.4330
PT 22290	X 850147.6740	Y 290866.8570
PT 22291	X 850134.8990	Y 290882.2450
PT 22292	X 850224.9030	Y 291086.9380
PT 22293	X 850237.6780	Y 291071.5500
PT 22296	X 850457.4960	Y 291278.8110
PT 22297	X 850469.8750	Y 291263.1030
PT 22298	X 850684.0470	Y 291308.5360
PT 22299	X 850678.4220	Y 291316.8040
PT 22718	X 849214.6370	Y 290345.3890
PT 22719	X 849219.7750	Y 290336.8100
PT 22720	X 849024.6520	Y 290225.1590
PT 22721	X 849029.8210	Y 290216.5500
PT 22871	X 850993.9193	Y 291491.4008
PT 22943	X 850994.2208	Y 291463.4534
PT 22944	X 851047.5462	Y 291490.0928
PT 22945	X 851036.6291	Y 291512.5832



RIGHT OF WAY PLANS
FAS ROUTE 932
 PROJECT NON-FA SECTION (8,9,11)W,RS-1
 STATION 265+00.00 TO 301+00.00
 COUNTY JOHNSON
 SCALE 1"=100' SHEET 11 OF

8/6/2008
 C:\p\0\ref\1\9003298\amdoc\ref\1\900338r2.dgn
 REF-AL1