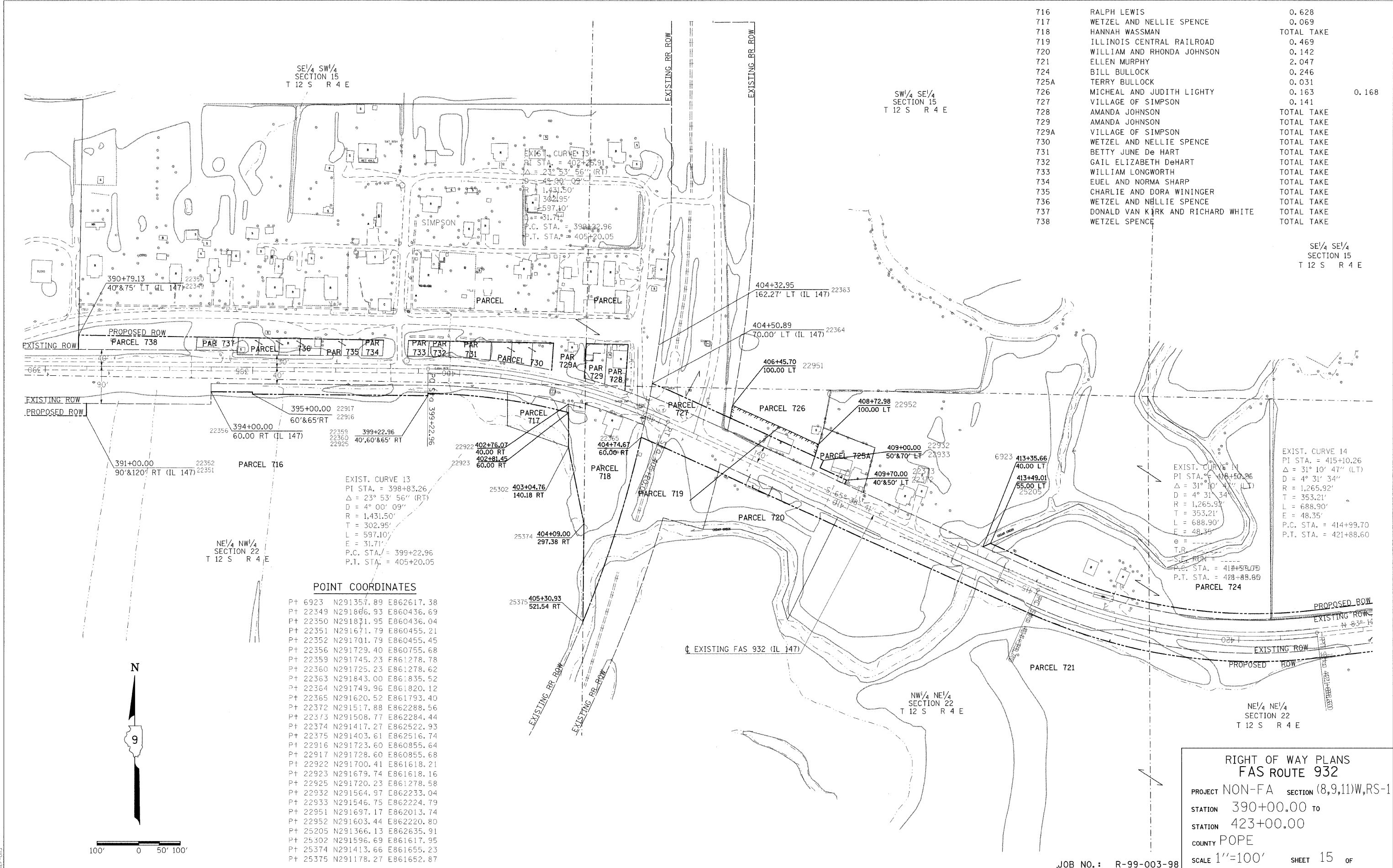


PARCEL NO.	NAME	ROW	TE
716	RALPH LEWIS	0.628	
717	WETZEL AND NELLIE SPENCE	0.069	
718	HANNAH WASSMAN	TOTAL TAKE	
719	ILLINOIS CENTRAL RAILROAD	0.469	
720	WILLIAM AND RHONDA JOHNSON	0.142	
721	ELLEN MURPHY	2.047	
724	BILL BULLOCK	0.246	
725A	TERRY BULLOCK	0.031	
726	MICHEAL AND JUDITH LIGHTY	0.163	0.168
727	VILLAGE OF SIMPSON	0.141	
728	AMANDA JOHNSON	TOTAL TAKE	
729	AMANDA JOHNSON	TOTAL TAKE	
729A	VILLAGE OF SIMPSON	TOTAL TAKE	
730	WETZEL AND NELLIE SPENCE	TOTAL TAKE	
731	BETTY JUNE De HART	TOTAL TAKE	
732	GAIL ELIZABETH DeHART	TOTAL TAKE	
733	WILLIAM LONGWORTH	TOTAL TAKE	
734	EUEL AND NORMA SHARP	TOTAL TAKE	
735	CHARLIE AND DORA WININGER	TOTAL TAKE	
736	WETZEL AND NELLIE SPENCE	TOTAL TAKE	
737	DONALD VAN KIRK AND RICHARD WHITE	TOTAL TAKE	
738	WETZEL SPENCE	TOTAL TAKE	

REVISED BY \_\_\_\_\_ DATE \_\_\_\_\_  
 DRAWN BY \_\_\_\_\_ DATE \_\_\_\_\_



SE 1/4 SW 1/4 SECTION 15  
T 12 S R 4 E

SW 1/4 SE 1/4 SECTION 15  
T 12 S R 4 E

SE 1/4 SE 1/4 SECTION 15  
T 12 S R 4 E

**POINT COORDINATES**

Pt 6923	N291357.89	E862617.38
Pt 22349	N291866.93	E860436.69
Pt 22350	N291831.95	E860436.04
Pt 22351	N291671.79	E860455.21
Pt 22352	N291701.79	E860455.45
Pt 22356	N291729.40	E860755.68
Pt 22359	N291745.23	E861278.78
Pt 22360	N291725.23	E861278.62
Pt 22363	N291843.00	E861835.52
Pt 22364	N291749.96	E861820.12
Pt 22365	N291620.52	E861793.40
Pt 22372	N291517.88	E862288.56
Pt 22373	N291508.77	E862284.44
Pt 22374	N291417.27	E862522.93
Pt 22375	N291403.61	E862516.74
Pt 22916	N291723.60	E860855.64
Pt 22917	N291728.60	E860855.68
Pt 22922	N291700.41	E861618.21
Pt 22923	N291679.74	E861618.16
Pt 22925	N291720.23	E861278.58
Pt 22932	N291564.97	E862233.04
Pt 22933	N291546.75	E862224.79
Pt 22951	N291697.17	E862013.74
Pt 22952	N291603.44	E862220.80
Pt 25205	N291366.13	E862635.91
Pt 25302	N291596.69	E861617.95
Pt 25374	N291413.66	E861655.23
Pt 25375	N291178.27	E861652.87

**RIGHT OF WAY PLANS  
FAS ROUTE 932**

PROJECT NON-FA SECTION (8,9,11)W,RS-1

STATION 390+00.00 TO 423+00.00

COUNTY POPE

SCALE 1"=100' SHEET 15 OF

JOB NO.: R-99-003-98

\*DATE-TIME\*  
\*CON-REC\*  
\*REF-015\*