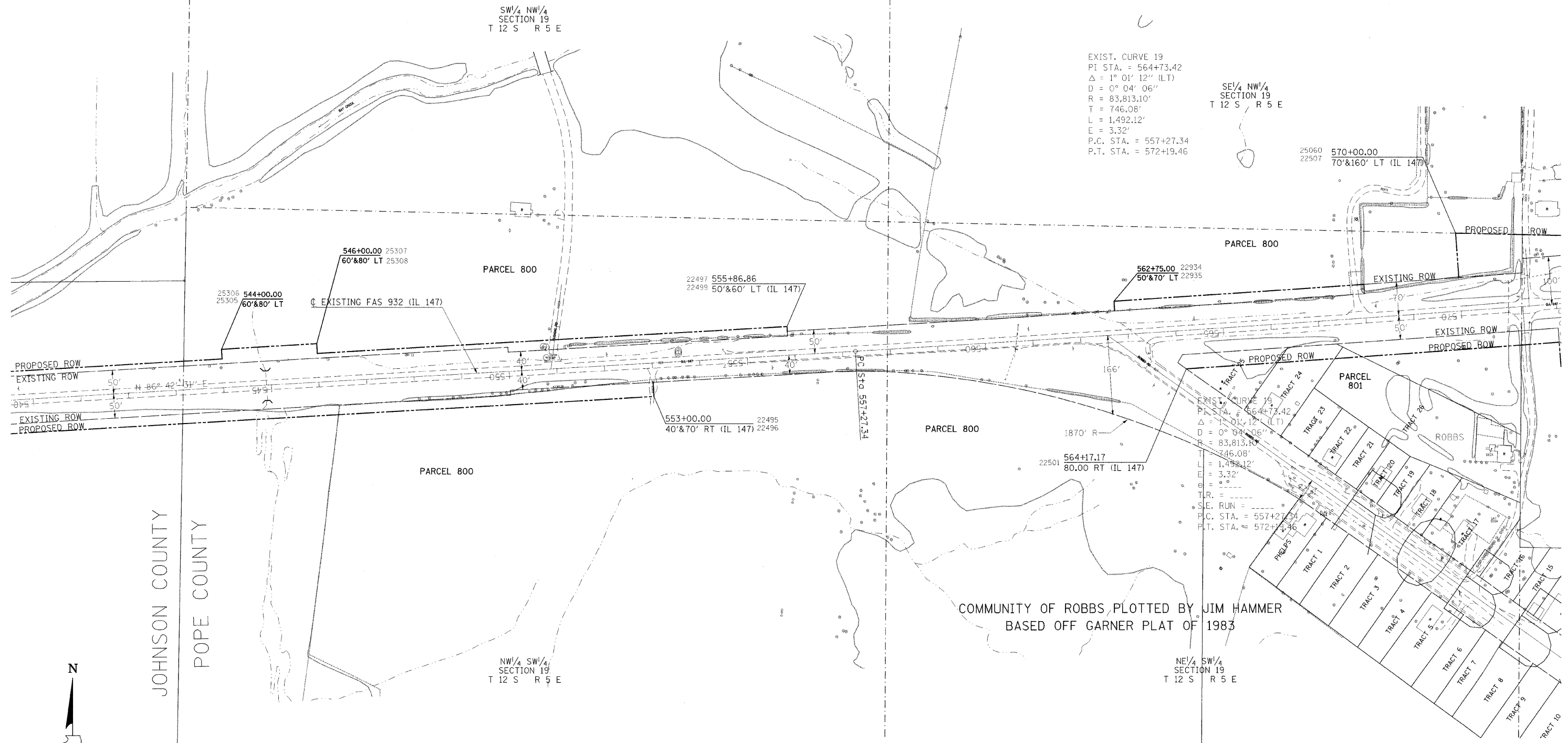


F.A. DIST.	SECTION	COUNTY	TOTAL SHEETS	SHEET NO.
FAS 932	(8,9,11)W,RS-1	POPE & JOHNSON	401	154
FED. ROAD DIST. NO.	BLINDS	FED. AID PROJECT	ROW	TE
CONTRACT NO. 98542				

PARCEL NO.	NAME	ROW
800	UNITED STATES OF AMERICA	8.956
801	ALAN, SHARON AND STEVEN ROBB AND GARY WISE	0.244

REVISOR BY _____ DATE _____
DRAWN BY _____ DATE _____



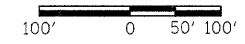
SE 1/4 NW 1/4
SECTION 19
T 12 S R 5 E

EXIST. CURVE 19
PI STA. = 564+73.42
Δ = 1° 01' 12" (LT)
D = 0° 04' 06"
R = 83,813.10'
T = 746.08'
L = 1,492.12'
E = 3.32'
P.C. STA. = 557+27.34
P.T. STA. = 572+19.46

EXIST. CURVE 19
PI STA. = 564+73.42
Δ = 1° 01' 12" (LT)
D = 0° 04' 06"
R = 83,813.10'
T = 746.08'
L = 1,492.12'
E = 3.32'
P.C. STA. = 557+27.34
P.T. STA. = 572+19.46

COMMUNITY OF ROBBS, PLOTTED BY JIM HAMMER
BASED OFF GARNER PLAT OF 1983

JOHNSON COUNTY
POPE COUNTY



POINT COORDINATES

PT 22495	X 875879.2770	Y 289361.5740
PT 22496	X 875881.0000	Y 289331.6230
PT 22497	X 876160.4910	Y 289468.0120
PT 22499	X 876159.9240	Y 289477.8780
PT 22501	X 876997.3860	Y 289388.6530
PT 22507	X 877568.4930	Y 289578.5680
PT 22934	X 876845.790	Y 289529.128
PT 22935	X 876847.069	Y 289509.169
PT 25060	X 877561.739	Y 289671.409
PT 25305	X 874975.020	Y 289409.738
PT 25306	X 874973.872	Y 289429.705
PT 25307	X 875173.542	Y 289441.187
PT 25308	X 875174.691	Y 289421.220

**RIGHT OF WAY PLANS
FAS ROUTE 932**

PROJECT NON-FA SECTION (8,9,11)W,RS-1

STATION 540+00.00 TO
572+00.00

COUNTY POPE

SCALE SHEET 20 OF

JOB NO. : R-99-003-98

DATE-TIME
BY-
REF-0110