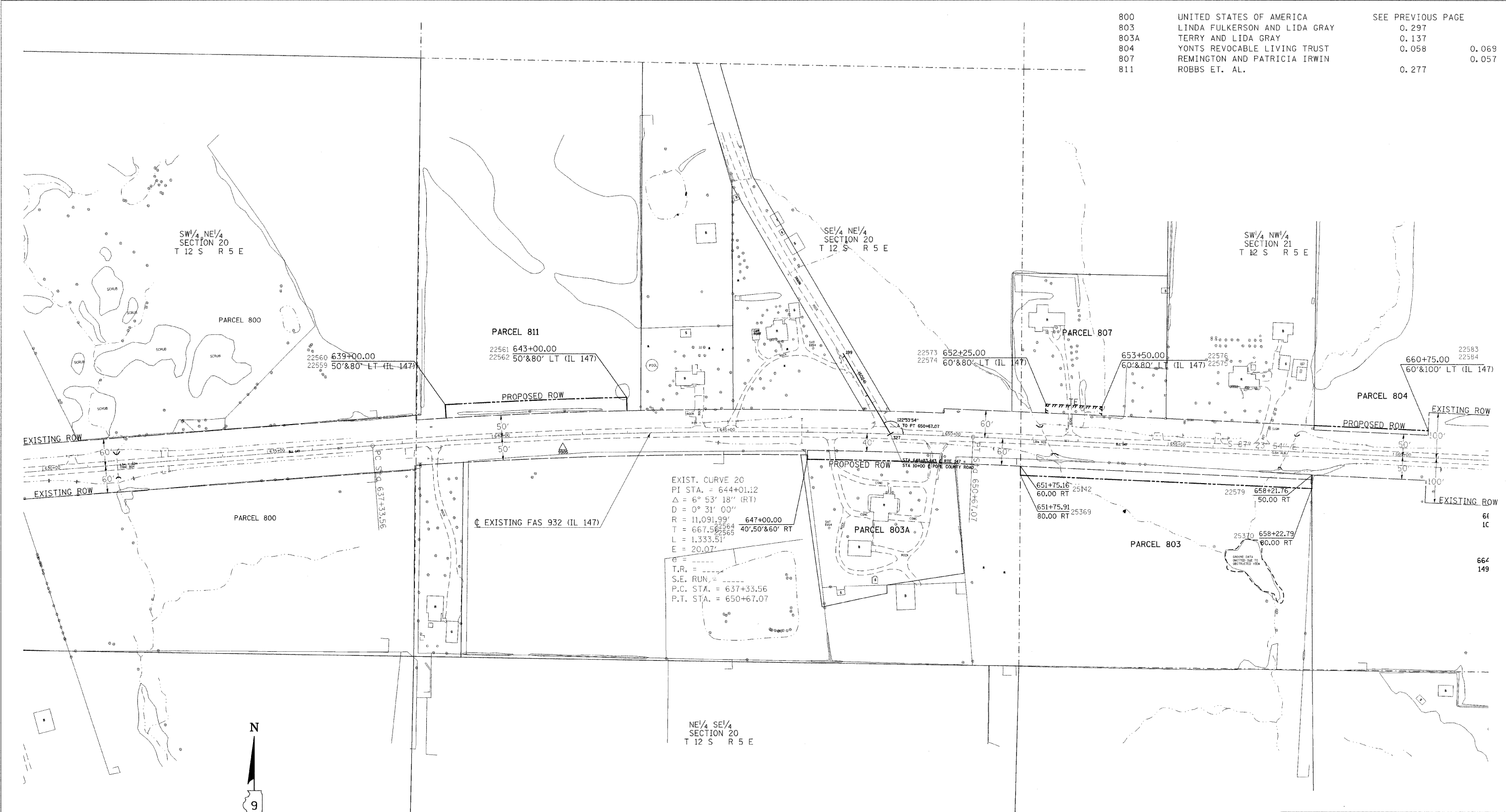


PARCEL NO.	NAME	SEE PREVIOUS PAGE
800	UNITED STATES OF AMERICA	0.297
803	LINDA FULKERSON AND LIDA GRAY	0.137
803A	TERRY AND LIDA GRAY	0.058
804	YONTS REVOCABLE LIVING TRUST	0.069
807	REMINGTON AND PATRICIA IRWIN	0.057
811	ROBBS ET. AL.	0.277

REVISED BY \_\_\_\_\_ DATE \_\_\_\_\_  
 DRAWN BY \_\_\_\_\_ DATE \_\_\_\_\_



EXIST. CURVE 20  
 PI STA. = 644+01.12  
 $\Delta = 6^\circ 53' 18''$  (RT)  
 $D = 0^\circ 31' 00''$   
 $R = 11,091.99'$   
 $T = 667.56$   
 $L = 1,333.51'$   
 $E = 20.07'$   
 $T.R. =$   
 $S.E. RUN =$   
 P.C. STA. = 637+33.56  
 P.T. STA. = 650+67.07

**POINT COORDINATES**

PT 22559	X 884444.8500	Y 290103.4190	PT 22579	X 886367.7770	Y 289947.7610
PT 22560	X 884446.6430	Y 290073.4730	PT 25370	X 886367.4419	Y 289917.7457
PT 22561	X 884848.0740	Y 290090.2550	PT 22573	X 885776.6240	Y 290084.7350
PT 22562	X 884847.3620	Y 290120.2460	PT 22574	X 885777.5320	Y 290104.7140
PT 22564	X 885248.6180	Y 289992.5600	PT 22575	X 885902.4030	Y 290099.0410
PT 22565	X 885248.4947	Y 289982.5608	PT 22576	X 885901.4960	Y 290079.0610
PT 25142	X 885721.3900	Y 289967.1210	PT 22577	X 886372.5590	Y 290057.6580
PT 25369	X 885721.2295	Y 289947.1074	PT 22578	X 886372.1250	Y 290047.6670
			PT 22583	X 886625.2940	Y 290036.1640
			PT 22584	X 886625.7480	Y 290046.1540

NW/4 SE/4  
 SECTION 20  
 T 12 S R 5 E

NW/4 SW/4  
 SECTION 21  
 T 12 S R 5 E

**RIGHT OF WAY PLANS**  
**FAS ROUTE 932**  
 PROJECT NON-FA SECTION (8,9,11)W,RS-1  
 STATION 630+00.00 TO  
 STATION 662+00.00  
 COUNTY POPE  
 SCALE 1"=100' SHEET 23 OF

JOB NO.: R-99-003-98

8/6/2008  
 c:\pro\refa\p03298\undoc\p1on\900398r3.dgn  
 REF-T003  
 REF-015