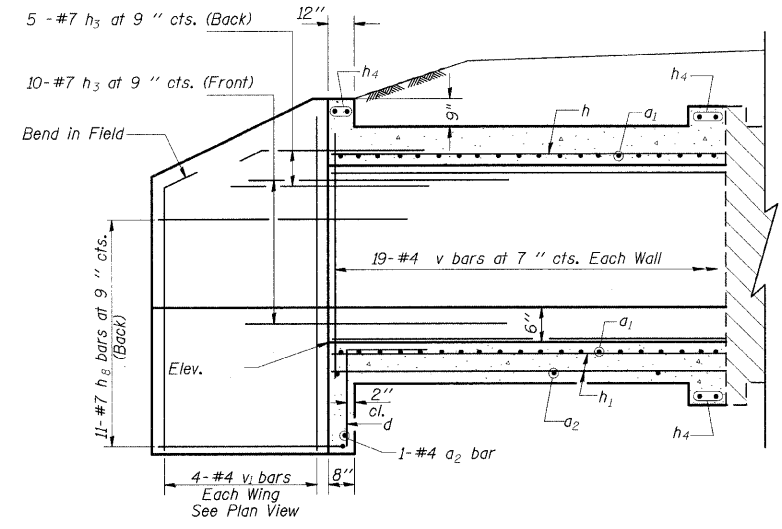
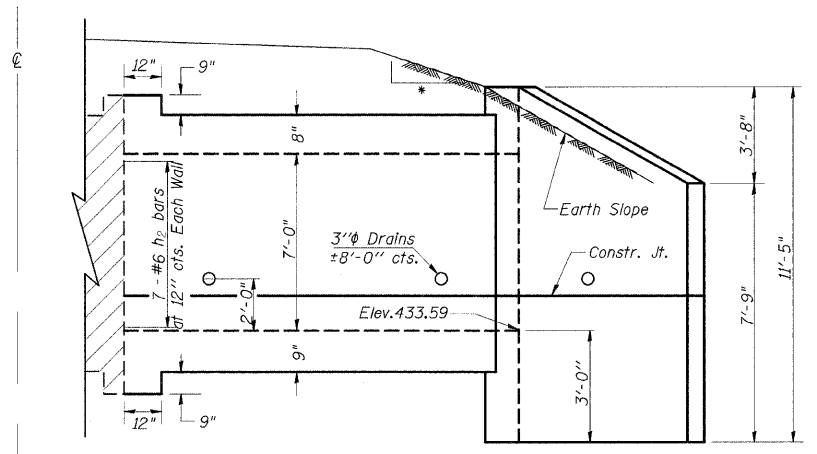


STATE OF ILLINOIS
DEPARTMENT OF TRANSPORTATION

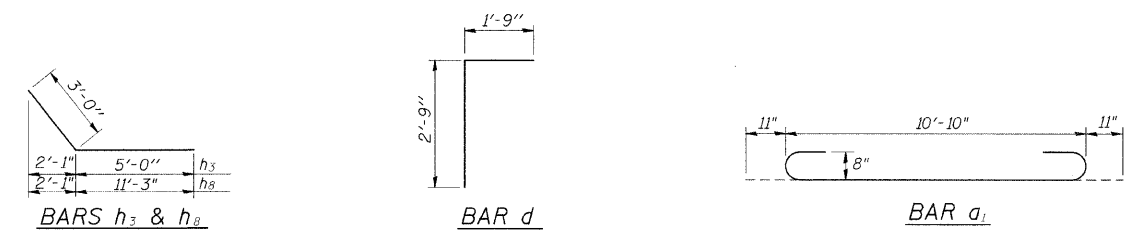
F.A.S. RTE	SECTION	COUNTY	TOTAL SHEETS	SHEET NO
932	(8,9,11W,RS-1		401	166
STA.	TO STA.			
FED. ROAD DIST. NO.	ILLINOIS	FED. AID PROJECT		
JOHNSON/POPE				



HALF LONG. SECTION

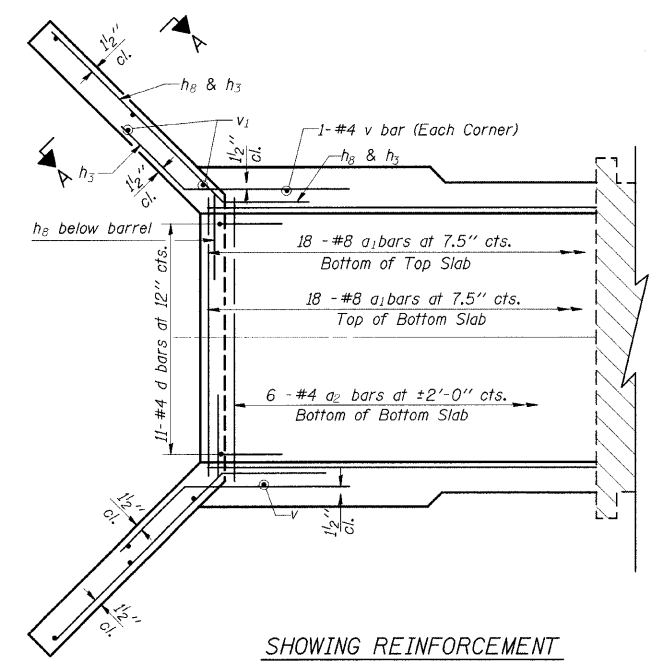


HALF ELEVATION
• 4:1 TO CLEAR ZONE
3:1 AFTER CLEAR ZONE

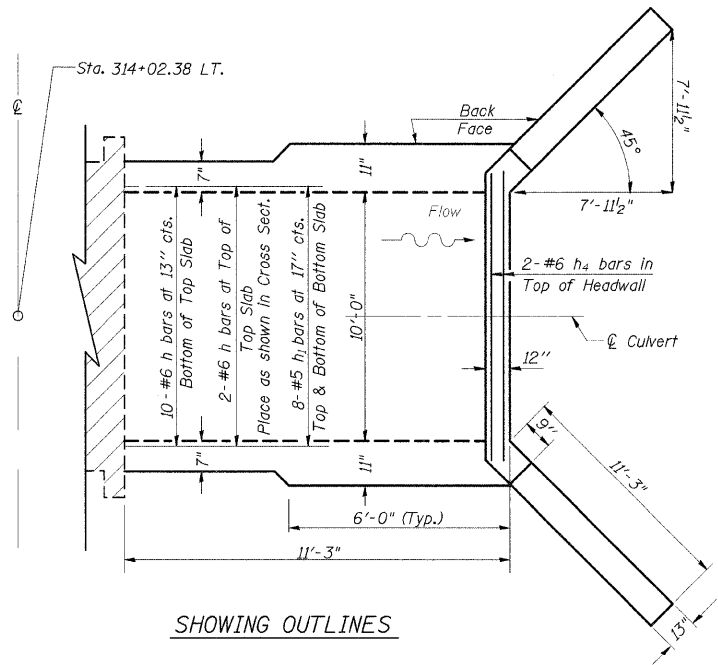


DESIGN STRESSES
fy = 60,000 psi
f'c = 3,500 psi

LOADING HS 20-44 & ALT.

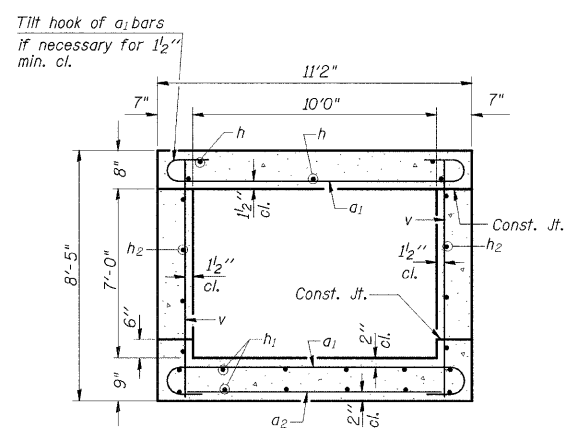


SHOWING REINFORCEMENT

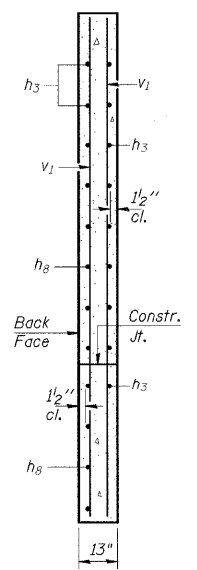


SHOWING OUTLINES

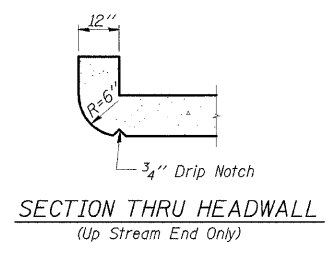
PLAN



SECTION THRU BARREL



SECTION A-A



SECTION THRU HEADWALL
(Up Stream End Only)

BILL OF MATERIAL

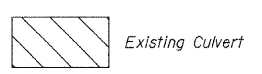
Bar	No.	Size	Length	Shape	
a1	36	#8	12'-8"	U	
a2	7	#4	10'-3"	—	
d	11	#4	4'-6"	L	
h	12	#6	11'-0"	—	
h1	16	#5	11'-0"	—	
h2	14	#6	11'-0"	—	
h3	30	#7	8'-0"	—	
h4	6	#6	10'-3"	—	
h8	22	#7	14'-3"	—	
v	40	#4	8'-1"	—	
v1	8	#4	10'-11"	—	
Expansion Bolts 3/4"				Each	24
Concrete Box Culverts				Cu. Yd.	20.8
Reinforcement Bars				Pound	3410

PRECAST OPTION NOT ALLOWED

NOTES

A distance of half the length of the wingwall but not less than six feet of the barrel shall be poured monolithically with the wingwalls.
Reinforcement Bars shall conform to the requirements of AASHTO M-31, M-42 or M-53, Grade 60.
Bars indicated thus 12 x 4-#5 etc. indicates 12 lines of bars with 4 lengths per line.
All construction joints shall be bonded.

LEGEND



ILLINOIS DEPARTMENT OF TRANSPORTATION
BOX CULVERT EXTENSION
STATION 314+02.38 LT.
10' X 7', SKEW 0°
EXTEND 11'-3"