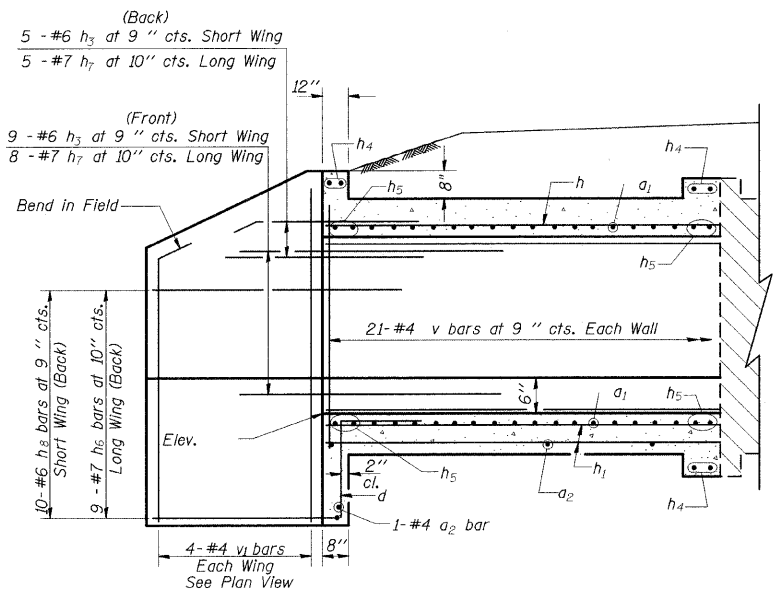
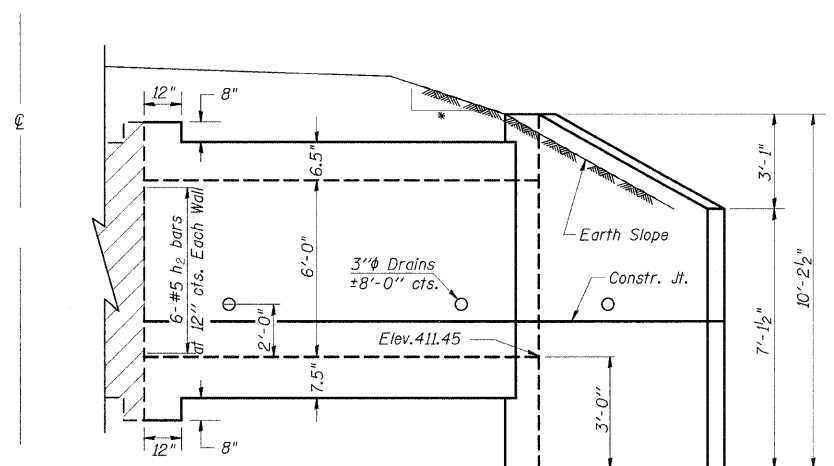


STATE OF ILLINOIS
DEPARTMENT OF TRANSPORTATION

F.A.S. RTE	SECTION	COUNTY	TOTAL SHEETS	SHEET NO
932	(8,9,11)W,RS-1		401	167
STA.		TO STA.		
FED. ROAD DIST. NO.		ILLINOIS	FED. AID PROJECT	
JOHNSON/POPE				

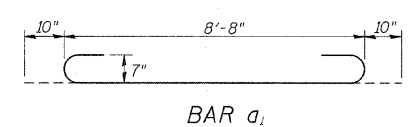
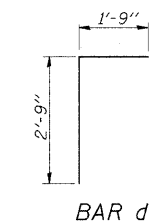
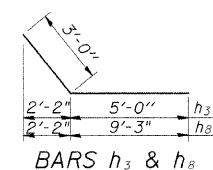


HALF LONG. SECTION



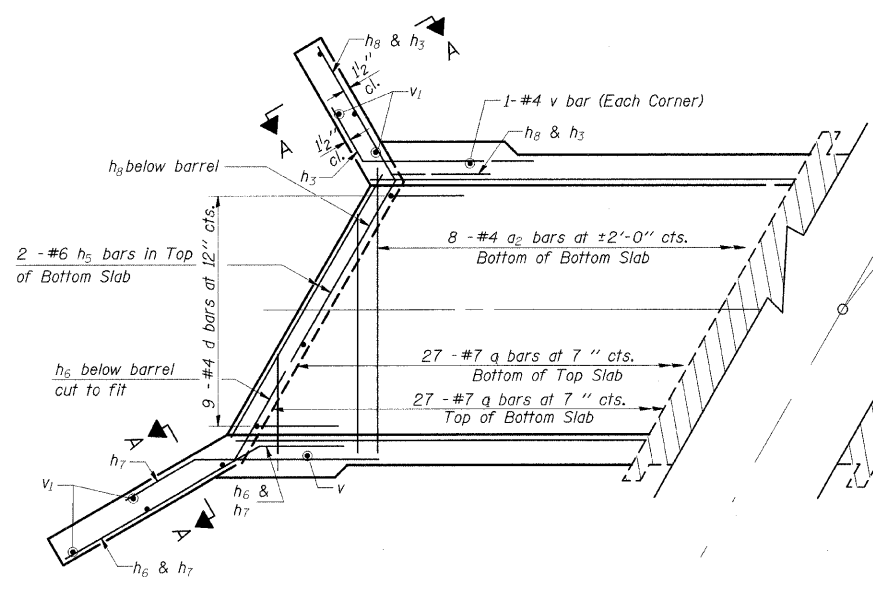
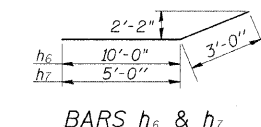
HALF ELEVATION

- 4:1 TO CLEAR ZONE
- 3:1 AFTER CLEAR ZONE

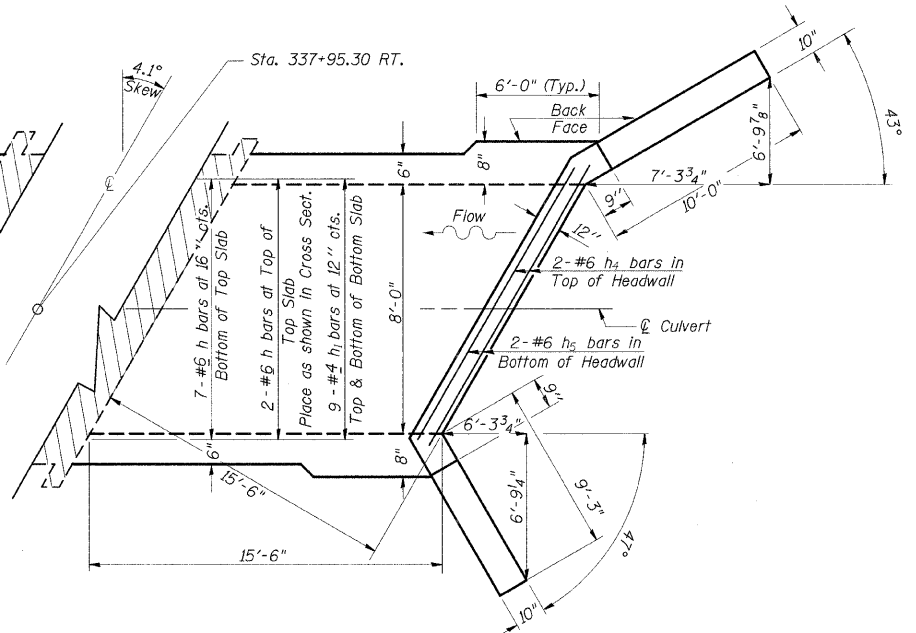


DESIGN STRESSES
 $f_y = 60,000$ psi
 $f'_c = 3,500$ psi

LOADING HS 20-44 & ALT.



SHOWING REINFORCEMENT

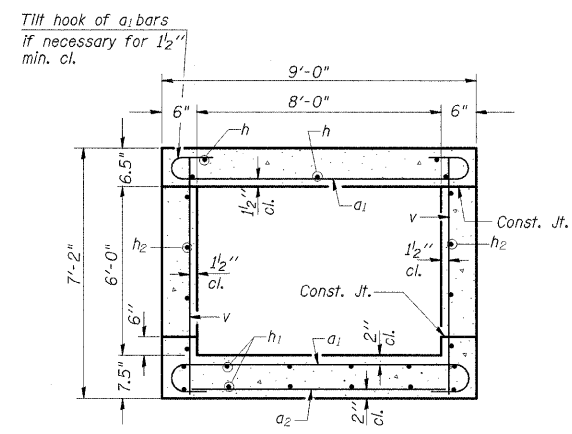


SHOWING OUTLINES

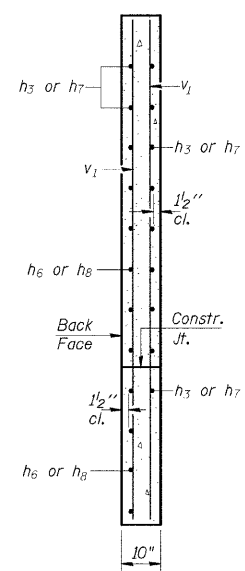
PLAN

NOTES

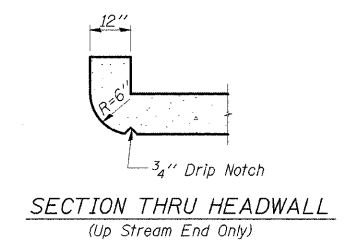
- A distance of half the length of the wingwall but not less than six feet of the barrel shall be poured monolithically with the wingwalls.
- Reinforcement Bars shall conform to the requirements of AASHTO M-31, M-42 or M-53, Grade 60.
- Bars indicated thus 12 x 4-#5 etc. indicates 12 lines of bars with 4 lengths per line.
- All construction joints shall be bonded.



SECTION THRU BARREL



SECTION A-A



SECTION THRU HEADWALL
(Up Stream End Only)

BILL OF MATERIAL

Bar	No.	Size	Length	Shape	
a_1	54	#7	10'-4"	U	
a_2	9	#4	8'-3"	—	
d	9	#4	4'-6"	—	
h	9	#6	15'-3"	—	
h_1	18	#4	15'-3"	—	
h_2	12	#5	15'-3"	—	
h_3	14	#6	8'-0"	—	
h_4	6	#6	8'-0"	—	
h_5	8	#6	8'-0"	—	
h_6	9	#7	13'-0"	—	
h_7	13	#7	8'-0"	—	
h_8	10	#6	12'-3"	—	
v	44	#4	6'-10"	—	
v_1	8	#4	6'-9"	—	
Expansion Bolts $\frac{3}{4}$ "				Each	18
Concrete Box Culverts				Cu. Yd.	15.9
Reinforcement Bars				Pound	3010

PRECAST OPTION NOT ALLOWED

ILLINOIS DEPARTMENT OF TRANSPORTATION
BOX CULVERT EXTENSION
STATION 337+95.30 RT.
8' X 6', SKEW 4.1° RT. AH.
EXTEND 15'-6''