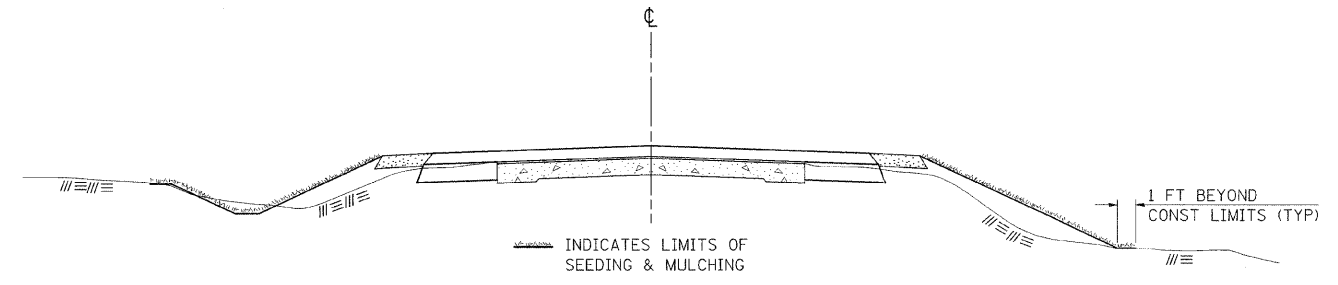


F.A.S. RTE	SECTION	COUNTY	TOTAL SHEETS	SHEET NO.
932	(8,9,11)W,RS-1	*	401	197
STA. _____		TO STA. _____		
FED. ROAD DIST. NO. _____		ILLINOIS	FED. AID PROJECT	
• JOHNSON & POPE				

SEEDING & MULCHING



GENERAL NOTES

IN GENERAL, ALL EARTH SURFACES DISTURBED DURING CONSTRUCTION OPERATIONS SHALL BE SEEDDED AND MULCHED UPON COMPLETION OF ALL GRADING OPERATIONS.

FERTILIZER NUTRIENTS AND LIMESTONE SHALL BE APPLIED TO ALL SEEDDED AREAS.

THE RATES OF APPLICATION OF FERTILIZER, MULCH AND LIMESTONE SHALL BE AS SPECIFIED IN THE SPECIAL PROVISIONS.

SECTIONS 250 AND 251 OF THE STANDARD SPECIFICATIONS SHALL GOVERN THIS WORK EXCEPT AS SPECIFIED HEREIN OR AS NOTED IN THE SPECIAL PROVISIONS.

REVISIONS	
REDRAWN	2-15-89
REVISOR	8-15-94
REVISOR	6-3-99

STD. 9-12

INLETS SPECIAL TYPE 1

CLASS SI CONCRETE SHALL BE USED THROUGHOUT.

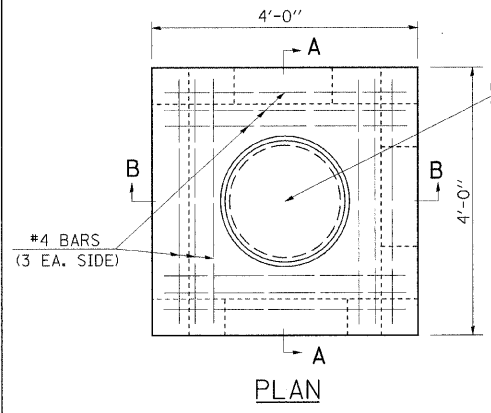
THE INLET SHALL BE PAID FOR AT THE CONTRACT UNIT PRICE FOR **INLETS SPECIAL TYPE 1**, WHICH PRICE SHALL INCLUDE THE COST OF THE CAST IRON FRAME, SPECIAL TYPE 2, WITH TYPE 1 CLOSED LID AND REINFORCEMENT BARS AND SHALL BE PAYMENT IN FULL FOR FURNISHING ALL MATERIAL AND FOR CONSTRUCTING THE WORK COMPLETE IN PLACE.

THE INLET MAY BE PRECAST OR MAY BE CAST IN PLACE. JOINTS AND STEEL BARS IN THE WALLS SHALL BE OMITTED IF CAST IN PLACE. IF PRECAST, THE JOINTS AND STEEL BARS SHALL BE PLACED AS SHOWN.

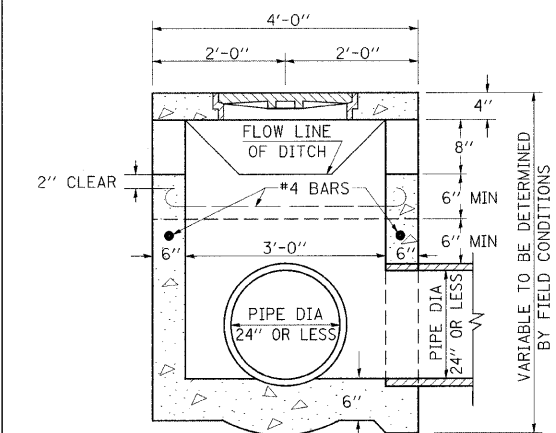
THE DEPTH OF THE INLET SHALL BE VARIED TO FIT FIELD CONDITIONS.

THE LID MAY BE CAST SEPARATELY OR MONOLITHICALLY WITH THE UPPER SECTION OF THE INLET.

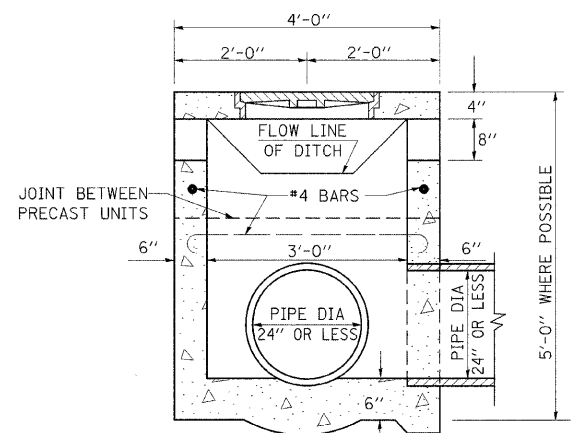
**THE GALVANIZED IRON STEPS AS DETAILED HEREON ARE TYPICAL. STEPS OF OTHER DESIGN AND MATERIAL THAT WILL CONFORM TO THE MINIMUM REQUIREMENTS OF THE STEPS SHOWN, MAY BE USED WHEN APPROVED BY THE ENGINEER.



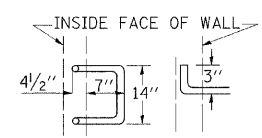
PLAN



SECTION B-B



SECTION A-A



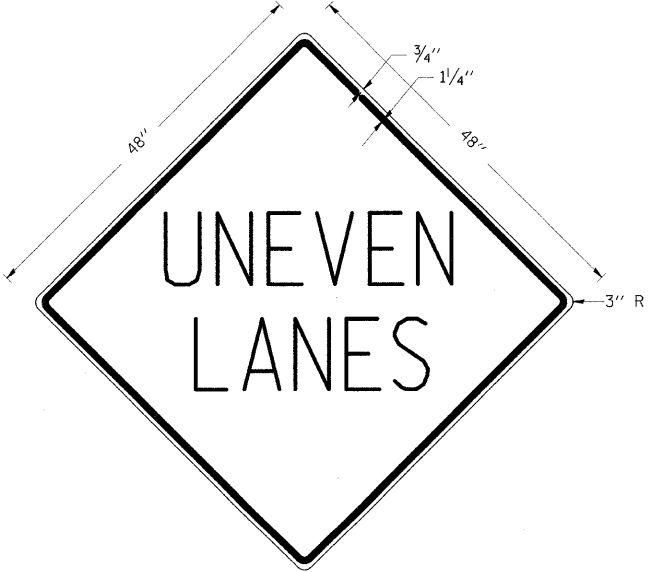
1" Ø GALV. IRON STEPS ** SPACED 12" TO 18" C-C. USE WHEN INLET IS OVER 4' DEEP.

REVISIONS	
REDRAWN	8-15-89
REVISOR	8-15-94
REVISOR	

STD. 9-2

UNEVEN LANES SIGN

W8-11 (48" x 48")



COLORS:
 LEGEND AND BORDER - BLACK NON-REFLECTORIZED
 BACKGROUND - ORANGE REFLECTORIZED

NOTE: PRIOR TO ALLOWING TRAFFIC ON ANY PORTION OF THE ROADWAY THAT HAS BEEN COLDMILLED OR BEFORE RESURFACING OPERATIONS BEGIN, THE CONTRACTOR SHALL HAVE ERECTED "UNEVEN PAVEMENT" SIGNS THAT CONFORM TO THE ABOVE DETAILS. A MINIMUM OF ONE SIGN AT EACH END OF THE IMPROVEMENT WILL BE REQUIRED. THE CONTRACTOR SHALL MAINTAIN THE "UNEVEN PAVEMENT" SIGNS UNTIL THE RESURFACING OPERATIONS ARE COMPLETED.

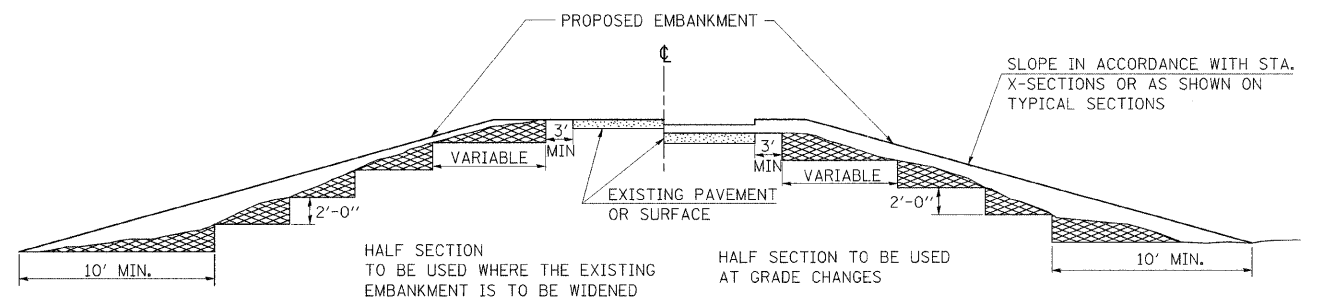
IF AT ANY TIME THE SIGNS ARE IN PLACE BUT NOT APPLICABLE, THEY SHALL BE TURNED FROM THE VIEW OF MOTORISTS OR COVERED AS DIRECTED BY THE ENGINEER.

THE COST OF FURNISHING, ERECTING, MAINTAINING, AND REMOVING THE REQUIRED SIGNS SHALL BE INCLUDED IN THE CONTRACT.

REVISIONS	
DRAWN	2-15-89
REVISOR	4-6-89
REDESIGNED	7-23-04
REVISOR	

STD. 9-41

TYPICAL CROSS SECTION SHOWING STEP CONSTRUCTION ON EXISTING FILL



HALF SECTION TO BE USED WHERE THE EXISTING EMBANKMENT IS TO BE WIDENED

HALF SECTION TO BE USED AT GRADE CHANGES

MATERIAL TO BE REMOVED AND REPLACED IN THE EMBANKMENT IN ACCORDANCE WITH ART. 205.04 OF THE STANDARD SPECIFICATION. COST TO BE INCLUDED IN THE VARIOUS ITEMS OF EXCAVATION AND NO ADDITIONAL COMPENSATION WILL BE ALLOWED BECAUSE OF THIS WORK.

REVISIONS	
REDRAWN	2-15-89
REVISOR	8-15-94
CHECKED	6-3-99
REVISOR	

STD. 9-16