

F.A.S. RTE.	SECTION	COUNTY	TOTAL SHEETS	SHEET NO.
932	(6,9,11)W,RS-1	*	401	261
STA. 189+00.00		TO STA. 191+76.00		
FED. ROAD DIST. NO.		ILLINOIS FED. AID PROJECT		
* JOHNSON & POPE				

BY	DATE

FINAL SURVEYED	PLOTTED

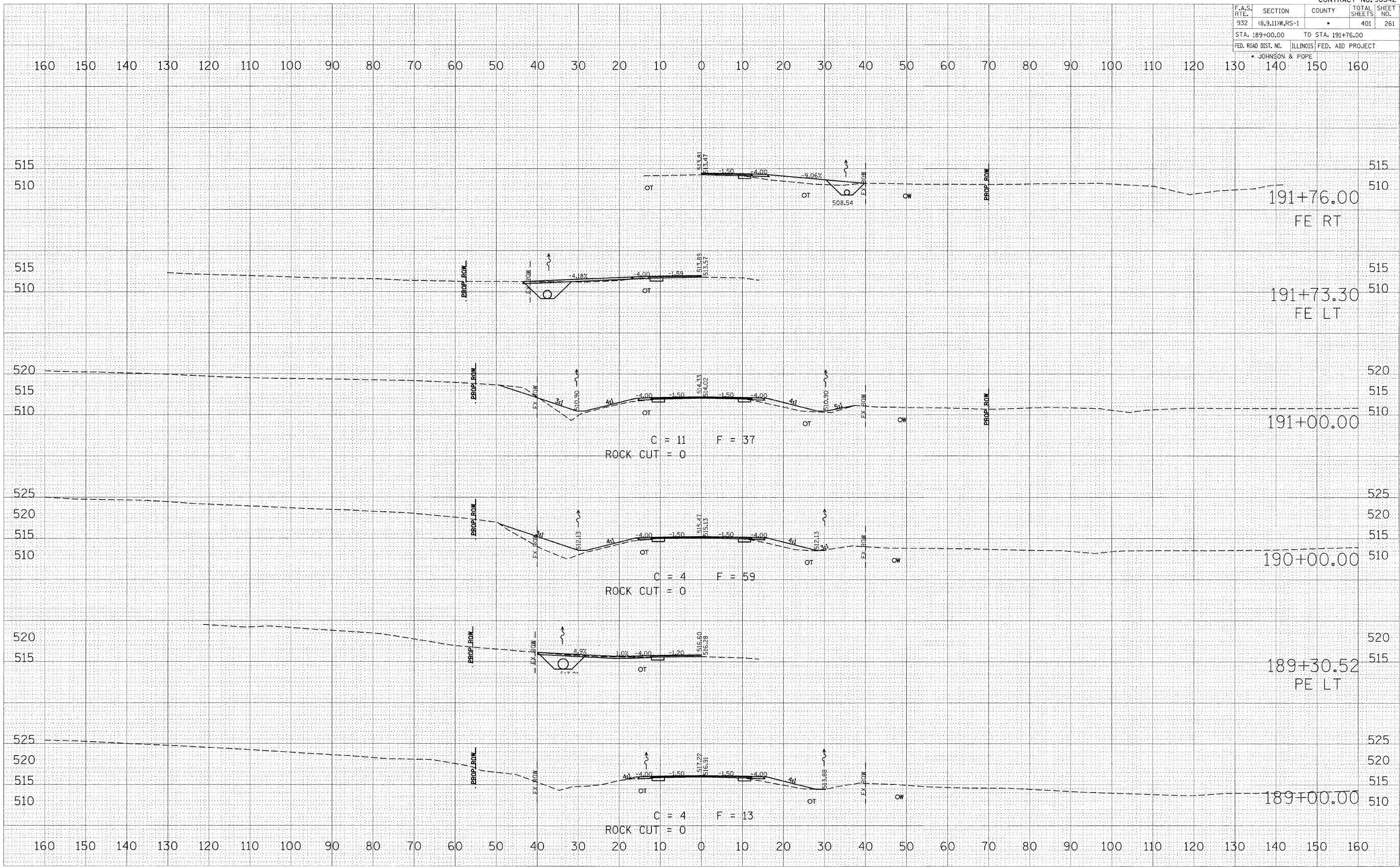
NOTE BOOK	AREAS CHECKED

BY	DATE

ORIGINAL SURVEYED	PLOTTED

NOTE BOOK	AREAS CHECKED

PLOT DATE = DATE*
 PLOT SCALE = SCALE*
 USER NAME = USER*



160 150 140 130 120 110 100 90 80 70 60 50 40 30 20 10 0 10 20 30 40 50 60 70 80 90 100 110 120 130 140 150 160