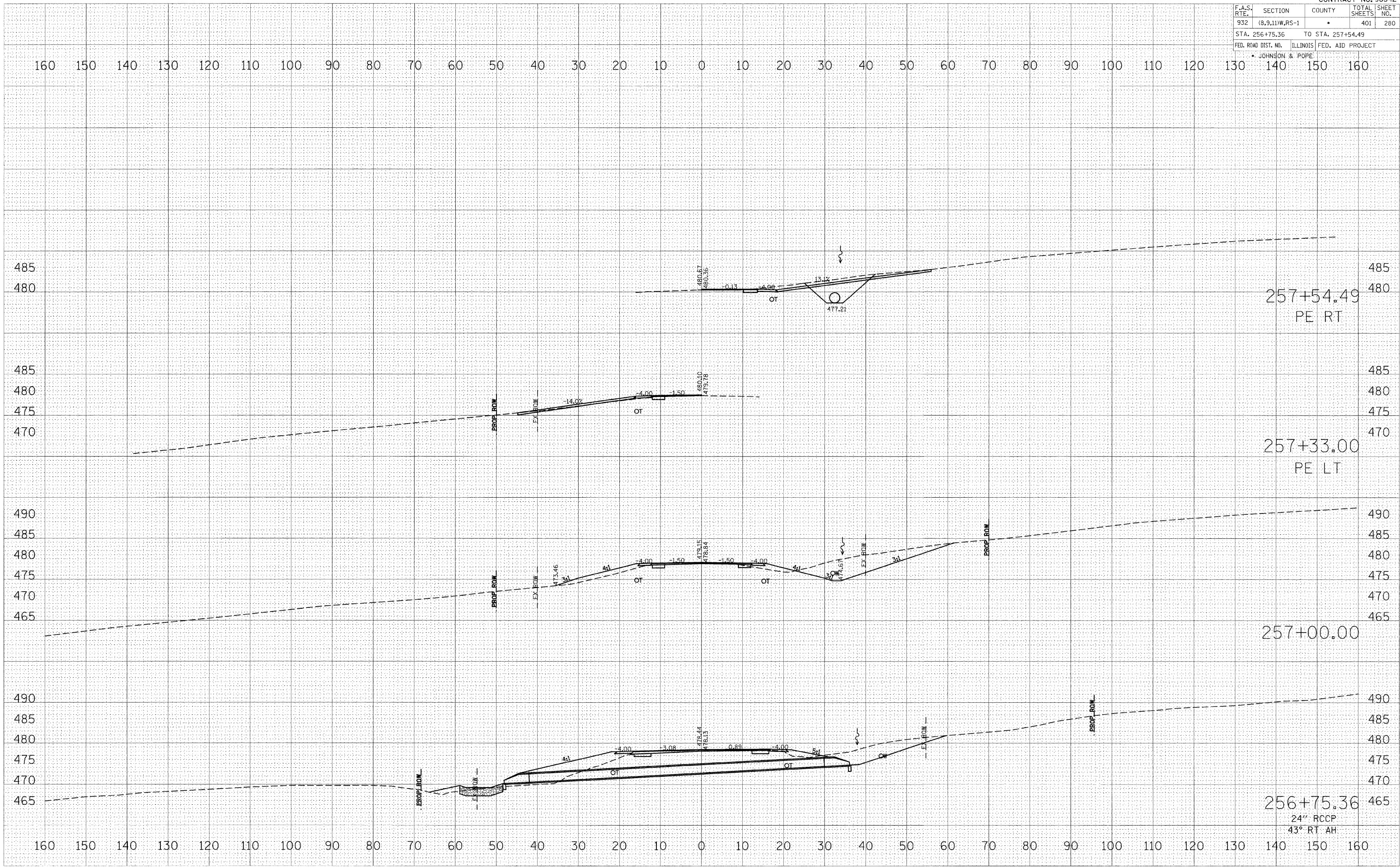


F.A.S. RTE.	SECTION	COUNTY	TOTAL SHEETS	SHEET NO.
932	(8,9,11)W,RS-1	•	401	280
STA. 256+75.36		TO STA. 257+54.49		
FED. ROAD DIST. NO.		ILLINOIS FED. AID PROJECT		
• JOHNSON & POPE				

DATE	
BY	
FINAL SURVEYED	
SHEET PLOTTED	
NOTE BOOK	
NO.	
AREAS CHECKED	

DATE	
BY	
ORIGINAL SURVEYED	
SHEET PLOTTED	
NOTE BOOK	
NO.	
AREAS CHECKED	

PLOT DATE = \$DATE\$  
 PLOT SCALE = \$SCALE\$  
 USER NAME = \$USER\$



257+54.49  
PE RT

257+33.00  
PE LT

257+00.00

256+75.36  
24" RCCP  
43° RT AH