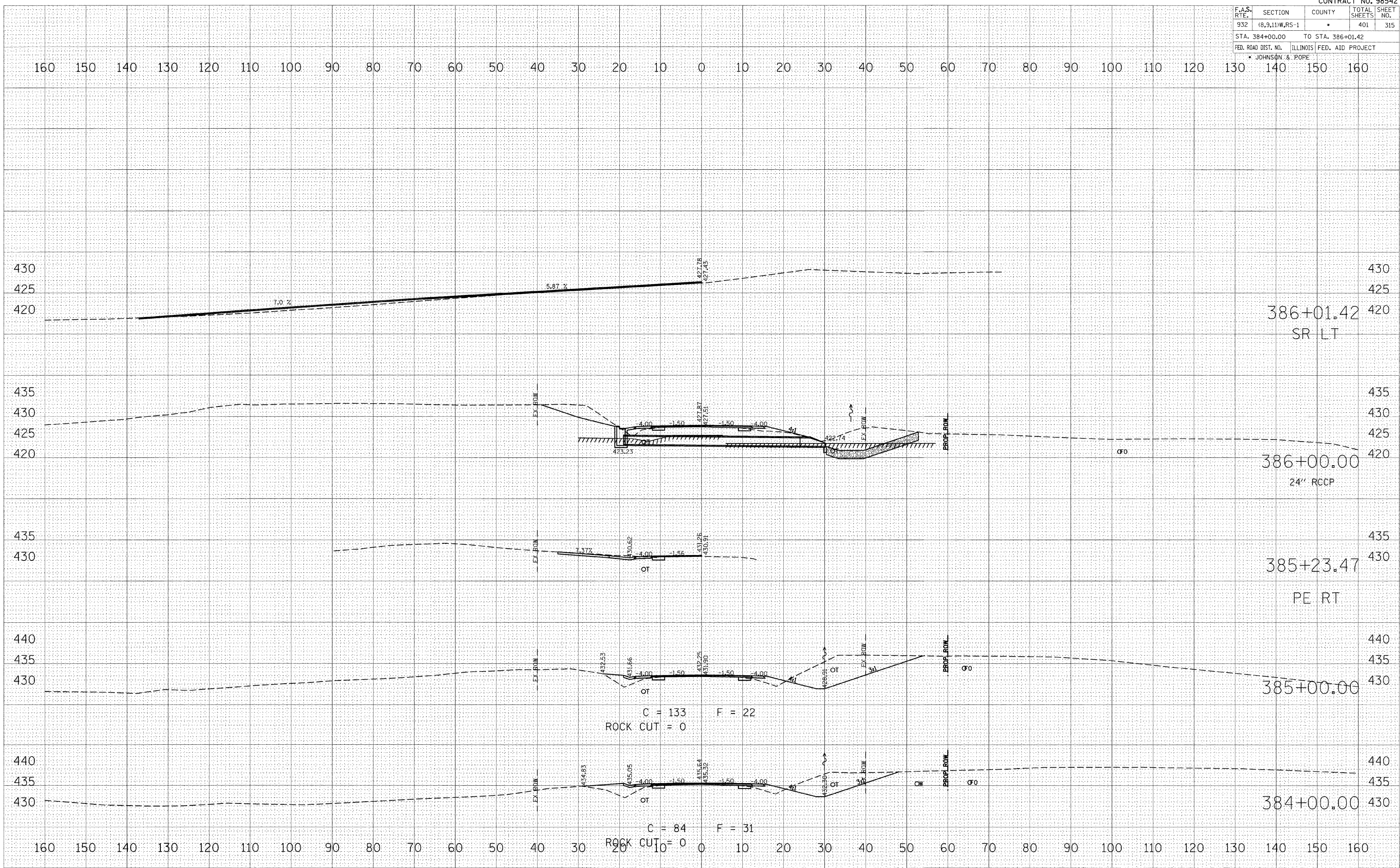


F.A.S. RTE.	SECTION	COUNTY	TOTAL SHEETS	SHEET NO.
932	(6,9,11)W,RS-1	*	401	315
STA. 384+00.00		TO STA. 386+01.42		
FED. ROAD DIST. NO.		ILLINOIS FED. AID PROJECT		
* JOHNSON & POPE				

DATE	
BY	
NO.	
ORIGINAL SURVEYED	
SURVEY PLOTTED	
TEMPERATURE	
NOTE BOOK	
AREAS CHECKED	

DATE	
BY	
NO.	
ORIGINAL SURVEYED	
SURVEY PLOTTED	
TEMPERATURE	
NOTE BOOK	
AREAS CHECKED	

DATE	
BY	
NO.	
ORIGINAL SURVEYED	
SURVEY PLOTTED	
TEMPERATURE	
NOTE BOOK	
AREAS CHECKED	



C = 133 F = 22  
ROCK CUT = 0

C = 84 F = 31  
ROCK CUT = 0