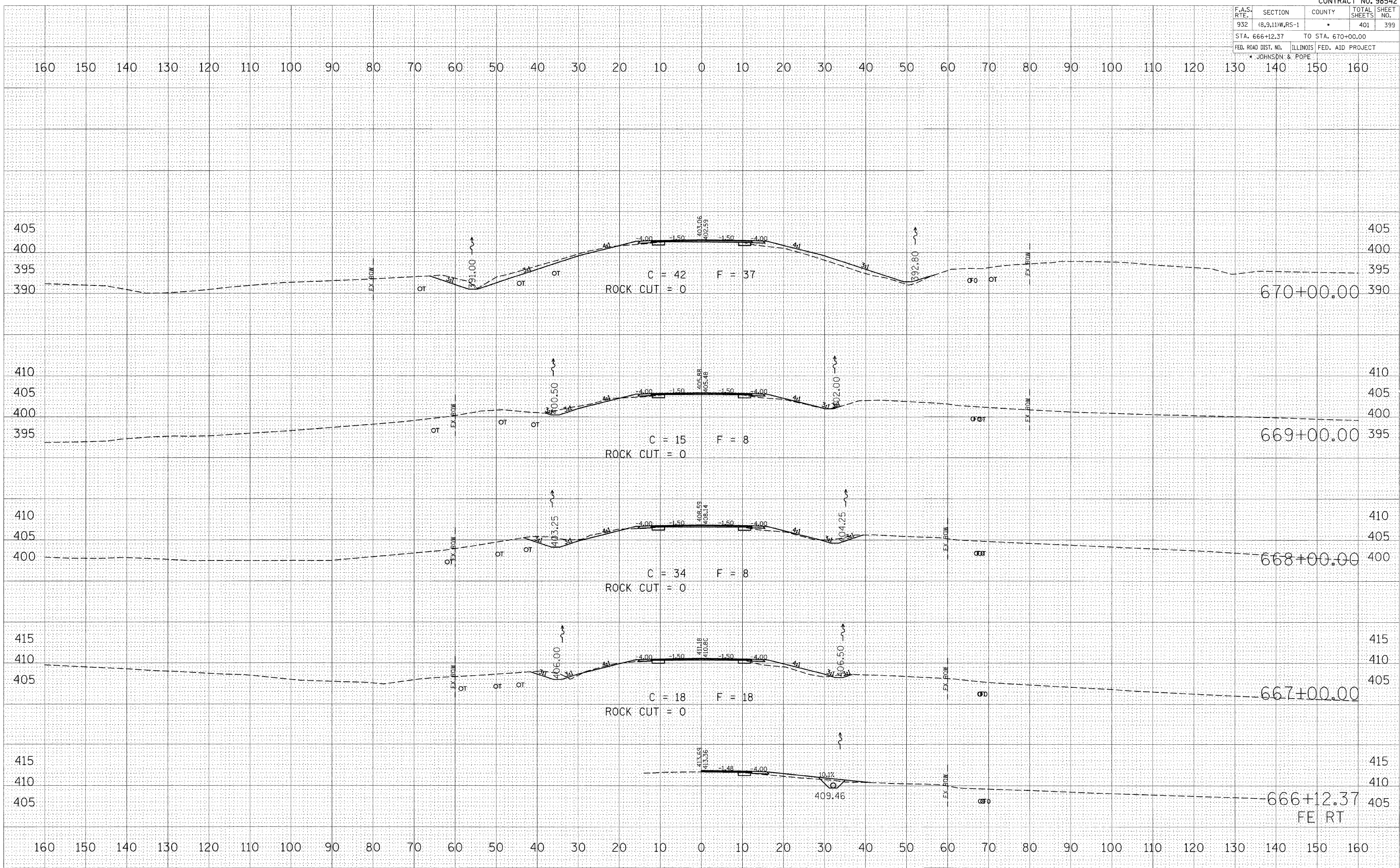


F.A.S. RTE.	SECTION	COUNTY	TOTAL SHEETS	SHEET NO.
932	(6,9,11)W,RS-1	*	401	399
STA. 666+12.37		TO STA. 670+00.00		
FED. ROAD DIST. NO.		ILLINOIS FED. AID PROJECT		
* JOHNSON & POPE				



BY	DATE

FINAL SURVEY	SURVEYED	PLOTTED	TEMPLATE	NO.

BY	DATE

ORIGINAL SURVEY	SURVEYED	PLOTTED	TEMPLATE	NO.

PLOT DATE = #DATE#
 PLOT SCALE = #SCALE#
 USER NAME = #USER#