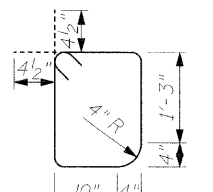
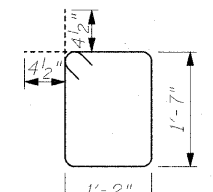
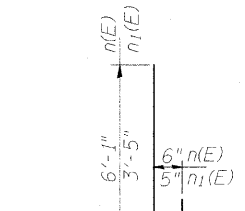
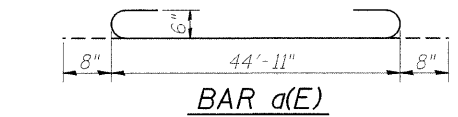
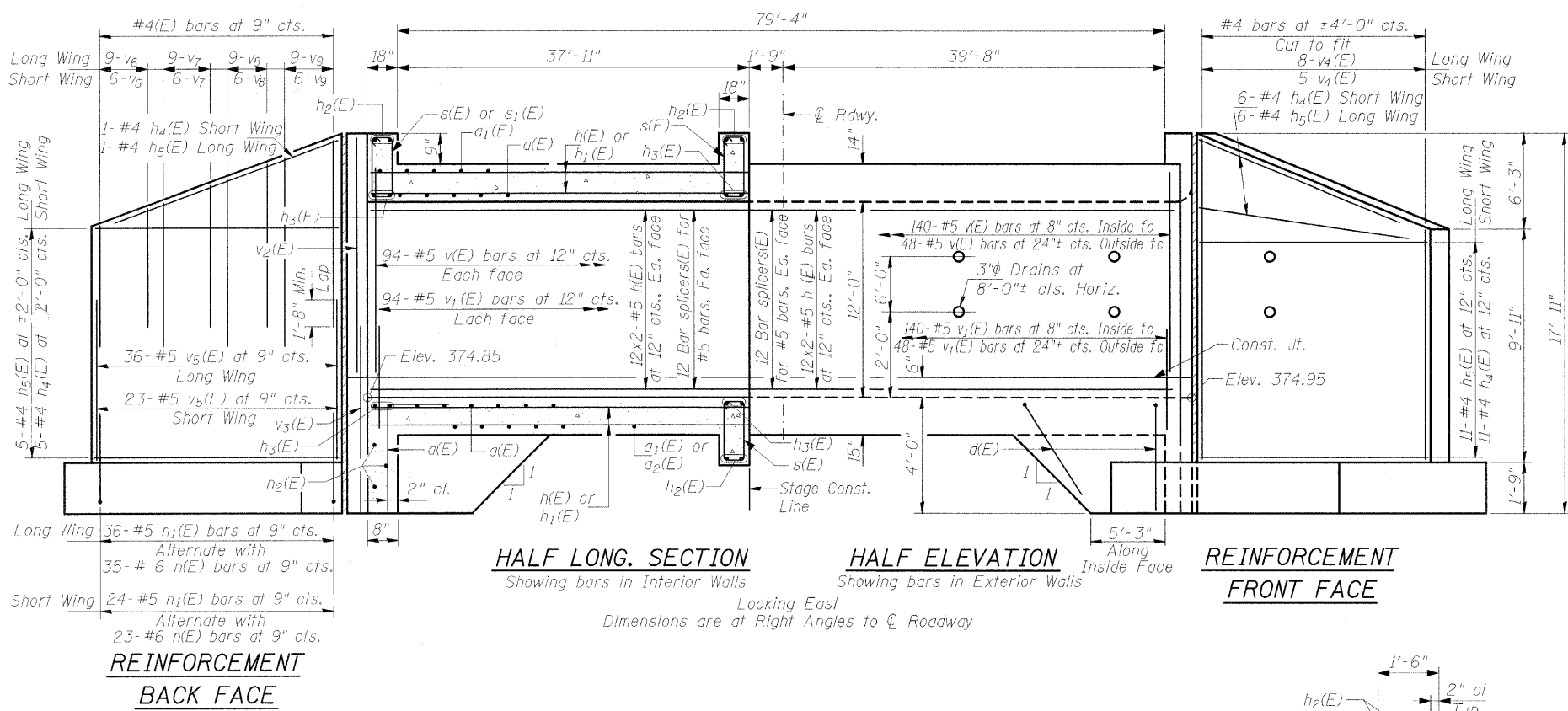


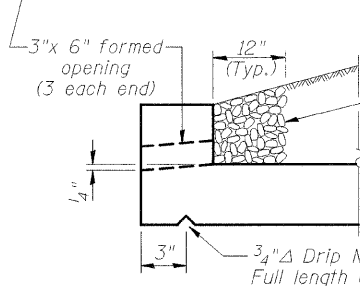
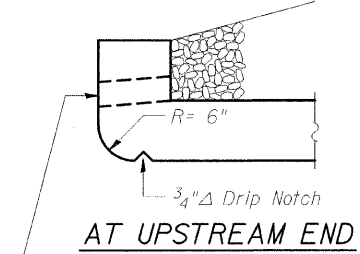
STATE OF ILLINOIS
DEPARTMENT OF TRANSPORTATION

ROUTE NO.	SECTION	COUNTY	TOTAL SHEETS	SHEET NO.	SHEET NO. 7 11 SHEETS
FAP 331	5B-3	JACKSON	25	21	
FED. ROAD DIST. NO. 7		ILLINOIS	FED. AID PROJECT		CONTRACT NO. 98566



MIN. BAR LAP

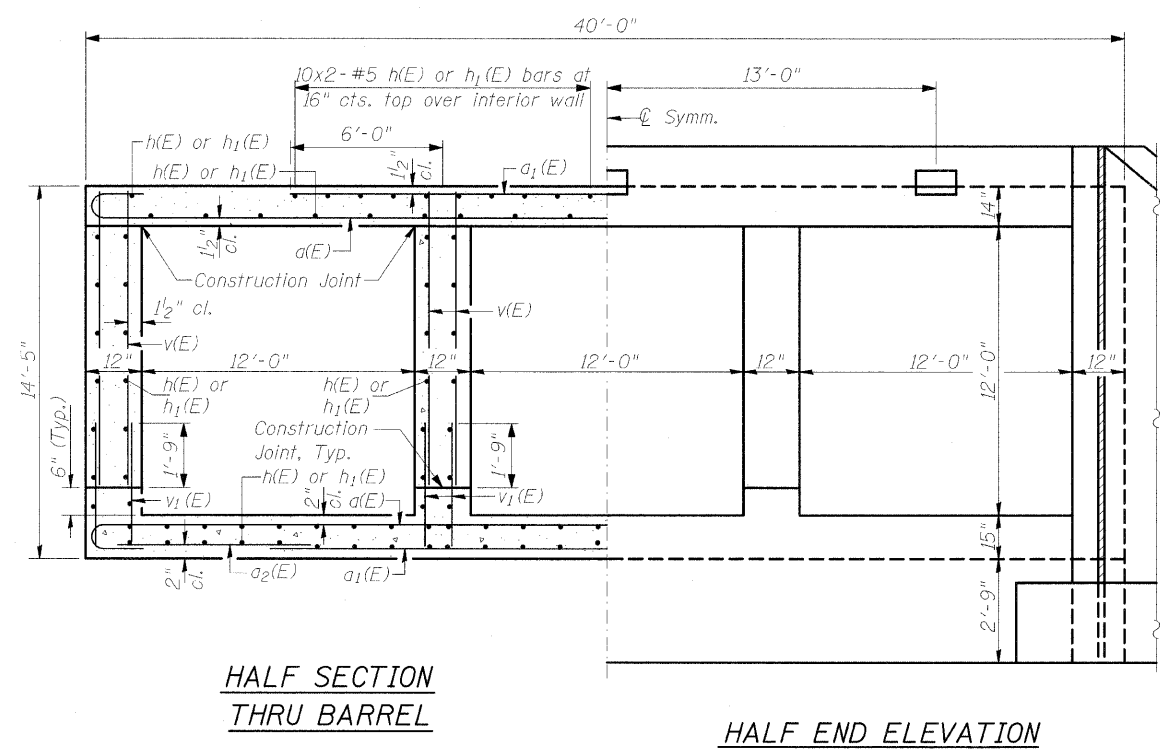
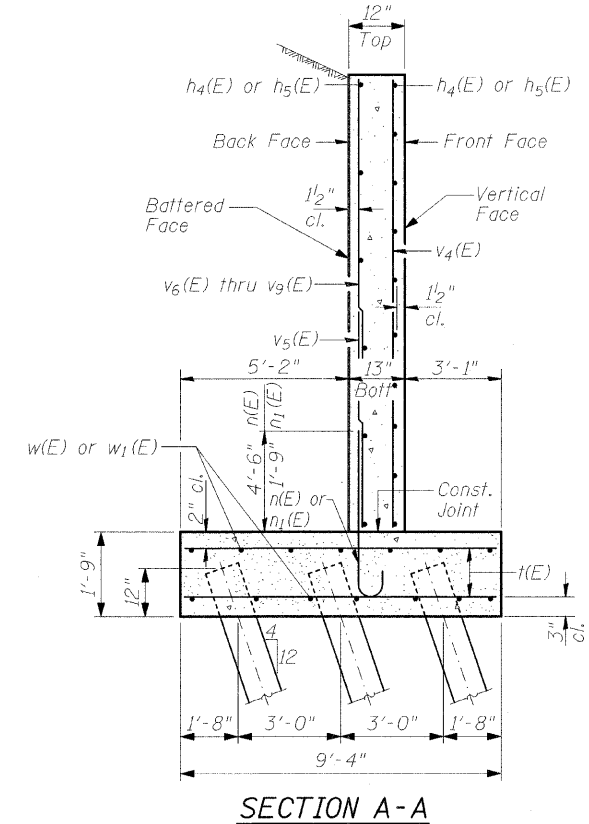
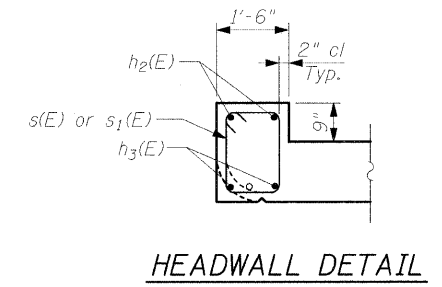
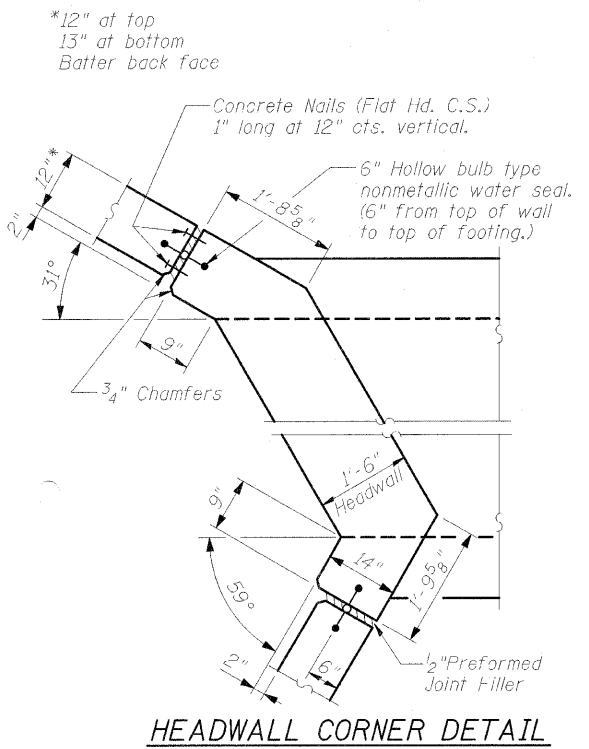
Barrel	Wingwalls
#4 - 1'-4"	#4 - 1'-8"
#5 - 1'-8"	#5 - 2'-2"
#6 - 2'-0"	#6 - 2'-7"
#7 - 2'-9"	



Coarse aggregate, CA-7, full length of both headwalls. To be placed by Grading Contractor. Cost included with Concrete Box Culverts. (Typical)

BILL OF MATERIAL

Bar	No.	Size	Length	Shape
d(E)	372	#6	46'-3"	U
a ₁ (E)	372	#6	26'-9"	U
a ₂ (E)	96	#4	8'-8"	U
d(E)	108	#4	5'-6"	U
h(E)	558	#5	23'-1"	U
h ₁ (E)	558	#5	25'-1"	U
h ₂ (E)	28	#6	23'-6"	U
h ₃ (E)	24	#7	23'-6"	U
h ₄ (E)	46	#4	17'-0"	U
h ₅ (E)	46	#4	27'-0"	U
n(E)	116	#6	6'-9"	U
n ₁ (E)	120	#5	4'-0"	U
s(E)	135	#4	6'-3"	U
s ₁ (E)	45	#4	6'-1"	U
h(E)	200	#6	9'-1"	U
v(E)	656	#5	12'-6"	U
v ₁ (E)	656	#5	3'-4"	U
v ₂ (E)	8	#5	13'-3"	U
v ₃ (E)	8	#5	6'-8"	U
v ₄ (E)	26	#4	15'-9"	U
v ₅ (E)	118	#5	7'-3"	U
v ₆ (E)	30	#4	5'-11"	U
v ₇ (E)	30	#4	7'-6"	U
v ₈ (E)	30	#4	9'-1"	U
v ₉ (E)	30	#4	10'-7"	U
w(E)	28	#5	26'-10"	U
w ₁ (E)	28	#5	16'-10"	U
Concrete Box Culverts	Cu. Yd.		626.6	
Reinforcement Bars, Epoxy Coated	Pound		92530	
Bar Splicers(F)	Each		279	



DESIGNED	TML
CHECKED	GLH
DRAWN	RJN
CHECKED	GLH
DB-T-L	4-30-99

Notes: Reinforcement bars designated (E) shall be epoxy coated.
Bars indicated thus 12x4-#5 etc. indicates 12 lines of bars with 4 lengths per line.

CULVERT DETAILS
ILLINOIS ROUTE 13WB OVER
PILES FORK CREEK
FAP ROUTE 331 - SEC. 5B-3
JACKSON COUNTY
STATION 86+40.00
STRUCTURE NO. 039-2026

12/06/2005