

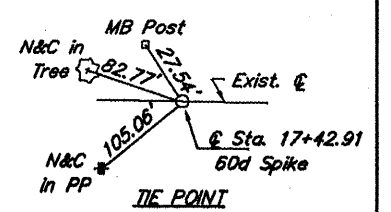
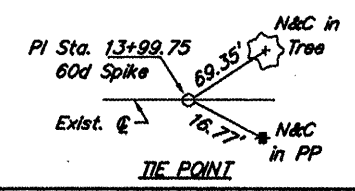
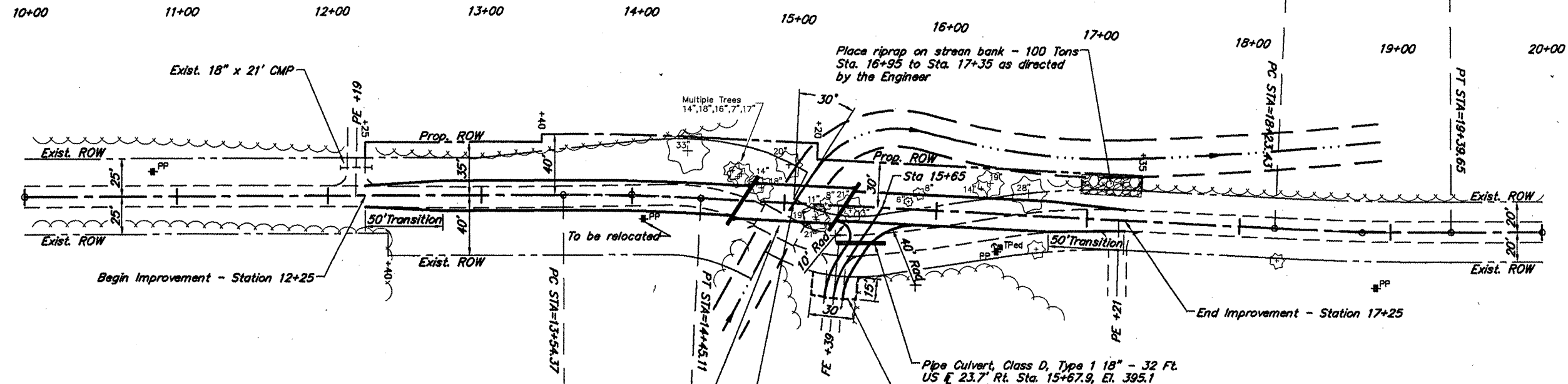
B.M. - RR Spike in Power Pole
15' Rt. Sta. 14+08
Assumed Elev. 395.00

Existing Structure - Timber deck on
steel stringers with closed concrete
abutments. ±16' W x 30' L
Deck Elev. 395.32

CURVE DATA
PI Sta = 13+99.75
 $\Delta = 3^{\circ}10'47''$ $T = 45.38'$
 $D = 3^{\circ}30'15''$ $L = 90.74'$
 $R = 1,635.06'$ $E = 0.63'$
 $S.E. = 0.025'/ft.$
Attain Sta. 13+09.7 to Sta. 13+76.7
Remove Sta. 14+04.6 to Sta. 14+71.6

Tree Removal Areas: The limits of the tree removal shall be between a line 10 feet left or right of the existing centerline of the roadway and the proposed ROW on the left and the existing ROW on the right between the following Stations.
Lt. Sta. 12+25 to Sta. 17+25 0.37 Ac.
Rt. Sta. 14+45 to Sta. 14+80 0.03 Ac.
Total 0.40 Ac.

| ROUTE | SECTION | COUNTY | TOTAL SHEETS | SHEET NO. |
|--------------------------|----------------|--------|--------------------|-----------|
| TR 265 | 04-01181-00-BR | UNION | 10 | 2 |
| PROJECT NO. BROS-181(25) | | | CONTRACT NO. 99316 | |



SCALES:
1" = 80' HOR
1" = 10' VER

CURVE DATA
PI Sta = 18+81.55
 $\Delta = 3^{\circ}00'16''$ $T = 58.12'$
 $D = 2^{\circ}35'07''$ $L = 116.22'$
 $R = 2,216.32'$ $E = 0.76'$

Station 15+06 - Single span precast prestressed concrete deck beam bridge 68.88' bk-bk Abutments, Skewed 30° Lt. Forward

