

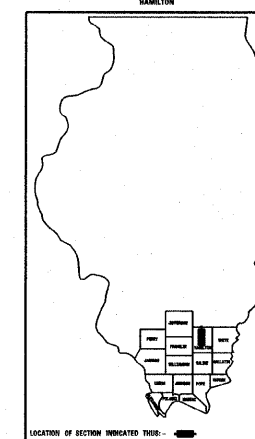
**STATE OF ILLINOIS
DEPARTMENT OF TRANSPORTATION
DIVISION OF HIGHWAYS**

**PLANS FOR PROPOSED
HIGHWAY BRIDGE PROGRAM**

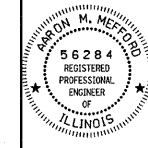
**PROJECT NO. BROS-065 (46) JOB NO. C-99-528-08
SECTION 08-09113-00-BR
WHITE OAK CREEK
HAMILTON COUNTY
T.R. 234**

PROPOSED STRUCTURE NO. 033-3310

T.R.	SECTION	COUNTY	TOTAL SHEETS	SHEET NO.	
234	08-09113-00-BR	HAMILTON	13	1	323 W. 3RD ST. P.O. BOX 160 MT. CARMEL, IL 62863
FED. ROAD DIST. NO. 9 ILLINOIS		FED. AID PROJECT			PHONE: (618)-262-8651 FAX: (618)-263-3327
PROJECT * C-99-528-08		WHITE OAK CREEK			405 W. STATE ST. SUITE 1 PRINCETON, IN 47670 PHONE: (812)-386-7611 FAX: (812)-385-2012
JOB * C-99-528-08 LEC JOB * H081017M					



PROFESSIONAL DESIGN FIRM
LAND SURVEY & PROFESSIONAL ENGINEERING CORPORATION
184-00887
(82-032435)(35-002769)



AARON M. MEFFORD
NAME
SIGNATURE
8-26-08
DATE
11-30-09 EXPIRES

INDEX OF SHEETS

SHEET NO. DESCRIPTION

- 1. COVER SHEET & SUMMARY OF QUANTITIES
- 2. PLAN AND PROFILE & TYPICAL SECTIONS
- 3.-4. STATION CROSS SECTIONS
- 5.-11. BRIDGE PLANS
- 12.-13. BORINGS

HIGHWAY STANDARDS:

- 000001-05 STANDARD SYMBOLS, ABBREVIATIONS AND PATTERNS
- 280001-04 TEMPORARY EROSION CONTROL SYSTEMS
- 515001-02 NAME PLATE FOR BRIDGES
- 701901 TRAFFIC CONTROL DEVICES
- BLR 21-7 TYPICAL APPLICATION OF TRAFFIC CONTROL DEVICES FOR CONSTRUCTION ON RURAL LOCAL HIGHWAYS
- BLR 22-5 TYPICAL APPLICATION OF TRAFFIC CONTROL DEVICES FOR CONSTRUCTION ON RURAL LOCAL HIGHWAYS (TWO-LANE TWO-WAY RURAL TRAFFIC) (ROAD CLOSED TO THRU TRAFFIC)

SUMMARY OF QUANTITIES

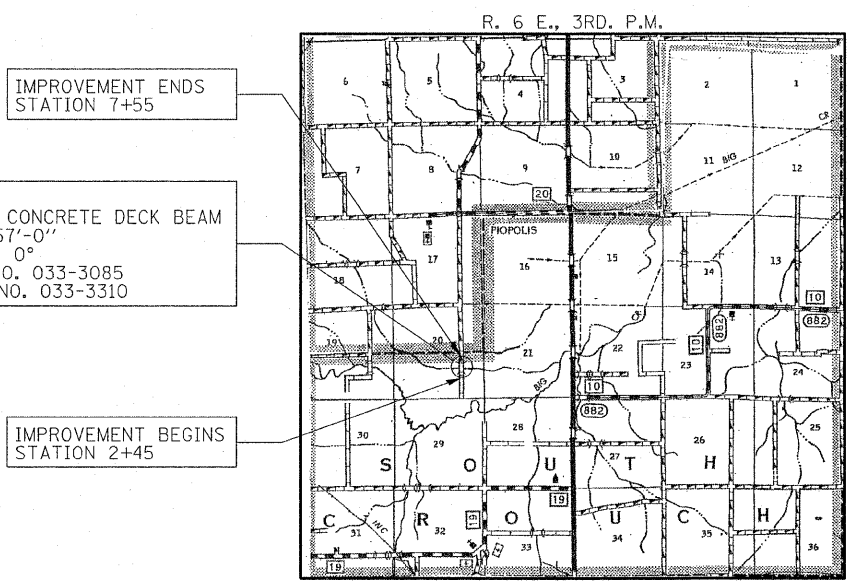
CODE NO.	ITEM	UNIT	QUANTITY
20200100	EARTH EXCAVATION	CU YD	29
20300100	CHANNEL EXCAVATION	CU YD	110
20400800	FURNISHED EXCAVATION	CU YD	480
25001000	SEEDING, CLASS 2 (SPECIAL)	ACRE	0.2
28100807	STONE DUMPED RIPRAP, CLASS A4	TON	150
40200800	AGGREGATE SURFACE COURSE, TYPE B	TON	340
50100100	REMOVAL OF EXISTING STRUCTURES	EACH	1
50300225	CONCRETE STRUCTURES	CU YD	23.6
50300280	CONCRETE ENCASEMENT	CU YD	2.8
50400505	PRECAST PRESTRESSED CONCRETE DECK BEAMS (27" DEPTH)	SO FT	1,368
50800105	REINFORCEMENT BARS	POUND	2,740
* 50900205	STEEL RAILING, TYPE S1	FOOT	109
51201400	FURNISHING STEEL PILES HP10X42	FOOT	428
51202305	DRIVING PILES	FOOT	428
51500100	NAME PLATES	EACH	1
54200220	PIPE CULVERTS, CLASS D TYPE 1 15"	FOOT	40
67100100	MOBILIZATION	L SUM	1
28001000	AGGREGATE (EROSION CONTROL)	TON	13

* SPECIALTY ITEMS

CONTRACT NO. 99343

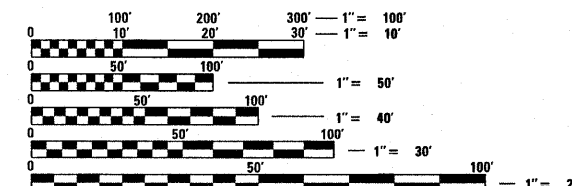
HAMILTON COUNTY

X081-2A
QUANTITY



LOCATION MAP

APPROXIMATE SCALE: 0 1 MILE
NET LENGTH OF SECTION = 510 FEET = 0.097 MILES



FULL SIZE PLANS HAVE BEEN PREPARED USING STANDARD ENGINEERING SCALES. REDUCED SIZED PLANS WILL NOT CONFORM TO STANDARD SCALES. IN MAKING MEASUREMENTS ON REDUCED PLANS, THE ABOVE SCALES MAY BE USED.

ILLINOIS DEPARTMENT OF TRANSPORTATION

APPROVED August 26 20 08
Kimi Phillips
COUNTY ENGINEER

PASSED SEPT. 2 20 08
Dennis W. Hillman
DISTRICT NINE ENGINEER OF LOCAL ROADS & STREETS

Releasing For Bid Based on Limited Review
Sept 3 20 08
Mary C. Linnick
DEPUTY DIRECTOR OF HIGHWAYS
REGION FIVE ENGINEER
STATE OF ILLINOIS
DEPARTMENT OF TRANSPORTATION

SOUTH CROUCH TOWNSHIP
OVER WHITE OAK CREEK
HAMILTON COUNTY, ILLINOIS

HAMPTON, LENZINI & RENWICK, INC.
CIVIL & STRUCTURAL ENGINEERS
LAND SURVEYORS

3085 STEVENSON DRIVE, SUITE 201
SPRINGFIELD, ILLINOIS 62703
(217) 546-3400

ELGIN • SPRINGFIELD

PROJECT NUMBER: 08.0102.130 DATE: 08/25/08

SHEET TITLE:

TITLE SHEET

SCALE: VARIES

BY: AMM

DATE: 7/10/08

REV:

1 OF 13 SHEETS

SHEET NO. 1

SECTION 08-09113-00-BR