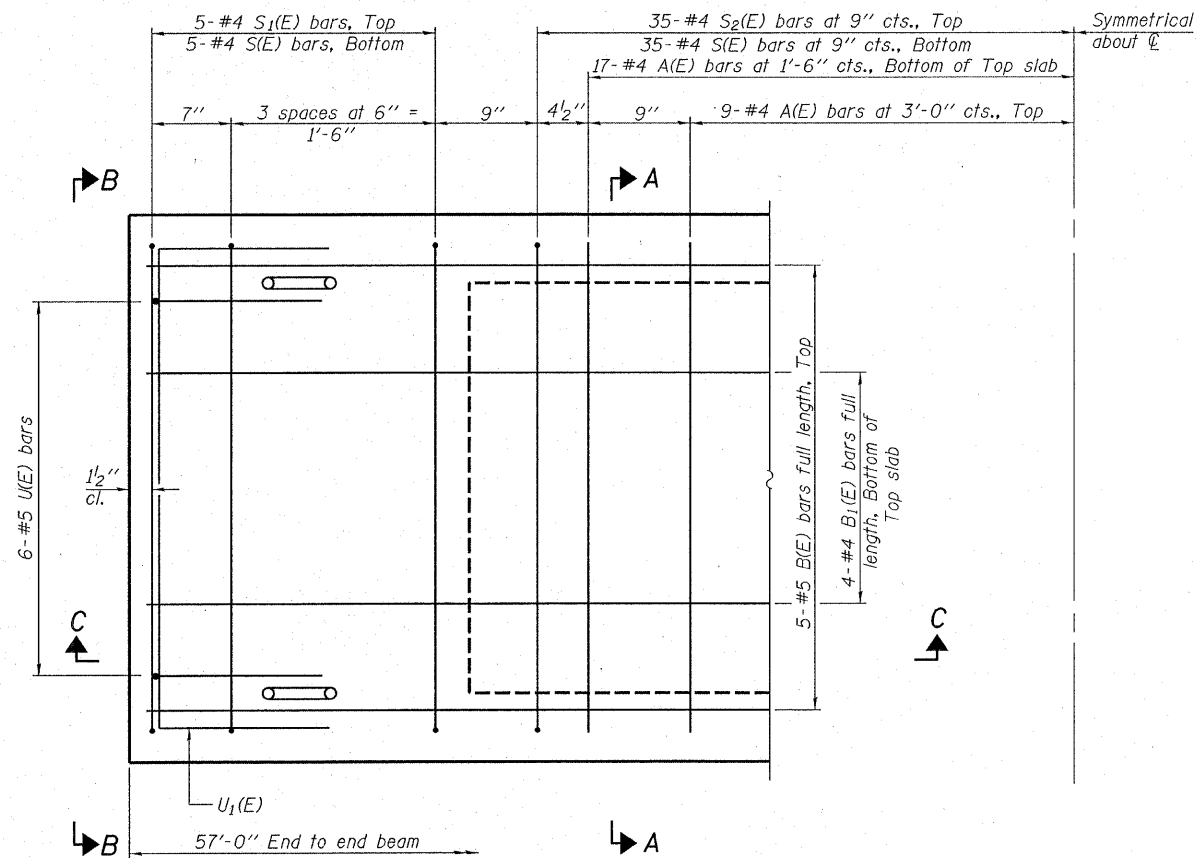
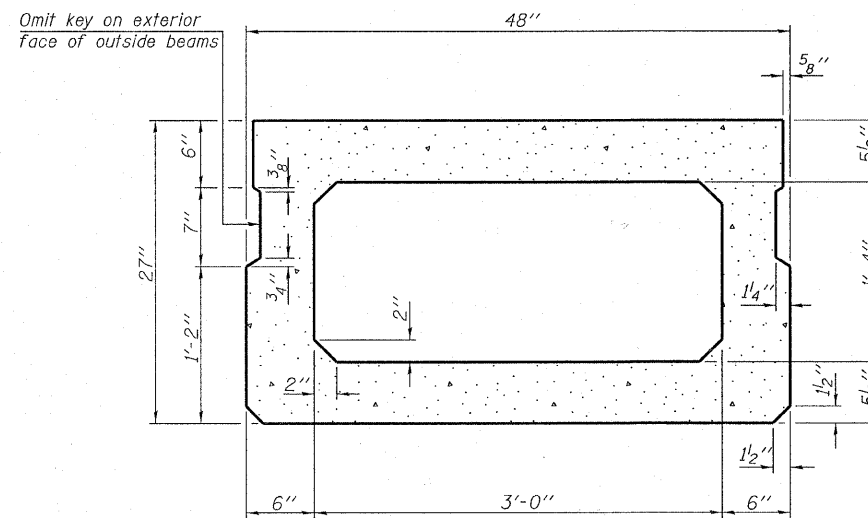


SECTION C-C

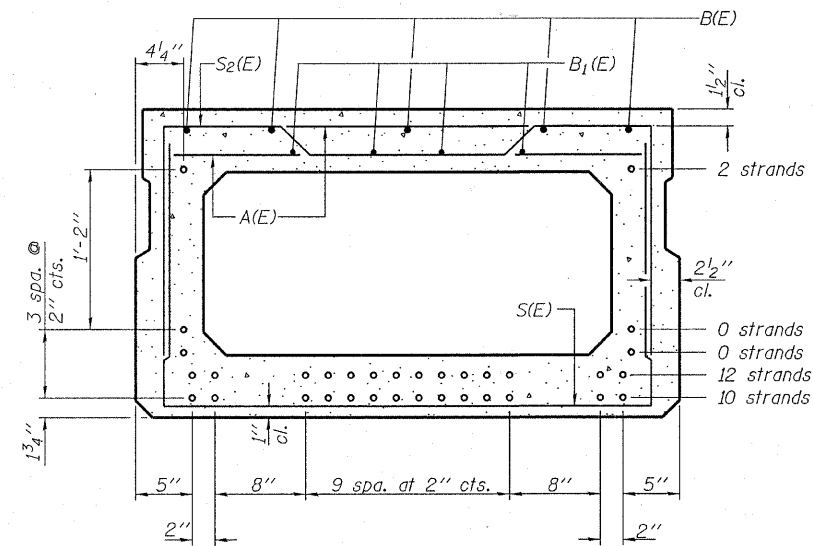


PLAN VIEW

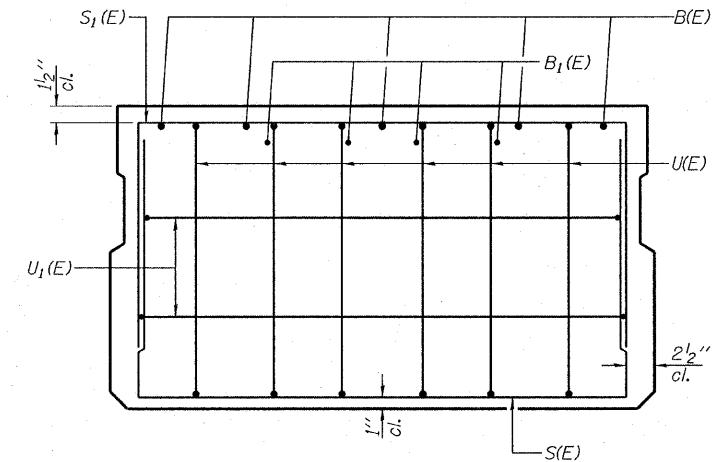
Note: Spacing of S(E) and S₂(E) bars may be adjusted up to 4" in the immediate area of the transverse tie diaphragms to miss the block outs for the transverse ties.



SECTION A-A
(Showing dimensions)



SECTION A-A
(Showing reinforcement and permissible strand locations)
Note: Place the number of strands specified in each row symmetrically about the centerline of beam in the permissible strand locations shown.



VIEW B-B

BAR LIST
ONE BEAM ONLY
(For information only)

Bar	No.	Size	Length	Shape
A(E)	52	#4	3'-7"	—
B(E)	5	#5	56'-8"	—
B ₁ (E)	4	#4	56'-8"	—
S(E)	80	#4	7'-5"	⌊
S ₁ (E)	10	#4	6'-11"	⌊
S ₂ (E)	70	#4	7'-2"	⌊
U(E)	12	#5	4'-6"	⌊
U ₁ (E)	4	#4	6'-0"	⌊

Note: See sheets 3 & 4 of 9 for additional details and Bill of Material.

DESIGNED - S.M.S.
CHECKED - S.W.M.
DRAWN - D.A.B.
CHECKED - D.T.M.

PD-2748-0 5-16-08

HAMPTON, LENZINI & RENWICK, INC.
CIVIL & STRUCTURAL ENGINEERS
LAND SURVEYORS

HLR 3085 STEVENSON DRIVE, SUITE 201
SPRINGFIELD, ILLINOIS 62703
(217) 546-3400

PROJECT NUMBER: 08.0102.130 DATE: 08/25/08

SHEET NO. 2
9 SHEETS

T.R.	SECTION	COUNTY	TOTAL SHEETS	SHEET NO.
234	08-09113-00-BR	HAMILTON	13	6
SOUTH CROUCH ROAD DISTRICT		CONTRACT NO. 99343		
FED. ROAD DIST. NO. 9 ILLINOIS FED. AID PROJECT				

SUPERSTRUCTURE
27" X 48" PPC DECK BEAM
STRUCTURE NO. 033-3310