

STATE OF ILLINOIS  
DEPARTMENT OF TRANSPORTATION

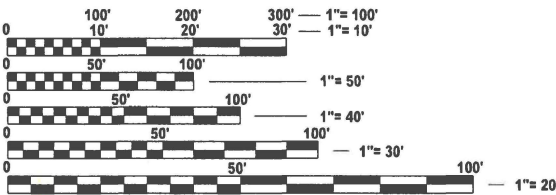
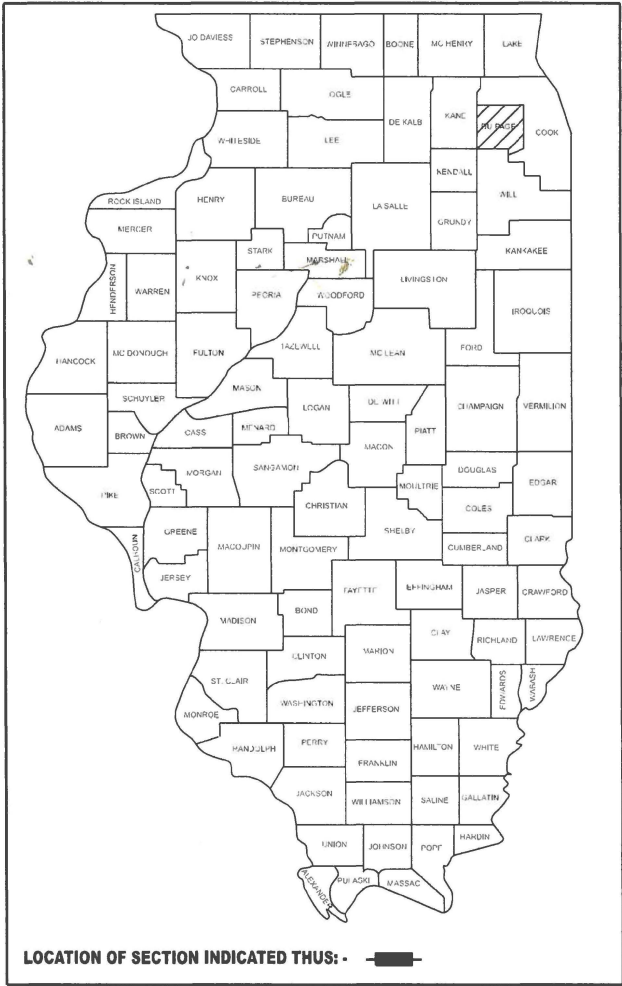
FOR INDEX OF SHEETS, SEE SHEET NO. 2

**PROPOSED  
HIGHWAY PLANS**  
**VARIOUS DUPAGE COUNTY ARTERIAL ROUTES  
DISTRICT 1  
SECTION 2025-2025-SWP(DUPAGE)  
ARTERIAL HIGHWAY CLEANING (SWEEPING)  
DUPAGE COUNTY**  
C-91-029-26

F.A. RTE.	SECTION	COUNTY	TOTAL SHEETS	SHEET NO.
VAR	2025-2025-SWP(DUPAGE)	DUPAGE	7	1
		ILLINOIS	CONTRACT NO. 80B70	

\*VARIOUS

D-91-024-26



FULL SIZE PLANS HAVE BEEN PREPARED USING STANDARD ENGINEERING SCALES. REDUCED SIZED PLANS WILL NOT CONFORM TO STANDARD SCALES. IN MAKING MEASUREMENTS ON REDUCED PLANS, THE ABOVE SCALES MAY BE USED.

J.U.L.I.E.  
JOINT UTILITY LOCATION INFORMATION FOR EXCAVATION  
1-800-892-0123  
OR 811

PROJECT ENGINEER: OSCAR OLIVEROS (847) 705-4548  
PROJECT MANAGER: JACEK EJMONT (847) 705-4641

CONTRACT NO. 80B70

SEE LOCATION MAPS  
SHEETS 4 THRU 8

STATE OF ILLINOIS  
DEPARTMENT OF TRANSPORTATION

SUBMITTED Aug 20<sup>th</sup> 2025  
[Signature] REGIONAL ENGINEER

October 3, 2025  
[Signature] ENGINEER OF DESIGN AND ENVIRONMENT

October 3, 2025  
[Signature] DIRECTOR OF HIGHWAYS PROJECT IMPLEMENTATION

PRINTED BY THE AUTHORITY  
OF THE STATE OF ILLINOIS

## INDEX OF SHEETS

1. TITLE SHEET
2. INDEX OF SHEETS  
APPLICABLE STATE STANDARDS
3. SUMMARY OF QUANTITIES  
GENERAL NOTES
4. TYPICAL ARTERIAL CROSS SECTIONS  
AND CURB RETURN DETAIL
5. ARTERIAL CLEANING LOCATION MAP  
DUPAGE COUNTY NAPERVILLE TEAM SECTION
6. ARTERIAL CLEANING LOCATION MAP  
DUPAGE COUNTY OAKBROOK TEAM SECTION
7. TRAFFIC CONTROL AND PROTECTION FOR SIDE ROADS,  
INTERSECTIONS AND DRIVEWAYS (TC-10)

## STATE STANDARDS

701001-02	OFF-RD OPERATIONS, 2L, 2W, MORE THAN 15' (4.5 m) AWAY
701006-05	OFF-RD OPERATIONS, 2L, 2W, 15' (4.5 m) TO 24" (600 mm) FROM PAVEMENT EDGE
701011-04	OFF-RD MOVING OPERATIONS 2L, 2W, DAY ONLY
701301-04	LANE CLOSURE, 2L, 2W, SHORT TIME OPERATIONS
701311-03	LANE CLOSURE 2L, 2W MOVING OPERATIONS DAY ONLY
701411-09	LANE CLOSURE, MULTILANE, AT ENTRANCE OR EXIT RAMP, FOR SPEEDS $\geq 45$ MPH
701426-09	LANE CLOSURE, MULTILANE, INTERMITTENT OR MOVING OPER., FOR SPEEDS $\geq 45$ MPH
701427-05	LANE CLOSURE, MULTILANE, INTERMITTENT OR MOVING OPER., FOR SPEEDS $\leq 40$ MPH
701901-10	TRAFFIC CONTROL DEVICES

	USER NAME   =	DESIGNED   -	REVISED   -	STATE OF ILLINOIS DEPARTMENT OF TRANSPORTATION	INDEX OF SHEETS, STATE STANDARDS AND GENERAL NOTES				F.A.* RTE.	SECTION	COUNTY	TOTAL SHEETS	SHEET NO.	
		DRAWN    -	REVISED   -						VAR	2025-2025-SWP (DUPAGE)	DUPAGE	7	2	
	PLOT SCALE   = \$SCALE\$	CHECKED   -	REVISED   -						CONTRACT NO. 80B70					
	PLOT DATE    =	DATE       -	REVISED   -		SCALE:	SHEET	OF	SHEETS	STA.	TO STA.				
					ILLINOIS   FED. AID PROJECT									

MODEL: SOQ [Sheet]  
FILE NAME: c:\p\work\pwid\thanh.vo@illinois.gov\1144638\102426-sh-cen.nole.dgn

SUMMARY OF QUANTITIES

CODE NO.	ITEM	UNIT	URBAN	100 % STATE 0044
			TOTAL QUANTITIES	ARTERIAL
Z0010617	SUPPLEMENTAL SWEEPING	MILE	100	100
X0330600	FULL ARTERIAL CLEANING CYCLE	EACH	4	4

NOTES:

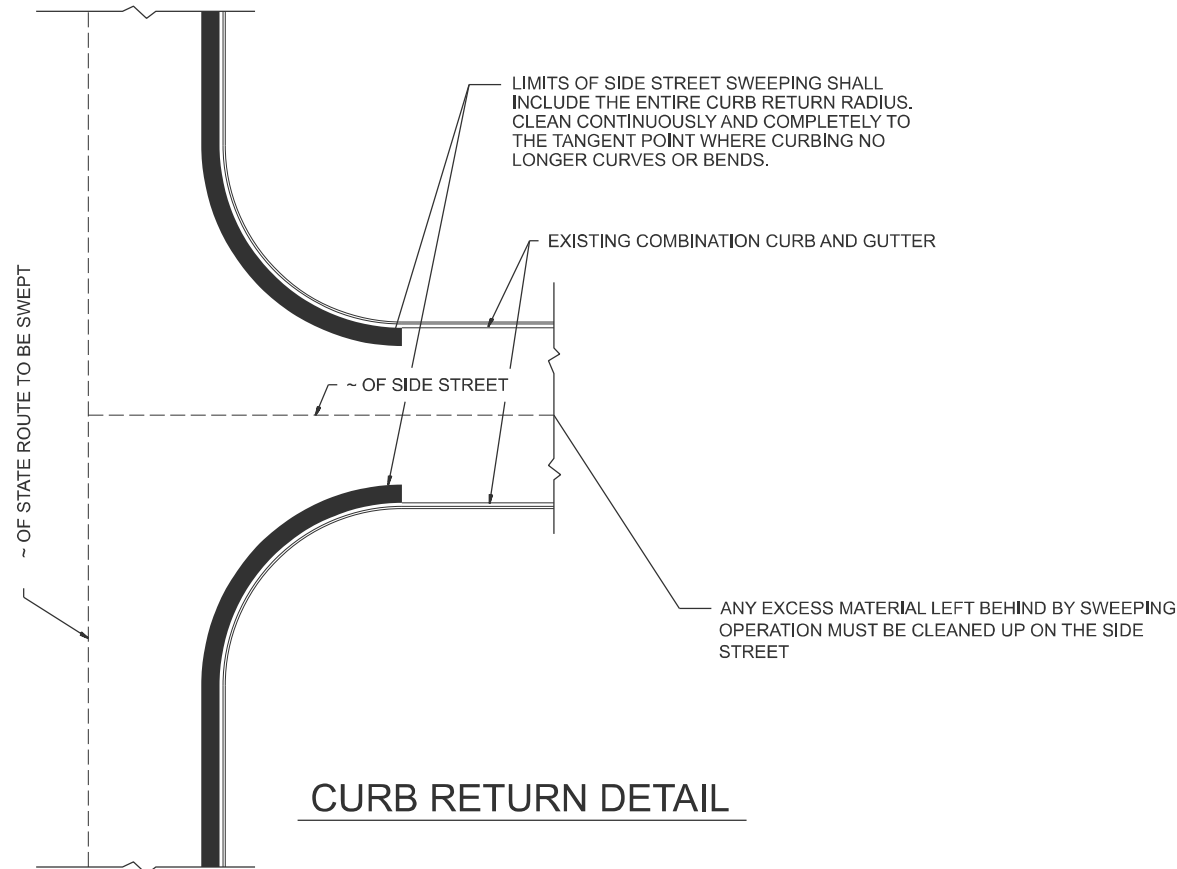
1. THE CONTRACTOR IS EXPECTED TO COMPLETE TWO CYCLES PER CALENDAR YEAR. THE SCHEDULE MAY VARY AS DIRECTED BY THE ENGINEER.
2. ARTERIAL CLEANING CYCLE SCHEDULE WILL BE COORDINATED DURING THE PRE-CONSTRUCTION MEETING. THE CONTRACTOR SHALL NOT START CLEANING CYCLES BEFORE THE DATES SCHEDULED WITHOUT WRITTEN AUTHORIZATION FROM THE ENGINEER.
3. NO DAILY CONTRACTOR WORK REQUESTS / SCHEDULING SHALL BE AUTHORIZED OR APPROVED TO START WHEN IT IS DETERMINED BY THE ENGINEER THAT WEATHER CONDITIONS WILL BE UNFAVORABLE. APPROVAL OF ALL DAILY CONTRACTOR WORK SCHEDULE REQUEST SHALL BE SOLELY DETERMINED BY THE ENGINEER.
4. ALL LANE AND SHOULDER CLOSURES SHALL BE IMMEDIATELY REMOVED DURING ALL ADVERSE WEATHER CONDITIONS WITHOUT EXCEPTION, INCLUDING BUT NOT LIMITED TO RAIN, WET ROAD SURFACE (SPRAY FROM TIRES), MIST, DRIZZLE, SLEET, SNOW, FOG AND ANY OTHER CIRCUMSTANCE DETERMINED UNSAFE BY THE ENGINEER. THE CONTRACTOR SHALL IMPLEMENT THIS CONTRACT REQUIREMENT IMMEDIATELY WITHOUT WAITING FOR DEPARTMENT INSTRUCTIONS.
5. SWEEPING WILL NOT PROCEED IF TEMPERATURES ARE FORECASTED BY THE DEPARTMENT'S CONSULTING METEOROLOGISTS TO DROP BELOW 32°F. ALL SHOULDER AND CURB LINES MUST BE FREE OF ANY EXISTING SNOW AND/OR ICE. DRY SWEEPING SHALL BE ALLOWED ONLY IF IT IS CONSIDERED AN EMERGENCY, IMMEDIATE HAZARD, OR ANY WORK AS DESIGNATED BY THE DEPARTMENT THAT REQUIRES FIRST PRIORITY CORRECTIVE ACTION.
6. NO WORK WILL BE ALLOWED DURING THE FOLLOWING LEGAL HOLIDAYS AS IN ACCORDINANCE WITH ARTICLE 107.09 OR AS PER DISTRICT 1 BUREAU OF TRAFFIC RESTRICTIONS UNLESS IT IS CONSIDERED AN EMERGENCY, IMMEDIATE HAZARD OR ANY WORK AS DESIGNATED BY THE DEPARTMENT THAT REQUIRES FIRST PRIORITY CORRECTIVE ACTION:

NEW YEAR'S HOLIDAY  
EASTER HOLIDAY  
MEMORIAL DAY HOLIDAY  
INDEPENDENCE DAY HOLIDAY  
THANKSGIVING HOLIDAY  
CHRISTMAS

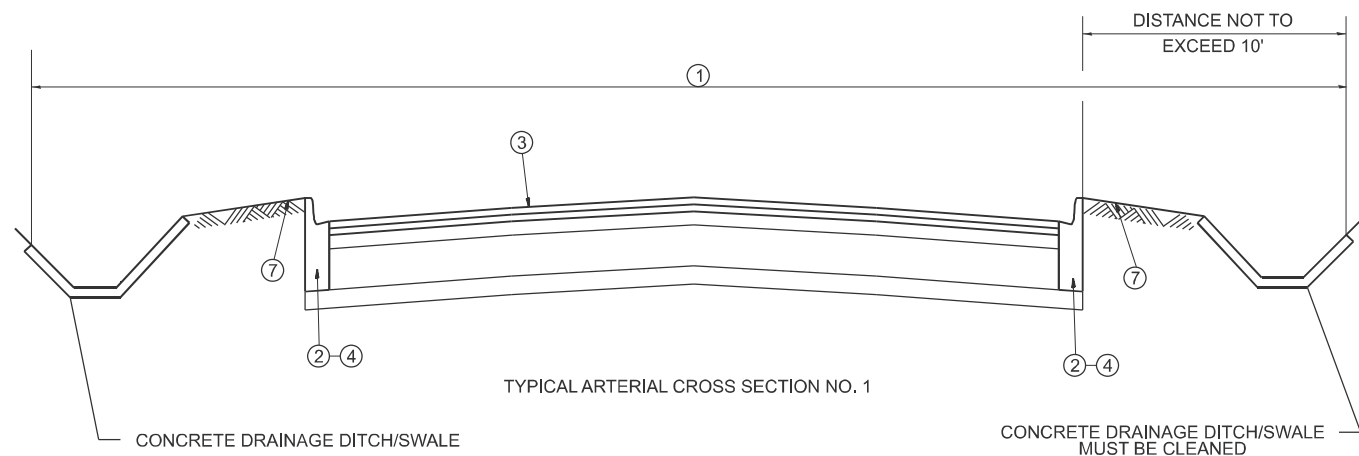
THE CONTRACTOR SHALL CONTACT KALPANA KANNAN-HOSADURGA, THE DISTRICT ONE TRAFFIC CONTROL SUPERVISOR, AT KALPANA.KANNAN-HOSADURGA@ILLINOIS.GOV A MINIMUM OF 72 HOURS IN ADVANCE OF BEGINNING WORK

	USER NAME = Thanh.vo	DESIGNED -	REVISED -	STATE OF ILLINOIS DEPARTMENT OF TRANSPORTATION	SUMMARY OF QUANTITIES AND SCHEDULE OF STARTING DATES			F.A.* RTE.	SECTION	COUNTY	TOTAL SHEETS	SHEET NO.
		DRAWN -	REVISED -					VAR	2025-2025-SWP(DUPAGE)	DUPAGE	7	3
	PLOT SCALE = \$\$SCALE\$	CHECKED -	REVISED -					CONTRACT NO. 80B70				
	PLOT DATE = 8/19/2025	DATE -	REVISED -		SCALE: Full Size 1 = 1	SHEET	OF 2 SHEETS	STA.	TO STA.	ILLINOIS FED. AID PROJECT		

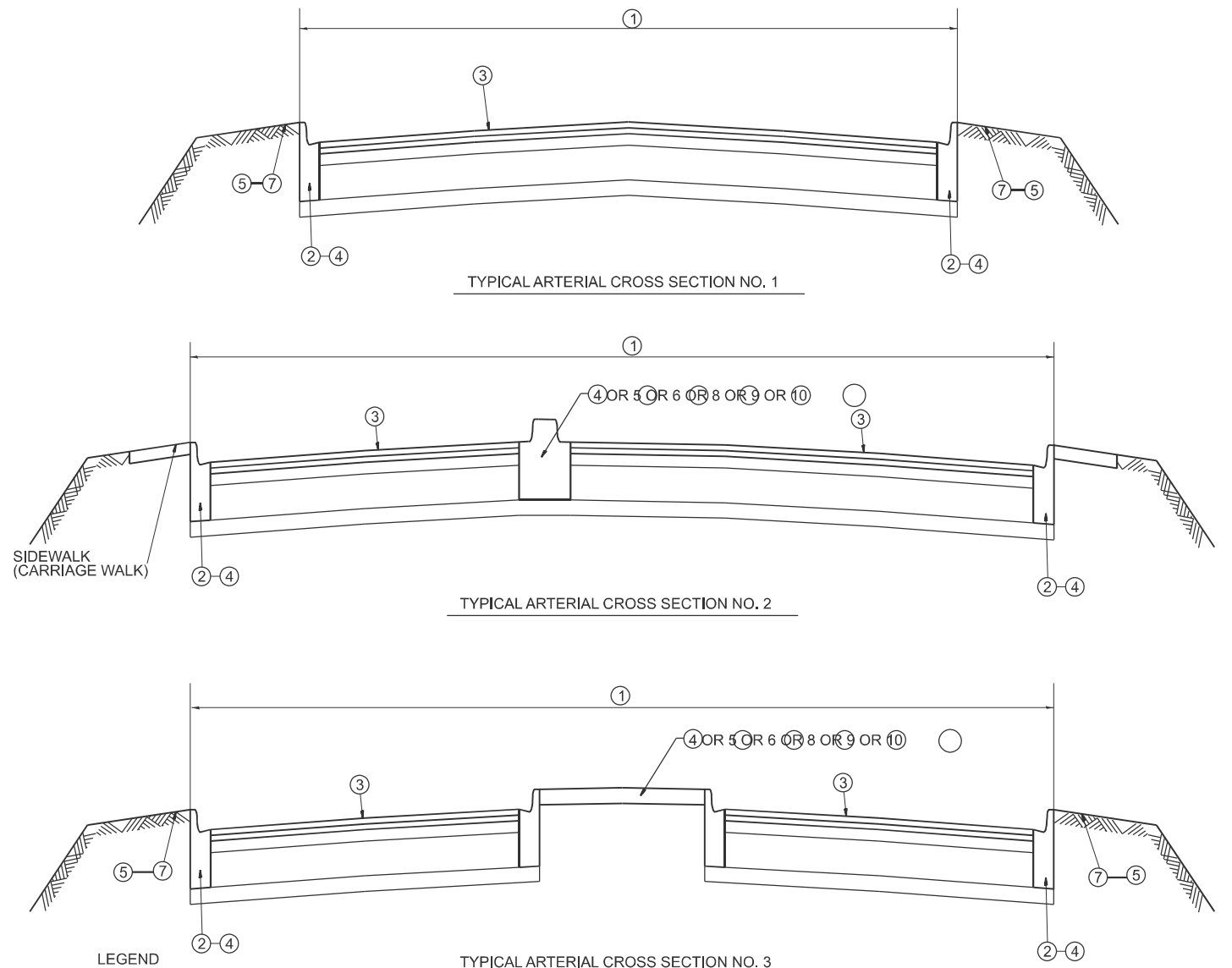
\*VARIOUS



CURB RETURN DETAIL



TYPICAL ARTERIAL CROSS SECTION NO. 1



- LEGEND
- 1) AREA OF ROADWAY CLEANING AND RUBBISH REMOVAL
  - 2) CURB AND GUTTER
  - 3) TRAVELED ROADWAY
  - 4) STABILIZED SHOULDER OR MEDIAN
  - 5) STEEL PLATE GUARDRAIL (SEE NOTE 1)
  - 6) CONCRETE BARRIER
  - 7) NON STABILIZED AREA
  - 8) RAISED CONCRETE MEDIAN
  - 9) ALL EXISTING TURF MEDIANS
  - 10) LITTER PICKING

NOTES:

- 1) ALL LOCATIONS OF MEDIANS AND GUARDRAILS SHALL BE CLEANED OF ALL DEBRIS AND RUBBISH INCLUDING BUT NOT LIMITED TO DIRT, WEEDS, SAND, ROCKS, GRAVEL, CONCRETE, WOOD, LIMBS, LEAVES, GARBAGE & ANIMAL CARCASSES BY HAND LABORING UNDERNEATH AND 10 FEET BEHIND GUARDRAIL INCLUDING STABILIZED AND NON STABILIZED AREAS. THIS WORK SHALL BE CONSIDERED AS INCLUDED IN THE CONTRACT UNIT PRICE FOR ALL FULL CLEANING CYCLES.
- 2) SLOPE WALLS UNDER BRIDGES ARE NOT INCLUDED IN AREAS TO BE CLEANED.
- 3) ALL ARTERIAL INTERCHANGES, INTERSECTIONS, RAMPS AND CROSSOVERS SHALL BE CLEANED AND LITTER PICKED.
- 4) ALL PAVED DITCHES AND SPILLWAYS WITHIN 10' OF STABILIZED BASE SHALL BE CLEANED

TYPICAL ARTERIAL CROSS SECTION NO. 4

STATE OF ILLINOIS  
DEPARTMENT OF TRANSPORTATION

TYPICAL ARTERIAL CROSS SECTIONS  
AND CURB RETURN DETAIL

SCALE: SHEET 1 OF 1 SHEETS STA. TO STA.

F.A.* RTE.	SECTION	COUNTY	TOTAL SHEETS	SHEET NO.
VAR	2025-2025-SWP(DUPAGE)	DUPAGE	7	4
CONTRACT NO. 80B70				
ILLINOIS FED. AID PROJECT				

\*VARIOUS



DISTRICT NO. 1

===== STATE HIGHWAYS & EXPRESSWAYS  
WITHIN STATE JURISDICTION  
(EXCEPT TOLLWAYS)

█ STATE HIGHWAYS & EXPRESSWAYS  
TO BE CLEANED

== FUTURE HIGHWAYS

----- VARIOUS AGENCIES HIGHWAYS

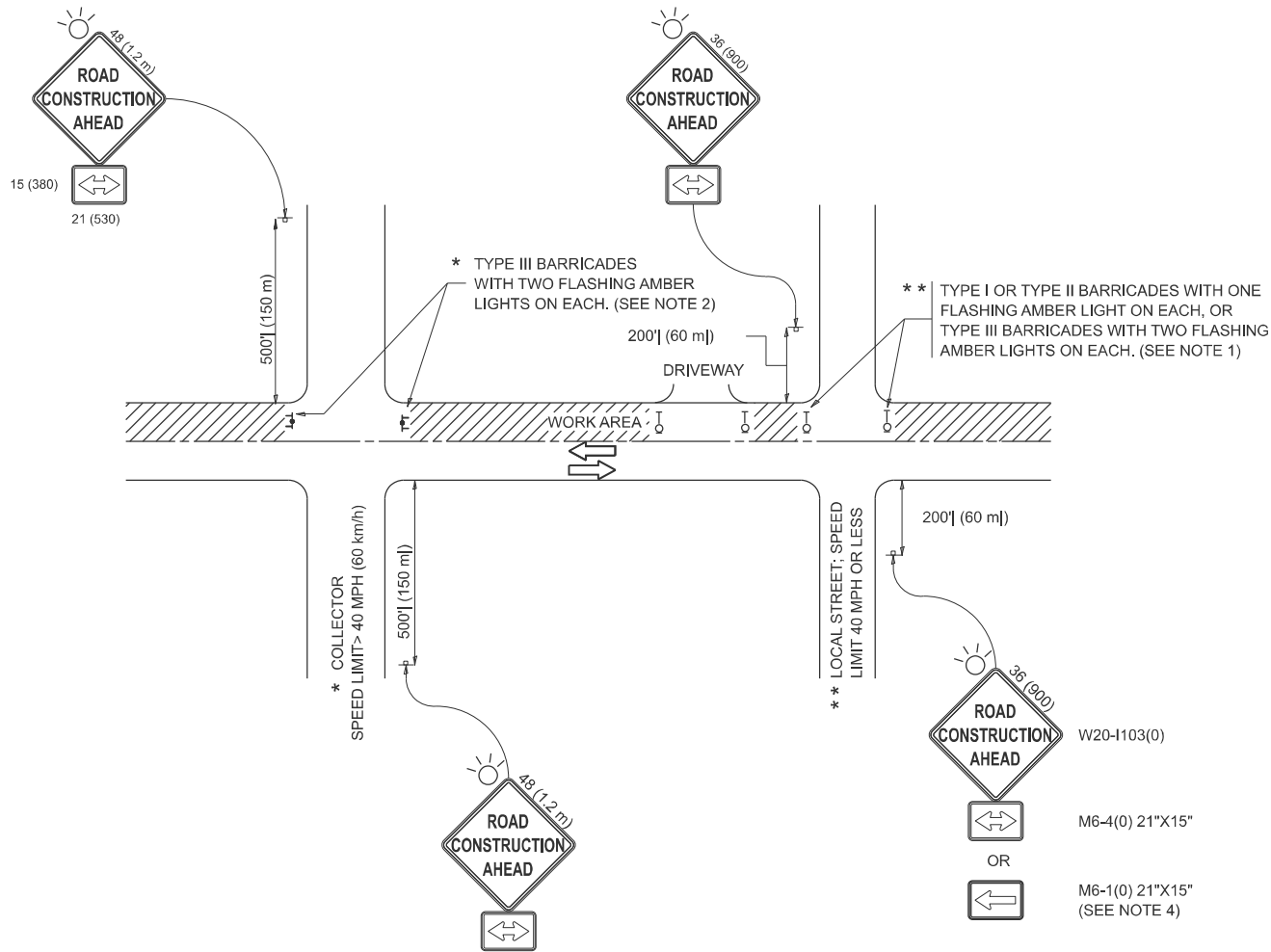
F.A.* RTE.	SECTION	COUNTY	TOTAL SHEETS	SHEET NO.
VAR	2025-2025-SWP(DUPAGE)	DUPAGE	7	5
		CONTRACT NO. 80B70		
ILLINOIS		FED. AID PROJECT		

MODEL: Naperville Team Section [Sheet]  
FILE NAME: c:\pw work\pwidott\thanh.vo@illinois.gov\1144638\1D102426-sht-details.dgn

\*VARIOUS



MODEL: TC-10 (Sheet)  
FILE NAME: c:\p\work\ledezma\mdd0920086\DuPage\_Var\_Routes-shl-details.dgn



NOTES:

- SIDE ROAD WITH A SPEED LIMIT OF 40 MPH (60 km/h) OR LESS AS SHOWN ON THE DRAWING AND AS DIRECTED BY THE ENGINEER:
  - ONE "ROAD CONSTRUCTION AHEAD" SIGN 36 x 36 (900x900) WITH A FLASHER MOUNTED ON IT APPROXIMATELY 200' (60 m) IN ADVANCE OF THE MAIN ROUTE.
  - THE CLOSED PORTION OF THE MAIN ROUTE SHALL BE PROTECTED BY BLOCKING WITH TYPE I, TYPE II OR TYPE III BARRICADES, 1/3 OF THE CROSS SECTION OF THE CLOSED PORTION.
- SIDE ROAD WITH A SPEED LIMIT GREATER THAN 40 MPH (60 km/h) AS SHOWN ON THE DRAWING AND AS DIRECTED BY THE ENGINEER:
  - ONE "ROAD CONSTRUCTION AHEAD" SIGN 48 x 48 (1.2 m x 1.2 m) WITH A FLASHER MOUNTED ON IT APPROXIMATELY 500' (150 m) IN ADVANCE OF THE MAIN ROUTE.
  - THE CLOSED PORTION OF THE MAIN ROUTE SHALL BE PROTECTED BY BLOCKING WITH TYPE III BARRICADES, 1/2 OF THE CROSS SECTION OF THE CLOSED PORTION.
- CONES MAY BE SUBSTITUTED FOR BARRICADES OR DRUMS AT HALF THE SPACING DURING DAY OPERATIONS. CONES SHALL BE A MINIMUM OF 28 (710) IN HEIGHT.
- WHEN THE SIDE ROAD LIES BETWEEN THE BEGINNING OF THE MAINLINE SIGNING AND THE WORK ZONE, A SINGLE HEADED ARROW (M6-1) SHALL BE USED IN LIEU OF THE DOUBLE HEADED ARROW (M6-4).
- WHEN WORK IS BEING PERFORMED ON A SIDE ROAD OR DRIVEWAY, FOLLOW THE APPLICABLE STANDARD(S). THE DIRECTIONAL ARROW (M6-1 OR M6-4) SHALL BE COVERED OR REMOVED WHEN NO LONGER CONSISTENT WITH THE TRAFFIC CONTROL SET-UP.
- ADVANCE WARNING SIGNS ARE TO BE OMITTED ON DRIVEWAYS UNLESS OTHERWISE SPECIFIED IN THE PLANS OR BY THE ENGINEER.
- THE TRAFFIC CONTROL AND PROTECTION FOR SIDE ROADS, INTERSECTIONS, AND DRIVEWAYS SHALL BE INCLUDED IN THE COST OF SPECIFIED TRAFFIC CONTROL STANDARDS OR ITEMS.

All dimensions are in inches (millimeters)  
unless otherwise shown.

USER NAME	= rodrigo.ledezma	DESIGNED	- L.H.A.	REVISED	- A. HOUSEH 10-15-96
		DRAWN	-	REVISED	- T. RAMMACHER 01-06-00
PLOT SCALE	= \$\$SCALE\$	CHECKED	-	REVISED	- A. SCHUETZE 07-01-13
PLOT DATE	= 9/26/2023	DATE	- 06-89	REVISED	- A. SCHUETZE 09-15-16

STATE OF ILLINOIS  
DEPARTMENT OF TRANSPORTATION

TRAFFIC CONTROL AND PROTECTION FOR  
SIDE ROADS, INTERSECTIONS, AND DRIVEWAYS

SCALE: SHEET OF SHEETS STA. TO STA.

F.A. * RTE.	SECTION	COUNTY	TOTAL SHEETS	SHEET NO.
VAR	2025-2025-SWP(DUPAGE)	DUPAGE	7	7
TC-10		CONTRACT NO. 80B70		
		ILLINOIS FED. AID PROJECT		

\*VARIOUS