

STA. EQUATION:
 STA. 514+02.36 EXIST. C BK =
 STA. 100+42.21 EXIST. C AH

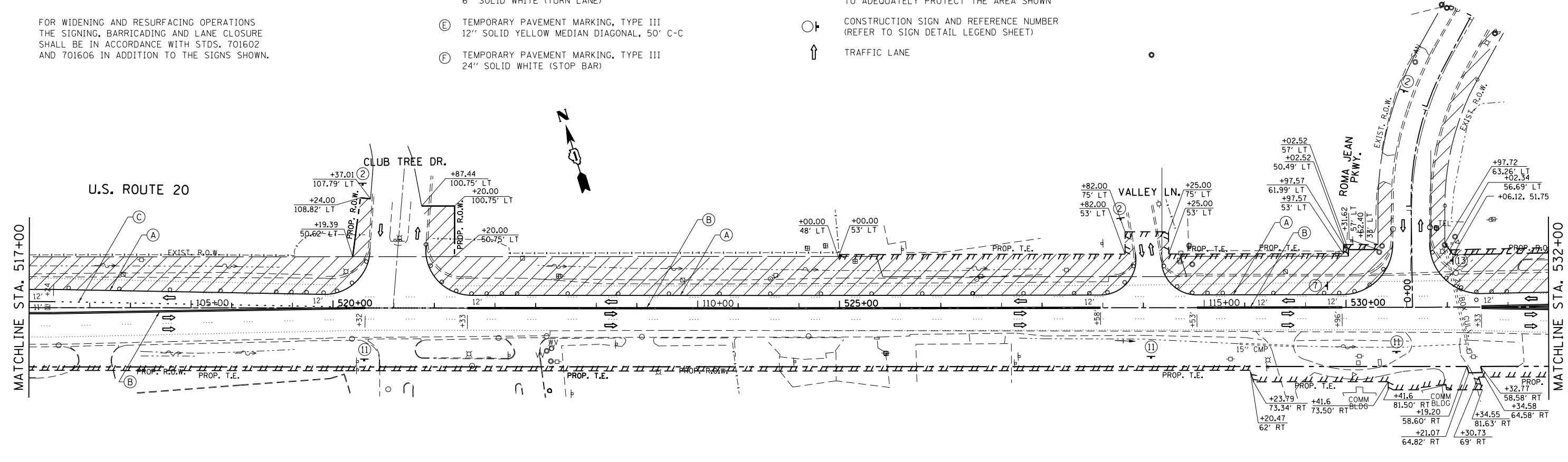
**PROJECT BEGINS
 STA. 515 + 78.66**

LEGEND:

- (A) TEMPORARY PAVEMENT MARKING, TYPE III
4" SOLID WHITE EDGE LINE
- (B) TEMPORARY PAVEMENT MARKING, TYPE III
4" SOLID DOUBLE YELLOW
- (C) TEMPORARY PAVEMENT MARKING, TYPE III
6" SKIP-DASH WHITE (TURN LANE)
- (D) TEMPORARY PAVEMENT MARKING, TYPE III
6" SOLID WHITE (TURN LANE)
- (E) TEMPORARY PAVEMENT MARKING, TYPE III
12" SOLID YELLOW MEDIAN DIAGONAL, 50' C-C
- (F) TEMPORARY PAVEMENT MARKING, TYPE III
24" SOLID WHITE (STOP BAR)

- BARRICADE TYPE I OR TYPE II OR REFLECTORIZED DRUM @ 50' TYP.
25' C-C IN CURVES AND RADII, AND 20' C-C IN TAPERS.
OR VERTICAL PANEL WITH ONE BURN LIGHT
- ⊥ TYPE III BARRICADE WITH 2 LIGHTS ONE SYMBOL
REPRESENTS ANY NUMBER OF BARRICADES REQUIRED
TO ADEQUATELY PROTECT THE AREA SHOWN
- + CONSTRUCTION SIGN AND REFERENCE NUMBER
(REFER TO SIGN DETAIL LEGEND SHEET)
- ↑ TRAFFIC LANE

FOR WIDENING AND RESURFACING OPERATIONS
 THE SIGNING, BARRICADING AND LANE CLOSURE
 SHALL BE IN ACCORDANCE WITH STDS. 701602
 AND 701606 IN ADDITION TO THE SIGNS SHOWN.



FILE NAME =	USER NAME = galbenjr	DESIGNED -	REVISED -	STATE OF ILLINOIS DEPARTMENT OF TRANSPORTATION	SUGGESTED STAGING & TRAFFIC CONTROL PLAN, STAGE 1 U.S. 20 (OAK AVE. TO PARK AVE.)	F.A.P. RTE.	SECTION	COUNTY	TOTAL SHEETS	SHEET NO.	
ei:\pwork\pwork\galbenjr\d0304020\PI57	408-sh-t-Design-staging1.dgn	DRAWN -	REVISED -			345	7Y-WRS	COOK	97	22	
#MODELNAME#	PLOT SCALE = 100.0000' / in.	CHECKED -	REVISED -			CONTRACT NO. 60N18					
	PLOT DATE = 4/3/2013	DATE -	REVISED -			ILLINOIS FED. AID PROJECT					