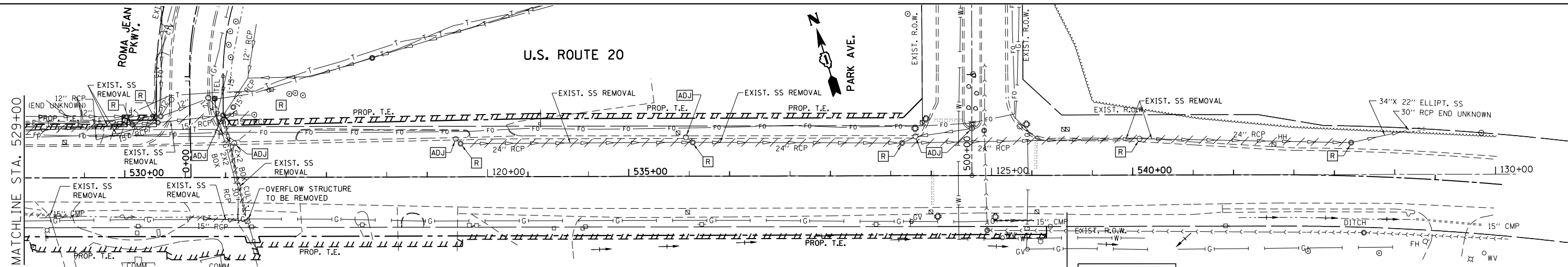
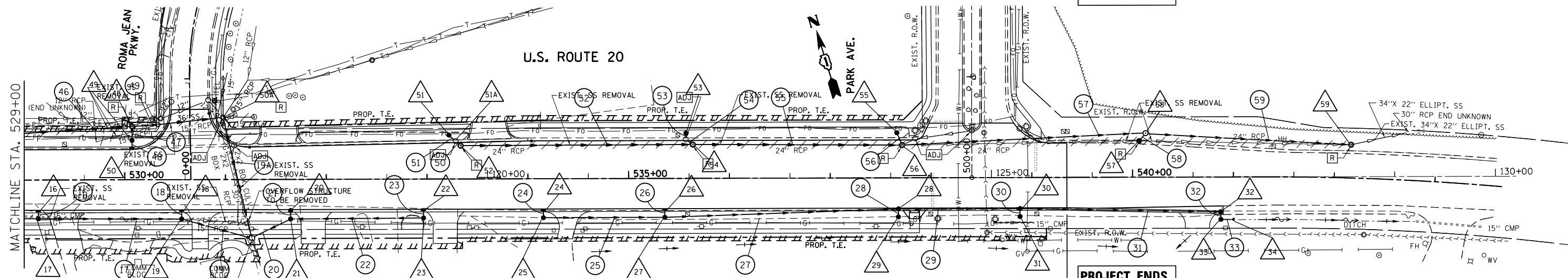


PLAN	SURVEYED	DATE
	PLOTTED	
	ALIGNED	
	CHECKED	
	FILED	
	NO.	

PROFILE	SURVEYED	DATE
	PLOTTED	
	GRADES	
	CHECKED	
	STRUCTURE	
	NOTATIONS	
	NO.	

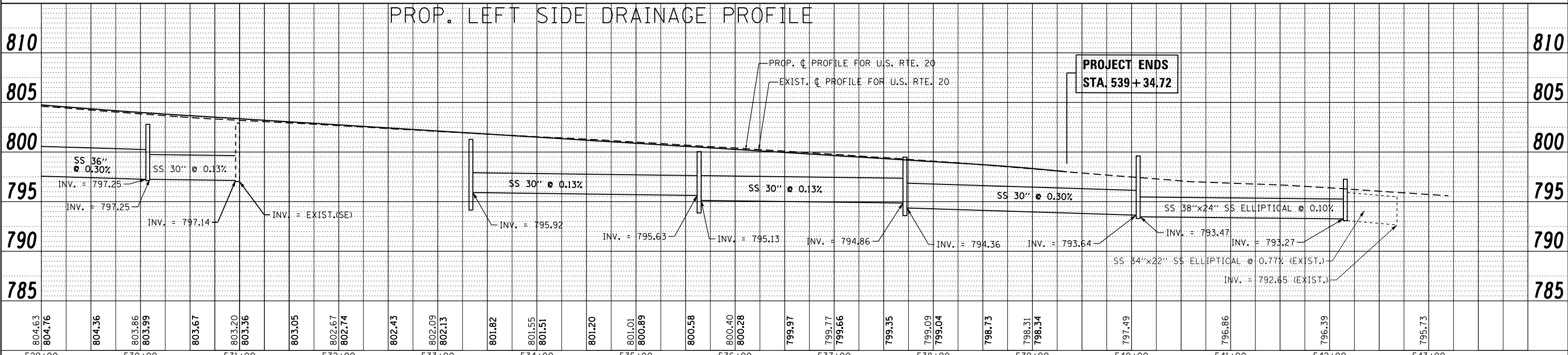


**PROJECT ENDS
STA. 539 + 34.72**



**PROJECT ENDS
STA. 539 + 34.72**

PROP. LEFT SIDE DRAINAGE PROFILE



**PROJECT ENDS
STA. 539 + 34.72**

FILE NAME =	USER NAME = galbanjr	DESIGNED -	REVISED -	STATE OF ILLINOIS DEPARTMENT OF TRANSPORTATION	DRAINAGE PLAN AND PROFILE (LEFT SIDE)			F.A.P. RTE.	SECTION	COUNTY	TOTAL SHEETS	SHEET NO.
c:\pwork\pwork\galbanjr\0304019P157408-sht-drain.dgn		DRAWN -	REVISED -		U.S. ROUTE 20 (OAK AVE. - PARK AVE.)			345	7Y-WRS	COOK	97	28
PLOT SCALE = 100.0000' / in.		CHECKED -	REVISED -		SCALE: 1"=50'			SHEET NO. OF SHEETS		STA. 529+00 TO STA. 543+66.67		
PLOT DATE = 4/3/2013		DATE -	REVISED -					ILLINOIS FED. AID PROJECT		CONTRACT NO. 60N18		