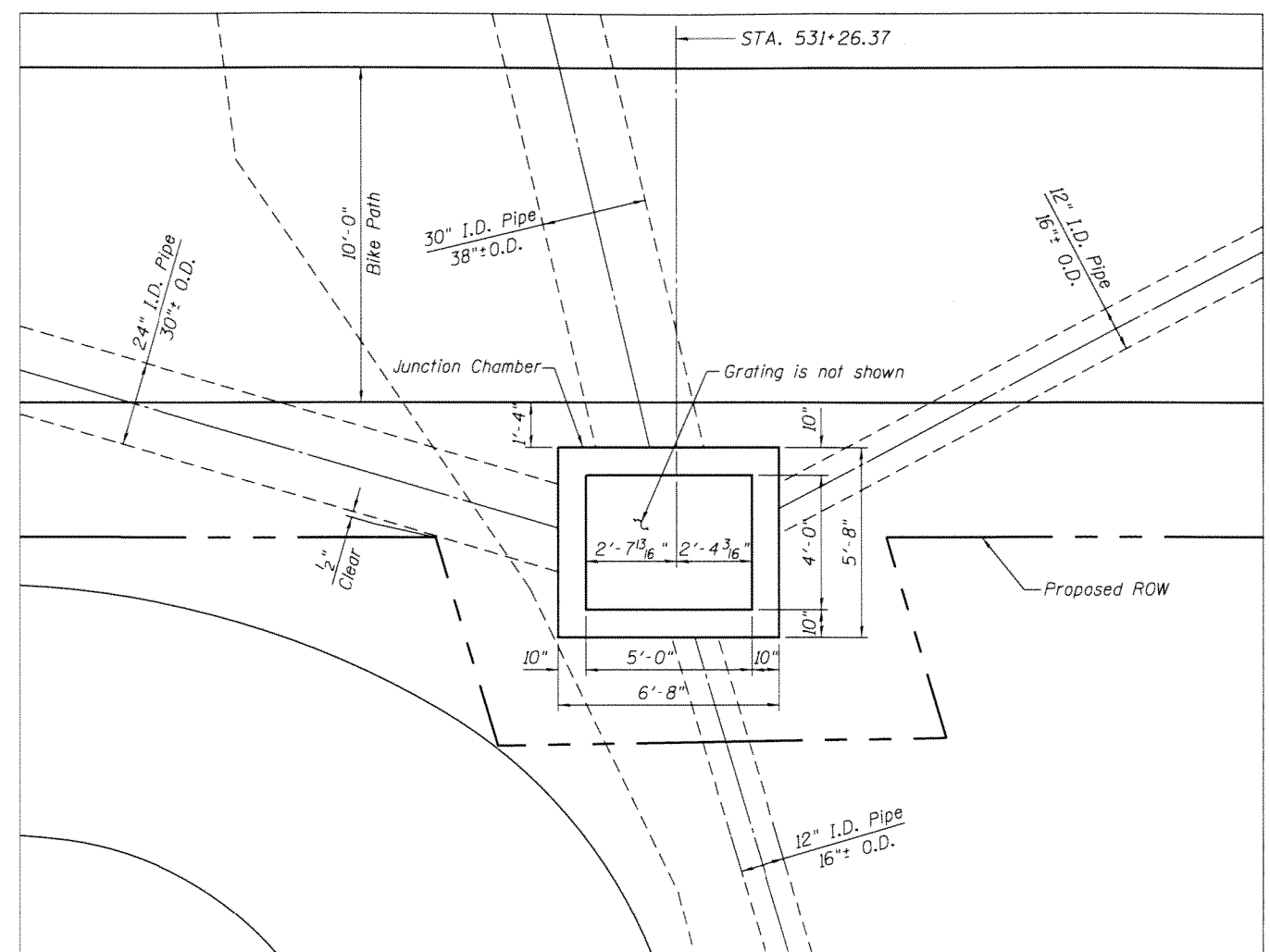


GENERAL PLAN



JUNCTION CHAMBER PLAN VIEW

GENERAL NOTES

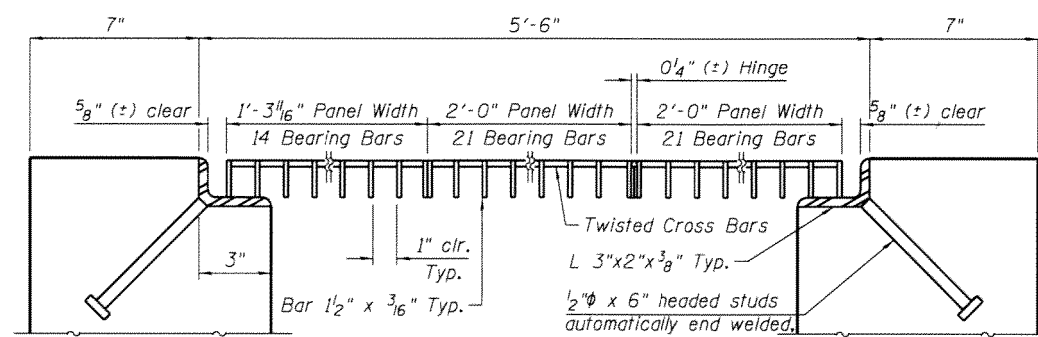
- All exposed concrete edges shall have a $\frac{3}{4}$ " x 45° chamfer except where shown otherwise. Chamfer on vertical edges shall be continued a minimum of one foot below finished ground level.
- Reinforcement bar bending details shall be in accordance with the latest "Manual Of Standard Practice For Detailing Reinforced Concrete Structures", ACI 315.
- Reinforcement bar bending dimensions are out to out.
- Cover from the face of concrete to face of reinforcement bars shall be 3" for surfaces cast against earth and 2" for all other surfaces unless otherwise shown.
- Reinforcement bars designated (E) shall be epoxy coated.
- Protective coat shall be applied to the concrete surfaces at the junction chamber located in the top 1'-0" of the junction chamber.
- Steel grating has been designed for a 1,000 pound wheel load.
- Reduce A dimension of 3 v₁(E) and 3 v₇(E) bars to 4'-6" for use in south wall to clear rectangular openings.
- Excavation and backfill shall not be paid for separately but shall be considered as included with payment for Concrete Structures.

ABBREVIATIONS

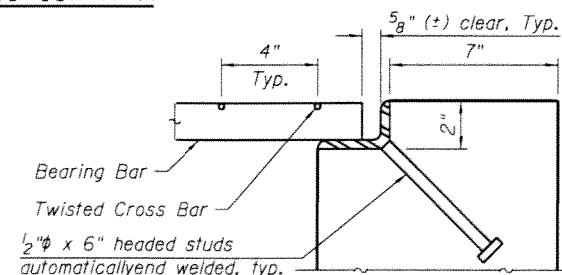
- Clr. Clearance
 cfs. centers (center to center)
 E.F. Each Face
 Elev. Elevation
 I.D. Inside Diameter
 I.F. Inside Face
 O.D. Outside Diameter
 O.F. Outside Face
 psi Pounds Per Square Inch
 Typ. Typical
 U.N.O Unless Noted Otherwise

DESIGN STRESSES

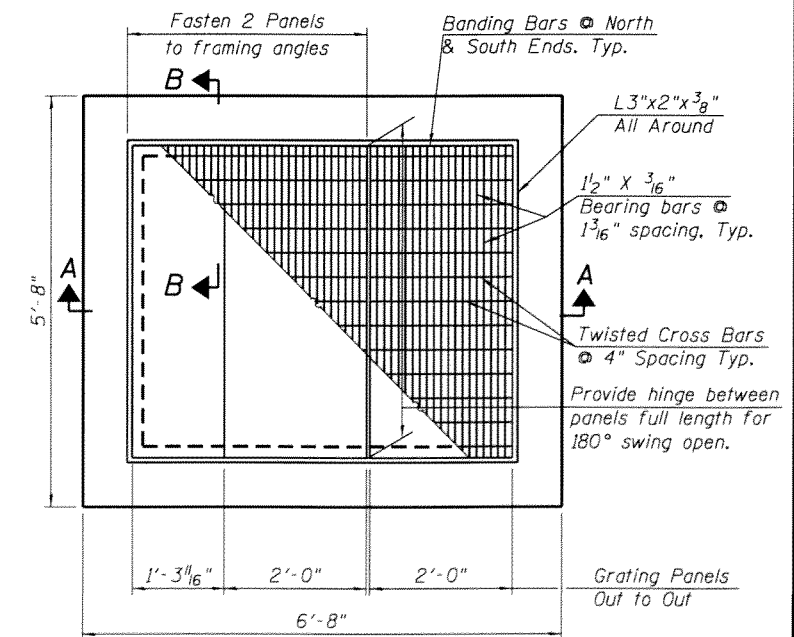
f'c = 3,500 psi @ 14 days, Class SI Concrete
 fy = 60,000 psi, Reinforcement Bars
 fy = 33,000 psi min., Grating Bars (fs=18,000 psi)



SECTION A-A



SECTION B-B



JUNCTION CHAMBER TOP (GRATING) PLAN

H:\Jobs\2011\2011012-34\CAD\Site\rdm\00\DIENIB_UCTChamberDetail.dgn
 12/26/2012 5:02:48 PM

GRAF
 8501 W. Higgins Road, Suite 280
 Chicago, Illinois 60631 (773) 399-0112

USER NAME =	DESIGNED - J.J.G.	REVISED -
PLOT SCALE =	CHECKED - J.A.Z.	REVISED -
PLOT DATE =	DRAWN - G.A.B.	REVISED -
	DATE - 11/26/2012	REVISED -

**STATE OF ILLINOIS
 DEPARTMENT OF TRANSPORTATION**

**U.S. ROUTE 20 (LAKE STREET)-OAK AVENUE TO PARK AVENUE
 JUNCTION CHAMBER, STA 531 + 26.37**

F.A.U. RTE. 345	SECTION 7Y-WRS	COUNTY COOK	TOTAL SHEETS 97	SHEET NO. 63
CONTRACT NO. 60N18				ILLINOIS FED. AID PROJECT

SHEET NO. 51 OF 2 SHEETS