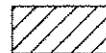


LEGEND



PERMANENT IMPACTS TO THE WATERS OF THE U.S. = 0.0007 ACRES
STONE RIPRAP, CLASS A4 (1" THICK) - 2 TONS

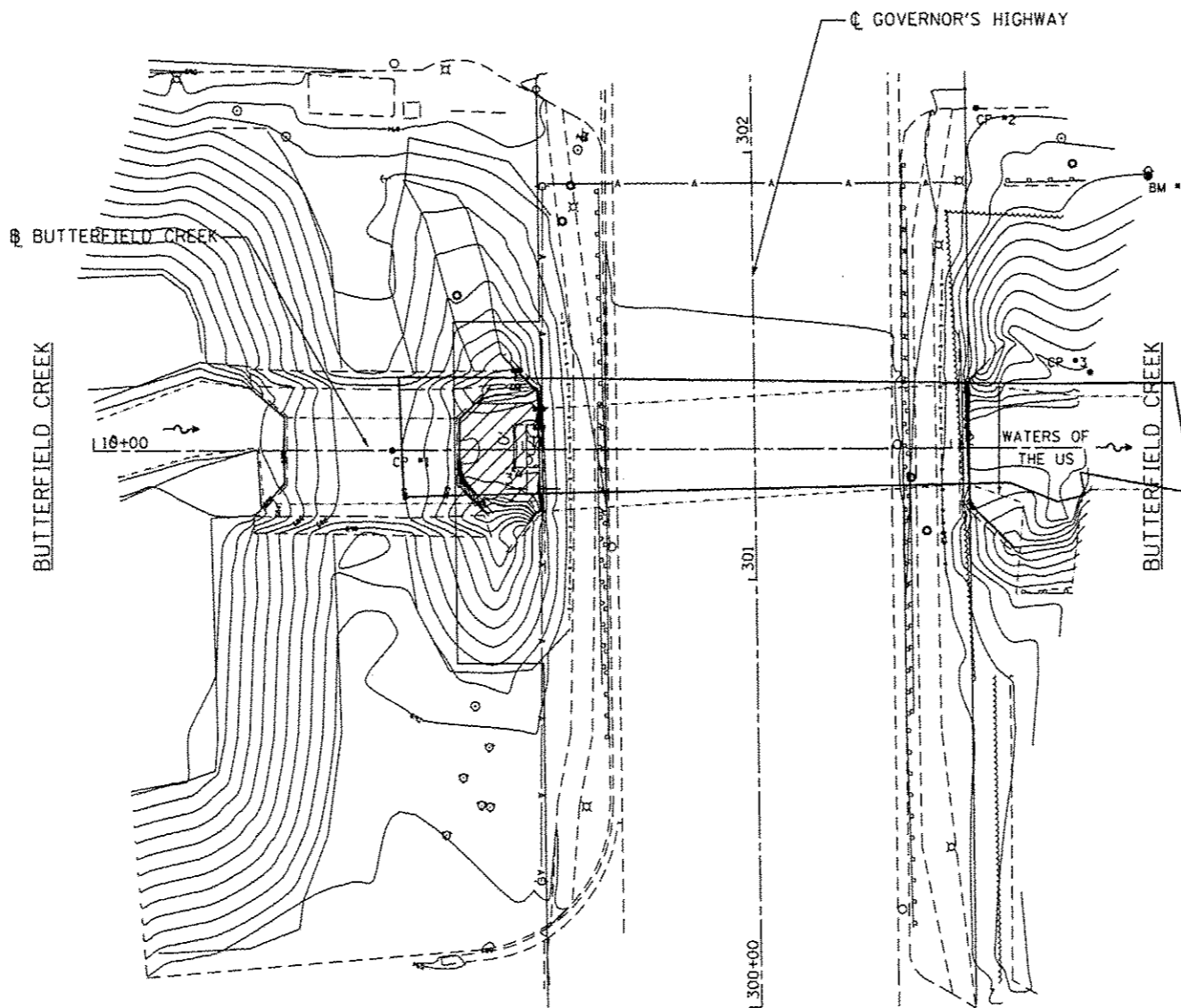


TEMPORARY IMPACTS TO THE WATERS OF THE U.S. = 0.009 ACRES

- CP 1 - CUT "X" INTO CENTER OF CONCRETE SPILLWAY
ELEV = 688.38
- CP 2 - CUT "X" ON TOP OF BARRIER CURB SOUTH OF DRIVEWAY INOT RED LOBSTER
ELEV = 692.60
- CP 3 - SET REBAR IN NORTH OF CREEK
- BM 1 - "X" AT THE SOUTHWEST FLANGE BOLD
ELEV = 691.59

NOTE:

PLACEMENT SHOULD NOT EXCEED BOTTOM OF CULVERT OPENING



3/12/2013 11:24:33 AM

GR&EF
8501 W. Higgins Road, Suite 200
Chicago, Illinois 60631
1773 399-0112

| | | |
|----------------------------|-------------------|-----------|
| USER NAME = 1485 | DESIGNED - | REVISED - |
| PLOT SCALE = 40.0000' / 1" | DRAWN - | REVISED - |
| PLOT DATE = 3/12/2013 | CHECKED - | REVISED - |
| | DATE = 03/20/2013 | REVISED - |

**STATE OF ILLINOIS
DEPARTMENT OF TRANSPORTATION**

COOK & WILL COUNTY RIP RAP IMPROVEMENTS
SN 016-2505 GOVERNOR'S HIGHWAY OVER BUTTERFIELD CREEK - EROSION PLAN
SCALE: 1"=20' SHEET 2 OF 2 SHEETS STA. TO STA.

| F.A. RTE. | SECTION | COUNTY | TOTAL SHEETS | SHEET NO. |
|---------------------------|------------|-----------|--------------------|-----------|
| * | 2012-007 I | COOK/WILL | 38 | 15 |
| * VARIOUS ROUTES | | | CONTRACT NO. 60T53 | |
| ILLINOIS FED. AID PROJECT | | | | |