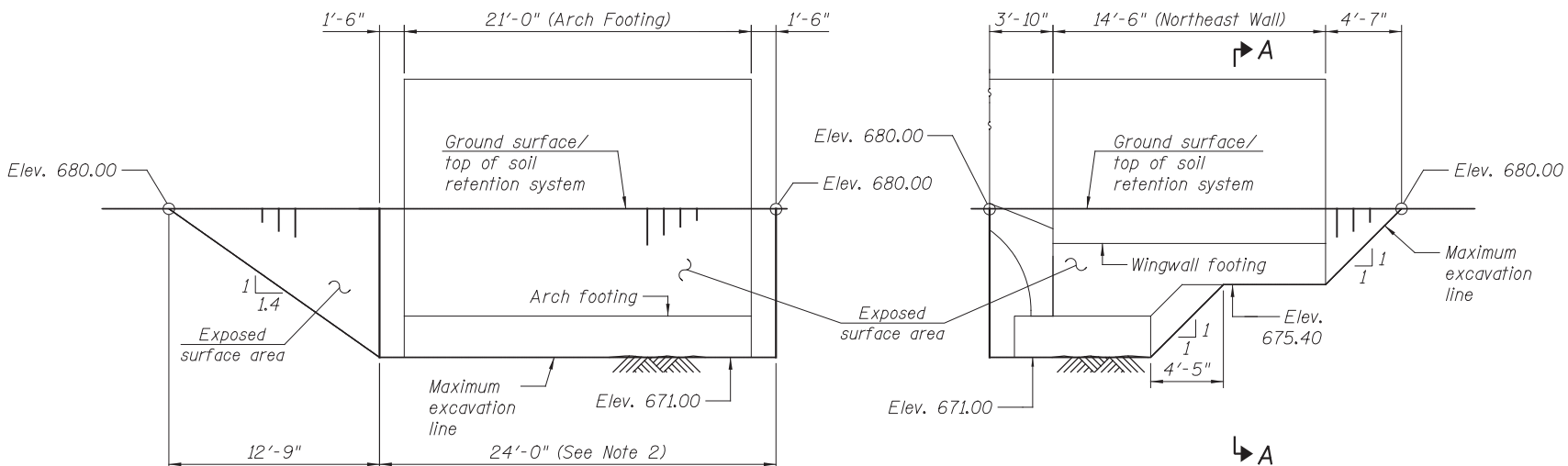
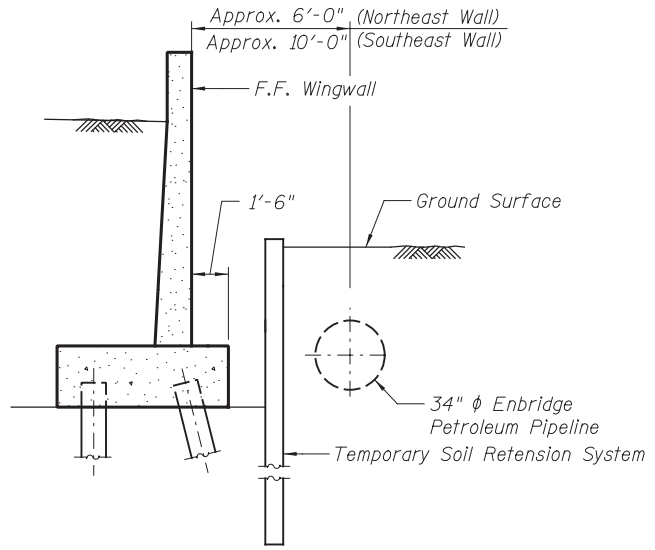


SOUTH ABUTMENT



NORTH ABUTMENT

TEMPORARY SOIL RETENTION SYSTEM



SECTION A-A

NOTES

1. Installing a cantilevered sheet piling design may not be feasible due to overhead electrical lines, and additional members or other retention systems may be necessary. The Contractor shall submit a temporary soil retention system design including plan details and calculations for review and acceptance by the Engineer.
2. Temporary soil retention system in front of abutments may be left in place. The retention system shall be removed 1'-0" below the finished grade.



USER NAME =	DESIGNED - KMP	REVISED
	CHECKED - AMK	REVISED
PLOT SCALE =	DRAWN - KMP	REVISED
PLOT DATE =	CHECKED - AMK	REVISED

**STATE OF ILLINOIS
DEPARTMENT OF TRANSPORTATION**

**TEMPORARY SOIL RETENTION SYSTEM
STRUCTURE NO. 022-3046**

SHEET NO. S-3 OF S-8 SHEETS

F.A.P. RTE.	SECTION	COUNTY	TOTAL SHEETS	SHEET NO.
311	2012-037I	DuPAGE	45	25
CONTRACT NO. 60T83				

ILLINOIS FED. AID PROJECT