

EXISTING

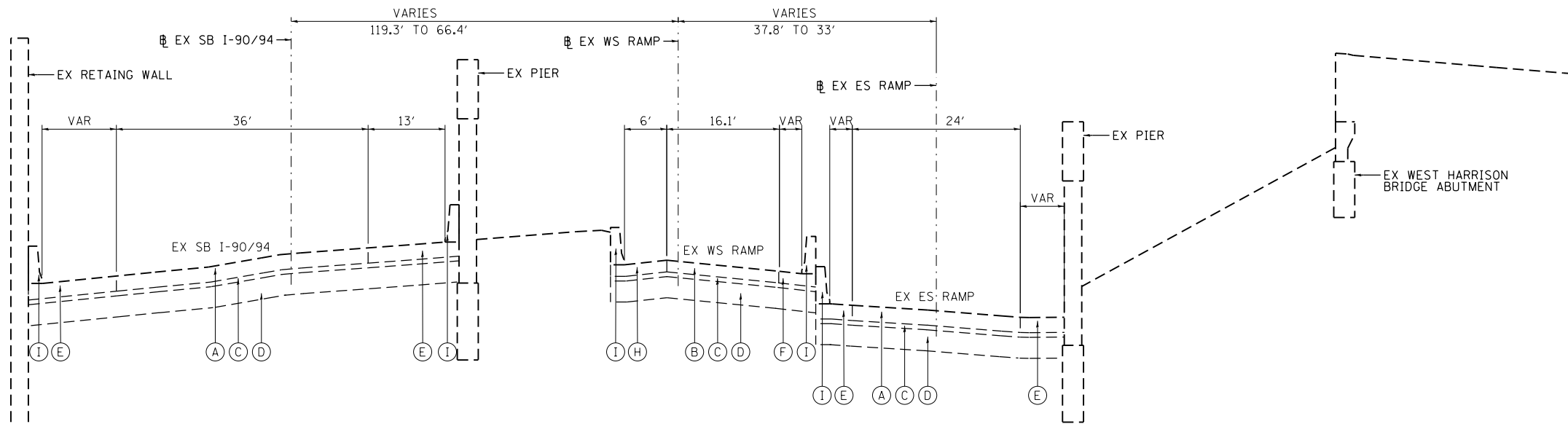
- (A) CONTINUOUSLY REINFORCED PCC PAVEMENT - 13"
- (B) PCC PAVEMENT - 10"
- (C) STABILIZED SUB-BASE (BAM) - 4"
- (D) POROUS GRANULAR EMBANKMENT (SPECIAL) - 0"-36"
- (E) BITUMINOUS SHOULDERS - 13"
- (F) BITUMINOUS SHOULDERS - 10"
- (G) PCC SHOULDERS - 13"
- (H) PCC SHOULDERS - 10"
- (I) CONCRETE BARRIER, TYPE 3

PROPOSED

- (1) HOT-MIX ASPHALT SURFACE COURSE, MIX "D", N70, 1 3/4"
- (2) HOT-MIX ASPHALT BINDER COURSE, IL-19.0, N70, 2 1/4"
- (3) PAVEMENT FABRIC
- (4) PORTLAND CEMENT CONCRETE BASE COURSE, 9"
- (5) BITUMINOUS MATERIALS (PRIME COAT)
- (6) AGGREGATE (PRIME COAT)
- (7) SUB-BASE GRANULAR MATERIAL, TYPE B, 6"
- (8) COMBINATION CURB AND GUTTER TYPE B V.12 (CDOT)
- (9) PORTLAND CEMENT CONCRETE SIDEWALK (SEE PLAN & PROFILE SHEETS FOR DEPTHS)
- (10) SAND CUSHION, 4 INCH, (CDOT)
- (11) #5 TIE BARS, 30" LONG AT 30" C-C (LONGITUDINAL CONSTRUCTION JOINT) (INCLUDED IN PRICE FOR BID FOR PCC BASE COURSE)
- (12) #5 TIE BARS, 30" LONG AT 30" C-C (INCLUDED IN PRICE FOR BID FOR CURB AND GUTTER)
- (13) TOPSOIL FURNISH AND PLACE, 4"
- (14) CONCRETE MEDIAN (SPECIAL)
- (15) TEMPORARY PAVEMENT (SEE TYPICAL SHT 6 FOR DETAILS)
- (16) SUB-BASE GRANULAR MATERIAL, TYPE B, 4"
- (17) COMBINATION CONCRETE CURB AND GUTTER, TYPE B-6.24
- (18) CONCRETE BARRIER, SINGLE FACE, 42 INCH HEIGHT
- (19) TEMPORARY CONCRETE BARRIER (FURNISH AND INSTALL), TO REMAIN IN PLACE
- (20) CONCRETE BARRIER BASE
- (21) CONCRETE BARRIER WALL (SPECIAL)
- (22) CONCRETE BARRIER BASE (SPECIAL)
- (23) CONDUIT EMBEDDED IN STRUCTURE, 4" DIA., PVC
- (24) SELECT GRANULAR BACKFILL, SPECIAL
- (25) CONCRETE MEDIAN SURFACE, 4 INCH
- (26) ORNAMENTAL FENCE, WROUGHT IRON

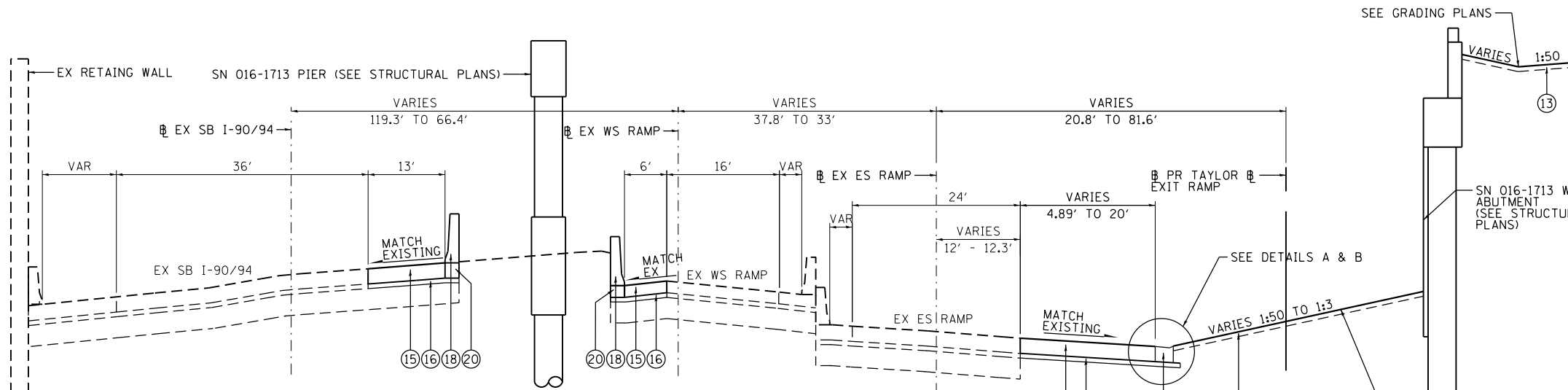
NOTES:

1. AS INDICATED ON THE ROADWAY PLANS, TYPICALLY AT LEAST 6' (4' MIN) OF PROPOSED SIDEWALK WIDTH MUST HAVE A CROSS SLOPE OF 1:64 OR LESS.
2. TYPICAL LOCAL ROADWAY CROSS SLOPE VARIES BETWEEN 1.4% AND 3.6% AS INDICATED ON THE PLANS. SEE ROADWAY AND GRADING PLAN DETAILS FOR ROADWAY SLOPE TRANSITIONS.
3. PCC BASE COURSE SHALL HAVE TRANSVERSE CONTRACTION JOINTS AT A 20' MAXIMUM SPACING. (INCLUDED IN PRICE FOR BID FOR PCC BASE COURSE)



**EXISTING TYPICAL SECTION
SB I-90/94, WS RAMP AND ES RAMP**

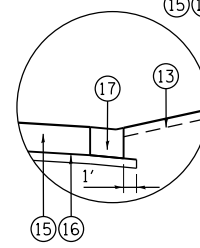
STA 105+64.34 TO STA 111+63.36 (ES RAMP)
 STA 20+24.01 TO 21+44.18 (WS RAMP)
 STA 9+13.08 TO 10+19.22 (SB I-90/94)



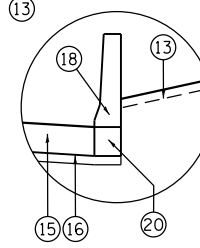
**PROPOSED TYPICAL SECTION
SB I-90/94, WS RAMP AND ES RAMP**

STA 105+64.34 TO STA 111+63.36 (ES RAMP)
 STA 20+24.01 TO 21+44.18 (WS RAMP)
 STA 9+13.08 TO 10+19.22 (SB I-90/94)

- (17) FROM STA 106+83.15 TO STA 109+71.75 (EX ES RAMP)
- (18) FROM STA 109+71.75 TO STA 111+60.43 (EX ES RAMP)



DETAIL A



DETAIL B

STA 106+83.15 TO STA 109+71.75 STA 109+71.75 TO STA 111+60.43

FILE PATH = p:\388039\p\m\l\ecommon\line\local\p\AECD\000\Documents\01_Americas\Transportation\60269938_Circle\Phase_1\000_CAD\005_Roadway\Sheets\60W26_Contract\0160W26-sht-Typical-05.dgn



D:\60W26-sht-Typical-05.dgn
 USER NAME = chitua
 PLOT SCALE = 10.0000' / in.
 PLOT DATE = 9/12/2013

DESIGNED - OPS	REVISED -
DRAWN - PHP	REVISED -
CHECKED - DBM	REVISED -
DATE - 07/28/13	REVISED -

**STATE OF ILLINOIS
DEPARTMENT OF TRANSPORTATION**

**TYPICAL SECTIONS
SB I-90/94, WS RAMP AND ES RAMP**

SCALE: NONE SHEET 5 OF 6 SHEETS STA. TO STA.

F.A.I. R.E.	SECTION	COUNTY	TOTAL SHEETS	SHEET NO.
90/94/290	2013-008R	COOK	559	32
CONTRACT NO. 60W26				
ILLINOIS FED. AID PROJECT				