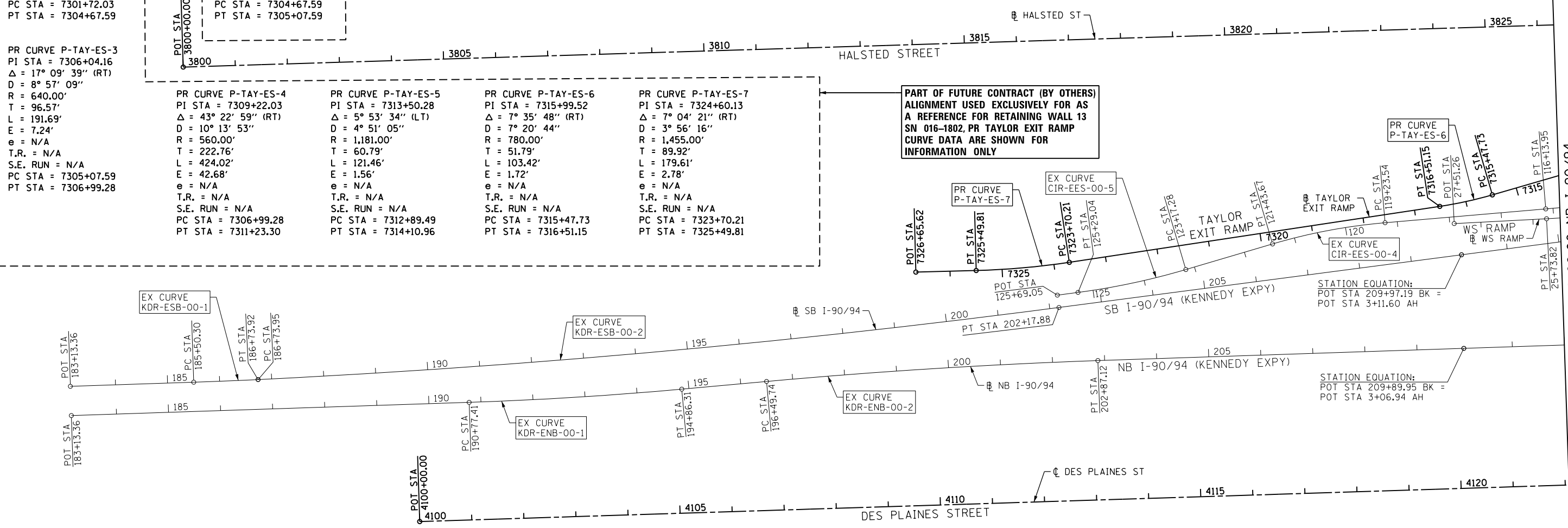


| | | | | | | | |
|---|--|--|---|---|--|--|--|
| PR CURVE P-TAY-ES-1 PI STA = 7303+20.62 Δ = 14° 41' 14" (RT) D = 4° 58' 09" R = 1,153.00' T = 148.59' L = 295.56' E = 9.54' e = N/A T.R. = N/A S.E. RUN = N/A PC STA = 7301+72.03 PT STA = 7304+67.59 | PR CURVE P-TAY-ES-2 PI STA = 7304+87.59 Δ = 1° 59' 16" (RT) D = 4° 58' 09" R = 1,153.00' T = 20.00' L = 40.00' E = 0.17' e = N/A T.R. = N/A S.E. RUN = N/A PC STA = 7304+67.59 PT STA = 7305+07.59 | EX CURVE KDR-ENB-00-1 PI STA = 192+81.92 Δ = 3° 17' 58" (LT) D = 0° 48' 25" R = 7,100.63' T = 204.51' L = 408.90' E = 2.94' PC STA = 190+77.41 PT STA = 194+86.31 | EX CURVE KDR-ENB-00-2 PI STA = 199+68.51 Δ = 3° 11' 12" (RT) D = 0° 30' 00" R = 11,460.32' T = 318.77' L = 637.38' E = 4.43' PC STA = 196+49.74 PT STA = 202+87.12 | EX CURVE KDR-ESB-00-1 PI STA = 186+12.11 Δ = 0° 55' 38" (LT) D = 0° 45' 00" R = 7,640.04' T = 61.81' L = 123.62' E = 0.25' PC STA = 185+50.30 PT STA = 186+73.92 | EX CURVE KDR-ESB-00-2 PI STA = 194+46.34 Δ = 4° 37' 53" (LT) D = 0° 18' 00" R = 19,100.00' T = 772.39' L = 1,543.93' E = 15.61' PC STA = 186+73.95 PT STA = 202+17.88 | EX CURVE CIR-EES-00-1 PI STA = 107+84.38 Δ = 40° 04' 47" (RT) D = 11° 27' 32" R = 500.01' T = 182.38' L = 349.77' E = 32.22' PC STA = 106+02.00 PCC STA = 109+51.77 | EX CURVE CIR-EES-00-2 PI STA = 111+22.58 Δ = 33° 11' 59" (RT) D = 9° 59' 59" R = 572.97' T = 170.81' L = 332.00' E = 24.92' PCC STA = 109+51.77 PCC STA = 112+83.77 |
|---|--|--|---|---|--|--|--|

| | | | | |
|--|---|---|---|---|
| PR CURVE P-TAY-ES-3 PI STA = 7306+04.16 Δ = 17° 09' 39" (RT) D = 8° 57' 09" R = 640.00' T = 96.57' L = 191.69' E = 7.24' e = N/A T.R. = N/A S.E. RUN = N/A PC STA = 7305+07.59 PT STA = 7306+99.28 | PR CURVE P-TAY-ES-4 PI STA = 7309+22.03 Δ = 43° 22' 59" (RT) D = 10° 13' 53" R = 560.00' T = 222.76' L = 424.02' E = 42.68' e = N/A T.R. = N/A S.E. RUN = N/A PC STA = 7306+99.28 PT STA = 7311+23.30 | PR CURVE P-TAY-ES-5 PI STA = 7313+50.28 Δ = 5° 53' 34" (LT) D = 4° 51' 05" R = 1,181.00' T = 60.79' L = 121.46' E = 1.56' e = N/A T.R. = N/A S.E. RUN = N/A PC STA = 7312+89.49 PT STA = 7314+10.96 | PR CURVE P-TAY-ES-6 PI STA = 7315+99.52 Δ = 7° 35' 48" (RT) D = 7° 20' 44" R = 780.00' T = 51.79' L = 103.42' E = 1.72' e = N/A T.R. = N/A S.E. RUN = N/A PC STA = 7315+47.73 PT STA = 7316+51.15 | PR CURVE P-TAY-ES-7 PI STA = 7324+60.13 Δ = 7° 04' 21" (RT) D = 3° 56' 16" R = 1,455.00' T = 89.92' L = 179.61' E = 2.78' e = N/A T.R. = N/A S.E. RUN = N/A PC STA = 7323+70.21 PT STA = 7325+49.81 |
|--|---|---|---|---|

**PART OF FUTURE CONTRACT (BY OTHERS)
ALIGNMENT USED EXCLUSIVELY FOR AS
A REFERENCE FOR RETAINING WALL 13
SN 016-1802, PR TAYLOR EXIT RAMP
CURVE DATA ARE SHOWN FOR
INFORMATION ONLY**



| EXIST EN RAMP | | | | |
|---------------|---------------------------|----------|----------------|----------------|
| POINT | DESCRIPTION | STATION | NORTHING | EASTING |
| POT | | 12+93.08 | 1,897,848.1878 | 1,170,893.4859 |
| PC | CIR-EEN-00-1 | 15+91.71 | 1,897,857.1288 | 1,171,191.9870 |
| PI | CIR-EEN-00-1 | 17+04.03 | 1,897,860.4915 | 1,171,304.2530 |
| PT | CIR-EEN-00-1 | 18+02.83 | 1,897,778.7914 | 1,171,381.3247 |
| PC | CIR-EEN-00-2 | 19+20.70 | 1,897,693.0531 | 1,171,462.2057 |
| PI | CIR-EEN-00-2 | 26+59.42 | 1,897,155.6972 | 1,171,969.1196 |
| PCC | CIR-EEN-00-2/CIR-EEN-00-3 | 25+97.46 | 1,897,894.0512 | 1,171,945.7405 |
| PI | CIR-EEN-00-3 | 27+12.77 | 1,898,009.3040 | 1,171,942.0911 |
| PT | CIR-EEN-00-3 | 28+19.03 | 1,898,096.3533 | 1,171,866.4674 |
| PC | CIR-EEN-00-4 | 30+42.56 | 1,898,265.6061 | 1,171,720.4502 |
| PI | CIR-EEN-00-4 | 31+37.75 | 1,898,337.2909 | 1,171,657.8157 |
| PT | CIR-EEN-00-4 | 32+28.69 | 1,898,430.5657 | 1,171,638.8002 |
| POT | | 33+64.77 | 1,898,563.9073 | 1,171,611.6164 |

| EXIST SW RAMP | | | | |
|---------------|---------------------------|----------|----------------|----------------|
| POINT | DESCRIPTION | STATION | NORTHING | EASTING |
| PC | CIR-ESW-00-1 | 13+90.03 | 1,898,782.0096 | 1,171,425.7159 |
| PI | CIR-ESW-00-1 | 16+45.46 | 1,898,527.0935 | 1,171,441.8766 |
| PCC | CIR-ESW-00-1/CIR-ESW-00-2 | 18+74.16 | 1,898,335.8773 | 1,171,272.5256 |
| PI | CIR-ESW-00-2 | 20+08.60 | 1,898,235.2352 | 1,171,183.3917 |
| PCC | CIR-ESW-00-2/CIR-ESW-00-3 | 21+41.29 | 1,898,163.1121 | 1,171,069.9371 |
| PI | CIR-ESW-00-3 | 22+38.85 | 1,898,110.7700 | 1,170,987.5993 |
| PT | CIR-ESW-00-3 | 23+33.05 | 1,898,099.8530 | 1,170,890.6455 |

| | | |
|---|---|--|
| EX CURVE CIR-EES-00-3 PI STA = 114+48.97 Δ = 4° 57' 10" (RT) D = 1° 30' 00" R = 3,819.73' T = 165.19' L = 330.18' E = 3.57' PCC STA = 112+83.77 PT STA = 116+13.95 | EX CURVE CIR-EES-00-4 PI STA = 120+33.98 Δ = 11° 33' 10" (LT) D = 5° 14' 53" R = 1,091.74' T = 110.44' L = 220.13' E = 5.57' PC STA = 119+23.54 PT STA = 121+43.67 | EX CURVE CIR-EES-00-5 PI STA = 124+23.38 Δ = 8° 59' 59" (RT) D = 4° 15' 00" R = 1,348.15' T = 106.10' L = 211.76' E = 4.17' PC STA = 123+17.28 PT STA = 125+29.04 |
|---|---|--|

| EX NW RAMP | | | | |
|------------|--------------|----------|----------------|----------------|
| POINT | DESCRIPTION | STATION | NORTHING | EASTING |
| POT | | 7+96.20 | 1,897,507.4719 | 1,171,763.3763 |
| PC | CIR-ENW-00-1 | 9+85.04 | 1,897,693.9515 | 1,171,733.5850 |
| PI | CIR-ENW-00-1 | 10+35.96 | 1,897,744.2285 | 1,171,725.5529 |
| PT | CIR-ENW-00-1 | 10+85.49 | 1,897,793.6250 | 1,171,737.8925 |
| PC | CIR-ENW-00-2 | 12+39.06 | 1,897,942.6154 | 1,171,775.1112 |
| PI | CIR-ENW-00-2 | 23+51.29 | 1,899,021.6848 | 1,172,044.6691 |
| PT | CIR-ENW-00-2 | 20+73.26 | 1,898,256.1989 | 1,171,237.7716 |
| PC | CIR-ENW-00-3 | 21+70.03 | 1,898,189.5975 | 1,171,167.5671 |
| PI | CIR-ENW-00-3 | 22+66.58 | 1,898,123.1471 | 1,171,097.5218 |
| PT | CIR-ENW-00-3 | 23+56.35 | 1,898,112.3438 | 1,171,001.5775 |
| POT | | 29+69.88 | 1,898,043.6940 | 1,170,391.8959 |

| PR TAYLOR EXIT RAMP | | | | |
|---------------------|-----------------------|------------|----------------|----------------|
| POINT | DESCRIPTION | STATION | NORTHING | EASTING |
| POT | | 7300+00.00 | 1,897,859.3643 | 1,170,489.3261 |
| PC | P-TAY-ES-1 | 7301+72.03 | 1,897,851.8722 | 1,170,661.1900 |
| PI | P-TAY-ES-1 | 7303+20.62 | 1,897,855.7720 | 1,170,809.7335 |
| PCC | P-TAY-ES-1/P-TAY-ES-2 | 7304+67.59 | 1,897,821.8823 | 1,170,954.4121 |
| PI | P-TAY-ES-2 | 7304+87.59 | 1,897,815.9728 | 1,170,973.5222 |
| PCC | P-TAY-ES-2/P-TAY-ES-3 | 7305+07.59 | 1,897,809.4040 | 1,170,992.4159 |
| PI | P-TAY-ES-3 | 7306+04.16 | 1,897,777.6920 | 1,171,083.6281 |
| PCC | P-TAY-ES-3/P-TAY-ES-4 | 7306+99.28 | 1,897,720.4792 | 1,171,161.4226 |
| PI | P-TAY-ES-4 | 7309+22.03 | 1,897,588.5048 | 1,171,340.8734 |
| PT | P-TAY-ES-4 | 7311+23.30 | 1,897,369.3289 | 1,171,380.6447 |
| PC | P-TAY-ES-5 | 7312+89.49 | 1,897,205.8036 | 1,171,410.3177 |
| PI | P-TAY-ES-5 | 7313+50.28 | 1,897,145.9948 | 1,171,421.1705 |
| PT | P-TAY-ES-5 | 7314+10.96 | 1,897,087.6162 | 1,171,438.1064 |
| PC | P-TAY-ES-6 | 7315+47.73 | 1,896,956.2590 | 1,171,476.2136 |
| PI | P-TAY-ES-6 | 7315+99.52 | 1,896,906.5239 | 1,171,490.6420 |
| PT | P-TAY-ES-6 | 7316+51.15 | 1,896,855.3179 | 1,171,498.3687 |
| PC | P-TAY-ES-7 | 7323+70.21 | 1,896,144.3089 | 1,171,605.6557 |
| PI | P-TAY-ES-7 | 7324+60.13 | 1,896,055.3983 | 1,171,619.0718 |
| PT | P-TAY-ES-7 | 7325+49.81 | 1,895,965.5123 | 1,171,621.4385 |
| POT | | 7326+65.62 | 1,895,849.7437 | 1,171,624.4867 |