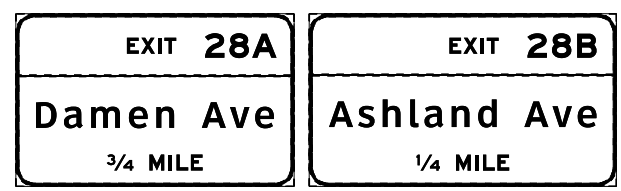
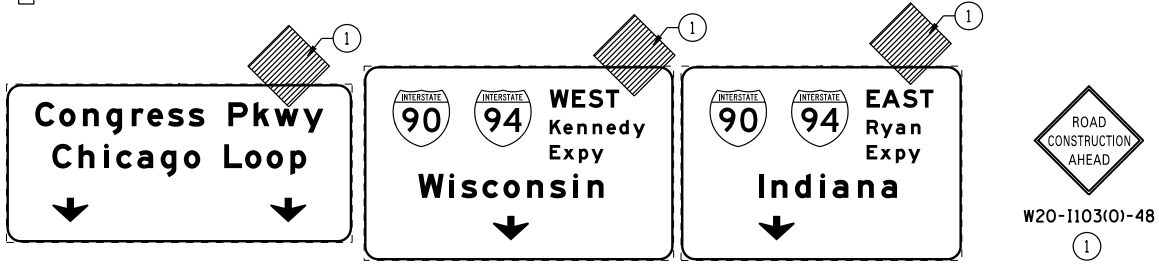
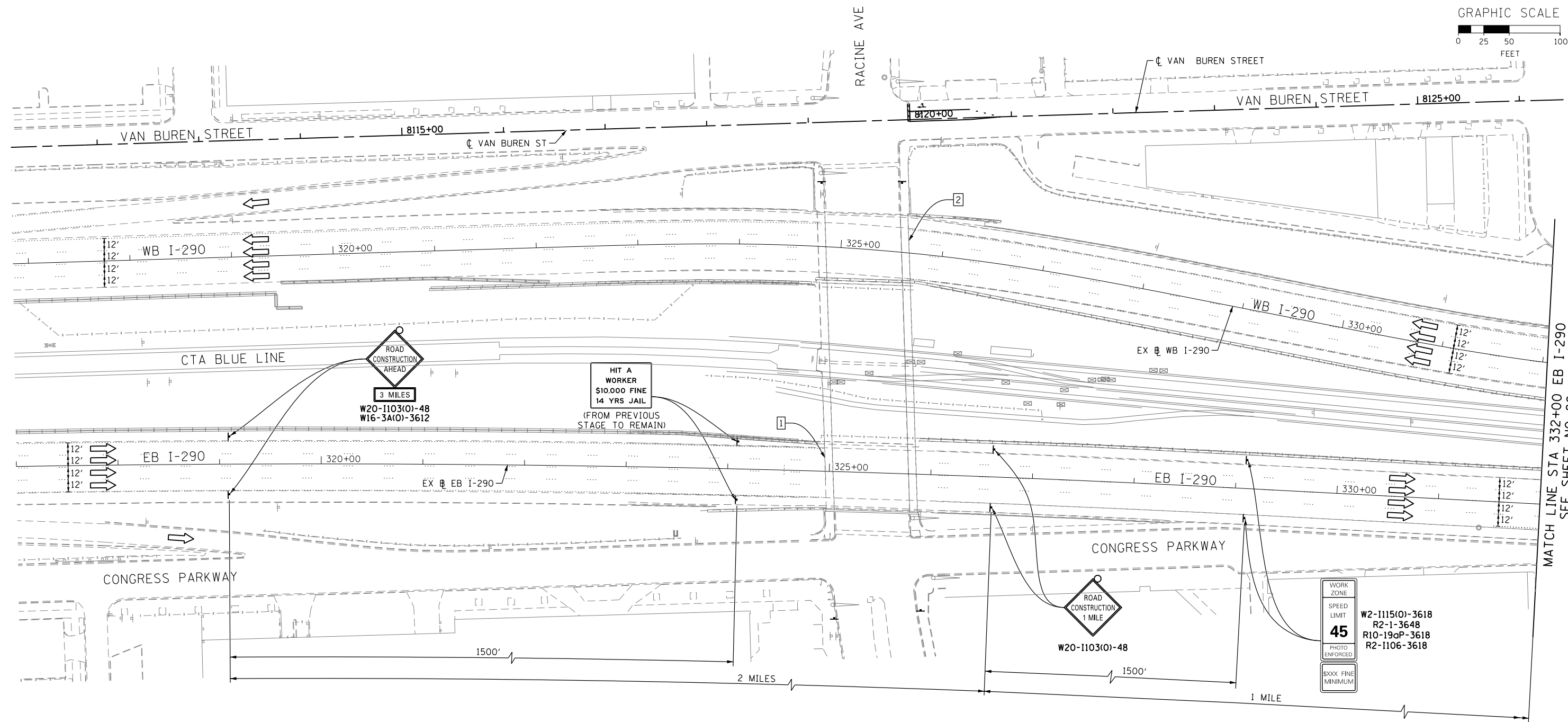
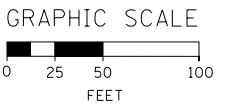


NOTE:

- UNLESS NOTED OTHERWISE, ALL STATIONS AND OFFSETS USED ARE TAKEN FROM EXISTING EB AND WB I-290 BASELINES.
- FOR LEGEND SEE SHEET NO. 65



D160W26-Sht-StagingIB-ML-01
 USER NAME = pimsarno
 PLOT SCALE = 50.0000' / in.
 PLOT DATE = 9/15/2013

DESIGNED - OPS	REVISED -
DRAWN - PHP	REVISED -
CHECKED - DBM	REVISED -
DATE - 9/15/13	REVISED -

STATE OF ILLINOIS
 DEPARTMENT OF TRANSPORTATION

SUGGESTED STAGES OF CONSTRUCTION AND TRAFFIC CONTROL PLAN
 MAINLINE STAGING 1B
 SCALE: 1" = 50' SHEET 1 OF 8 SHEETS STA. TO STA.

F.A.I. RTE.	SECTION	COUNTY	TOTAL SHEETS	SHEET NO.
90/94/290	2013-008R	COOK	559	79
CONTRACT NO. 60W26				
ILLINOIS FED. AID PROJECT				

FILE PATH = p:\388035-p\m\l\escomon\line\local\p\w\ec\0\0\Documents\01_Americas\Transportation\60269938_Circle\Phase_1\1000_CAD\005_Roadway\Sheets\60W26-Sht-StagingIB-ML-01