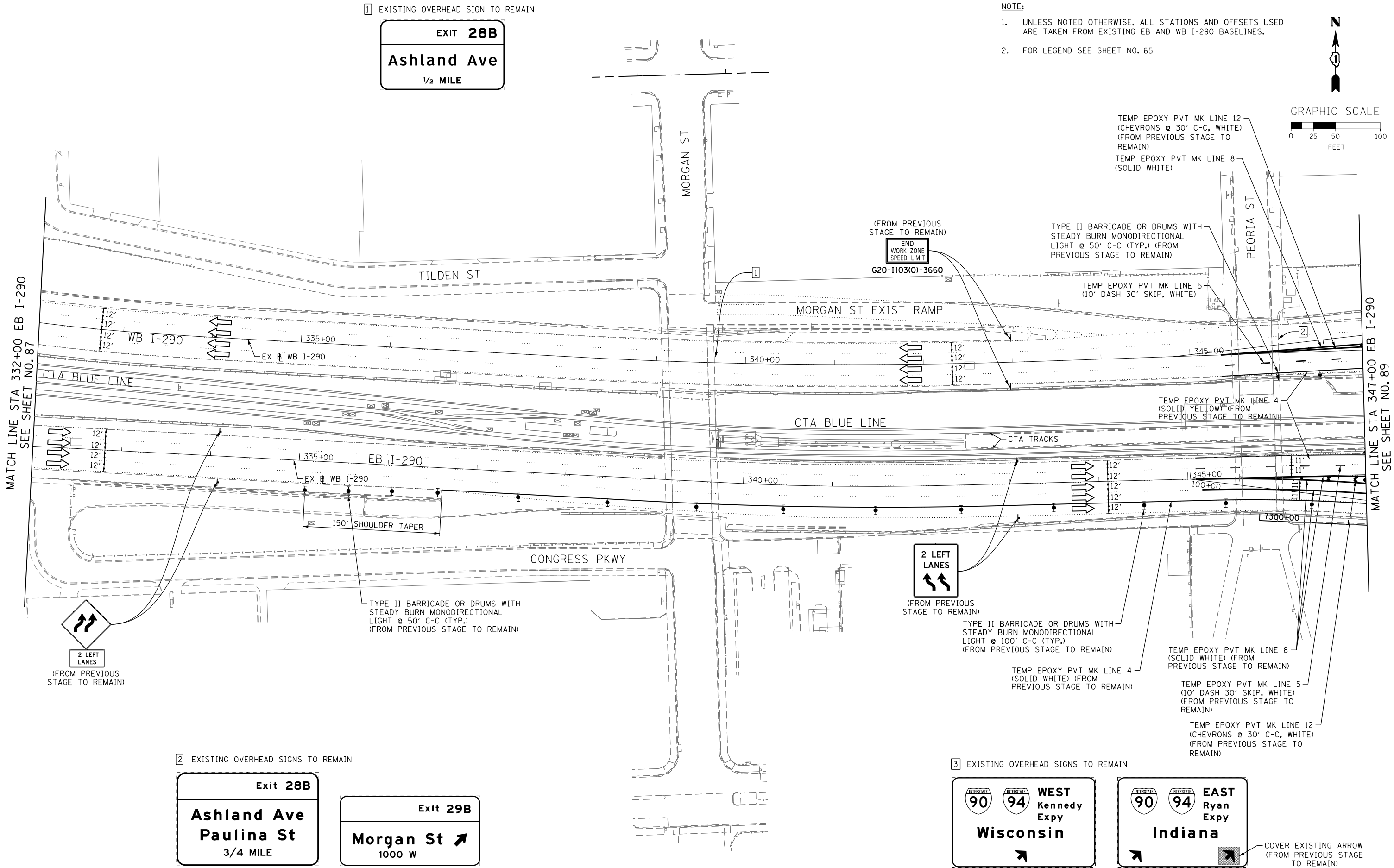
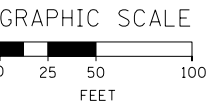


1 EXISTING OVERHEAD SIGN TO REMAIN

EXIT 28B
Ashland Ave
1/2 MILE

NOTE:

- UNLESS NOTED OTHERWISE, ALL STATIONS AND OFFSETS USED ARE TAKEN FROM EXISTING EB AND WB I-290 BASELINES.
- FOR LEGEND SEE SHEET NO. 65



MATCH LINE STA 332+00 EB I-290
SEE SHEET NO. 87

MATCH LINE STA 347+00 EB I-290
SEE SHEET NO. 89

2 EXISTING OVERHEAD SIGNS TO REMAIN

Exit 28B
Ashland Ave
Paulina St
3/4 MILE

Exit 29B
Morgan St
1000 W

3 EXISTING OVERHEAD SIGNS TO REMAIN

90 94 WEST Kennedy Expy
Wisconsin

90 94 EAST Ryan Expy
Indiana

COVER EXISTING ARROW
(FROM PREVIOUS STAGE TO REMAIN)

FILE PATH = ...
AECOM **Tran**Systems

DI60W26-Sht-Staging2A-ML-02	DESIGNED - OPS	REVISED -
USER NAME = pimsarno	DRAWN - PHP	REVISED -
PLOT SCALE = 50.0000' / in.	CHECKED - DBM	REVISED -
PLOT DATE = 9/15/2013	DATE - 9/15/13	REVISED -

STATE OF ILLINOIS
DEPARTMENT OF TRANSPORTATION

SUGGESTED STAGES OF CONSTRUCTION AND TRAFFIC CONTROL PLAN
MAINLINE STAGING 2A

SCALE: 1" = 50' SHEET 2 OF 8 SHEETS STA. TO STA.

F.A.I. RTE. 90/94/290	SECTION 2013-008R	COUNTY COOK	TOTAL SHEETS 559	SHEET NO. 88
CONTRACT NO. 60W26				
ILLINOIS FED. AID PROJECT				