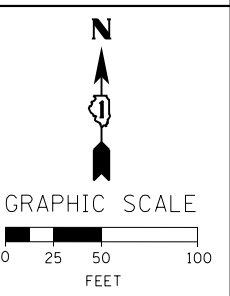
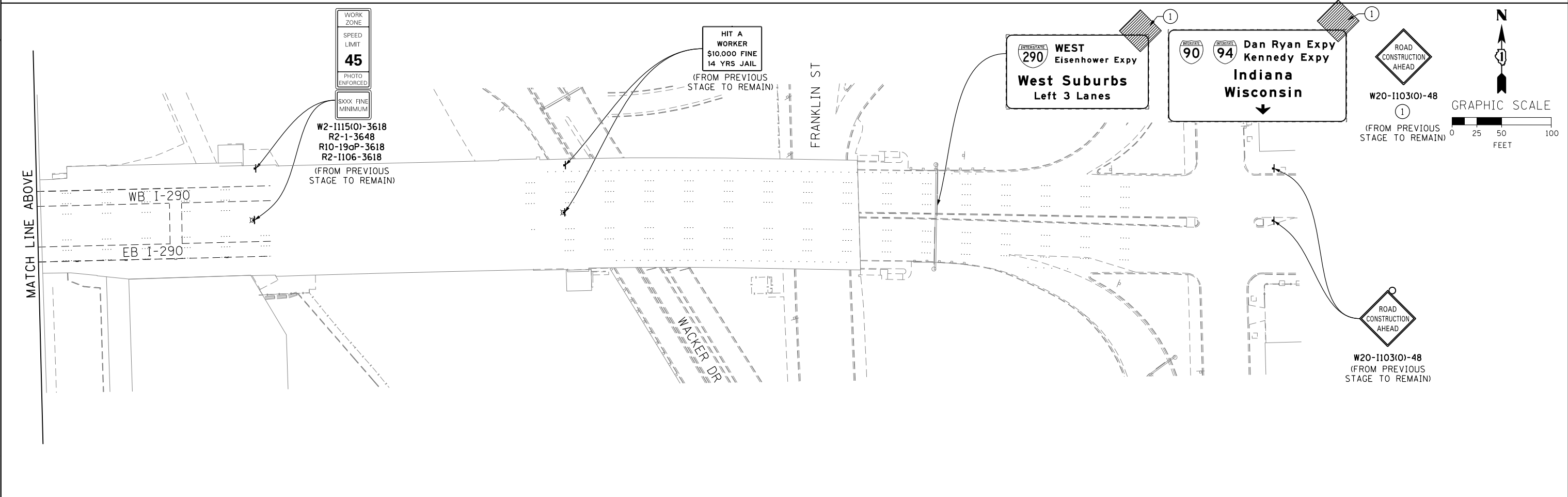
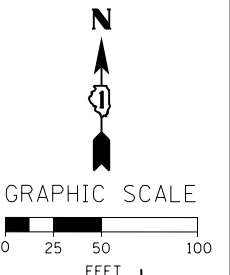
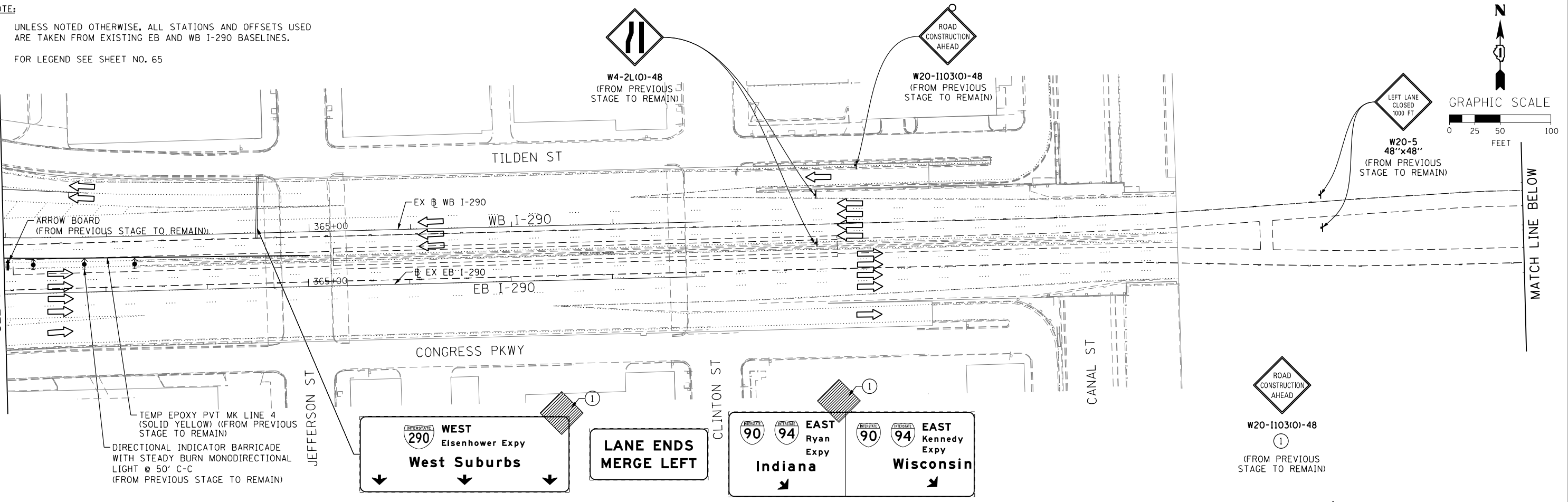


- NOTE:
- UNLESS NOTED OTHERWISE, ALL STATIONS AND OFFSETS USED ARE TAKEN FROM EXISTING EB AND WB I-290 BASELINES.
 - FOR LEGEND SEE SHEET NO. 65

MATCH LINE STA 362+00 EB I-290
SEE SHEET NO. 97



FILE PATH = p:\388035\pmt\escomon\line\local\PAE\CD\00\Documents\01_Americas\Transportation\60269938_Circle\Phase_1\1000_CD\006_Roadway_Sheets\60W26-Sht-Staging2B-ML-04

DI60W26-Sht-Staging2B-ML-04	DESIGNED - OPS	REVISED -
USER NAME = pimsarno	DRAWN - PHP	REVISED -
PLOT SCALE = 50.0000' / in.	CHECKED - DBM	REVISED -
PLOT DATE = 9/15/2013	DATE - 9/15/13	REVISED -

**STATE OF ILLINOIS
DEPARTMENT OF TRANSPORTATION**

**SUGGESTED STAGES OF CONSTRUCTION AND TRAFFIC CONTROL PLAN
MAINLINE STAGING 2B**

SCALE: 1" = 50' SHEET 4 OF 8 SHEETS STA. TO STA.

F.A.I. RTE.	SECTION	COUNTY	TOTAL SHEETS	SHEET NO.
90/94/290	2013-008R	COOK	559	98
CONTRACT NO. 60W26				
ILLINOIS FED. AID PROJECT				