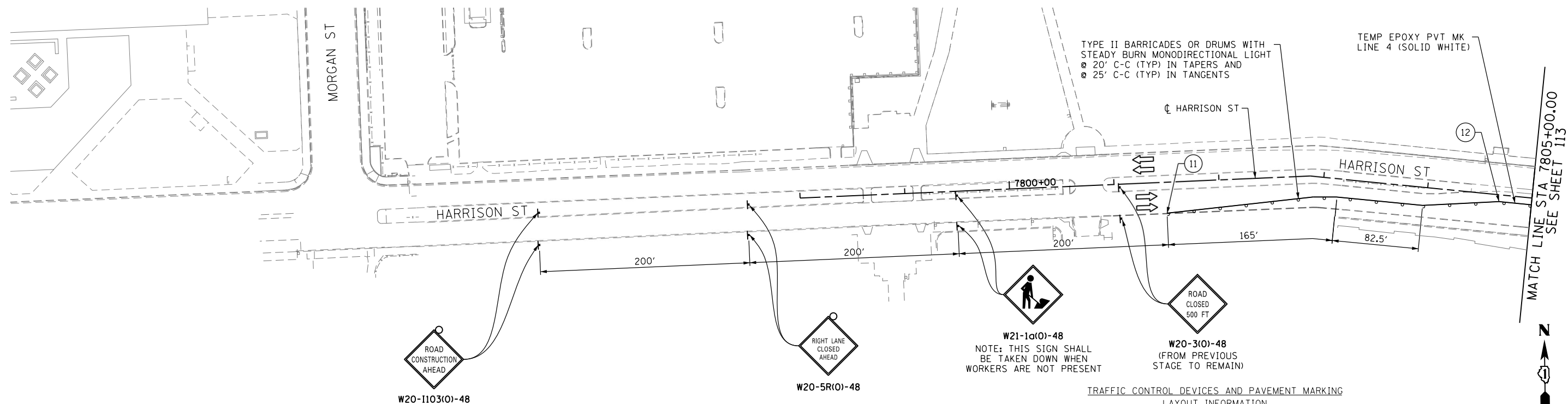
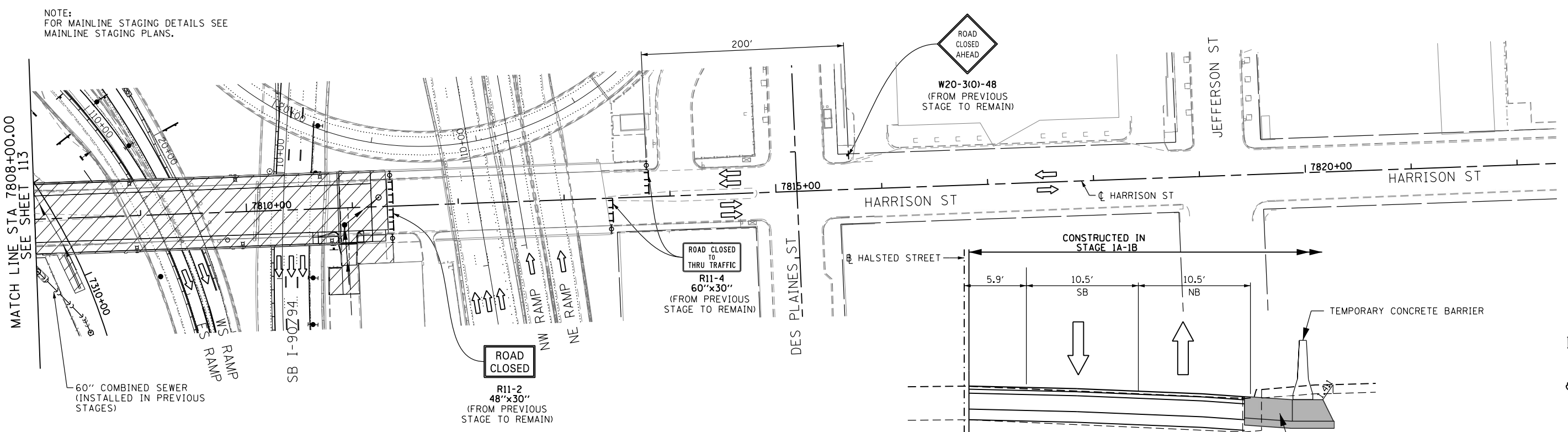
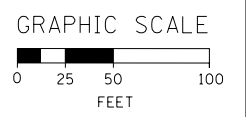


FILE PATH = p:\388039-par\1\escomon\line\local\p\w26\26\Documents\01\_Americas\Transportation\60269938\_Circle\Phase\_1\1000\_CAD\006\_Roadway\_Sheets\60W26-Sht-Staging2A2B-LR-02



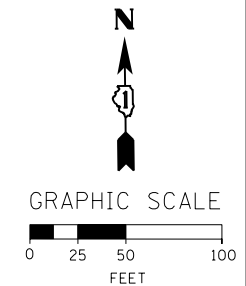
TRAFFIC CONTROL DEVICES AND PAVEMENT MARKING LAYOUT INFORMATION

POINT	BASELINE	STATION	OFFSET	LT/RT
11	P-HAR-CL	7801+49.32	29.5'	RT
12	P-HAR-CL	7804+69.07	6.5'	RT



SECTION A-A

SCALE: NONE  
SEE ADDITIONAL INFORMATION ON SHEET 113



D160W26-Sht-Staging2A2B-LR-02  
USER NAME = pimsarno  
PLOT SCALE = 50.0000' / in.  
PLOT DATE = 9/15/2013

DESIGNED - OPS  
DRAWN - PHP  
CHECKED - DBM  
DATE - 9/15/13

REVISED -  
REVISED -  
REVISED -  
REVISED -

STATE OF ILLINOIS  
DEPARTMENT OF TRANSPORTATION

SUGGESTED STAGES OF CONSTRUCTION AND TRAFFIC CONTROL PLAN  
LOCAL ROADS - STAGE 2A-2B  
SCALE: 1" = 50'  
SHEET 2 OF 2 SHEETS  
STA. TO STA.

F.A.I. RTE. 90/94/290	SECTION 2013-008R	COUNTY COOK	TOTAL SHEETS 559	SHEET NO. 114
CONTRACT NO. 60W26				
ILLINOIS FED. AID PROJECT				