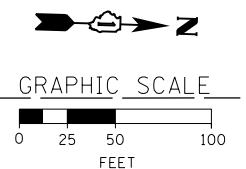
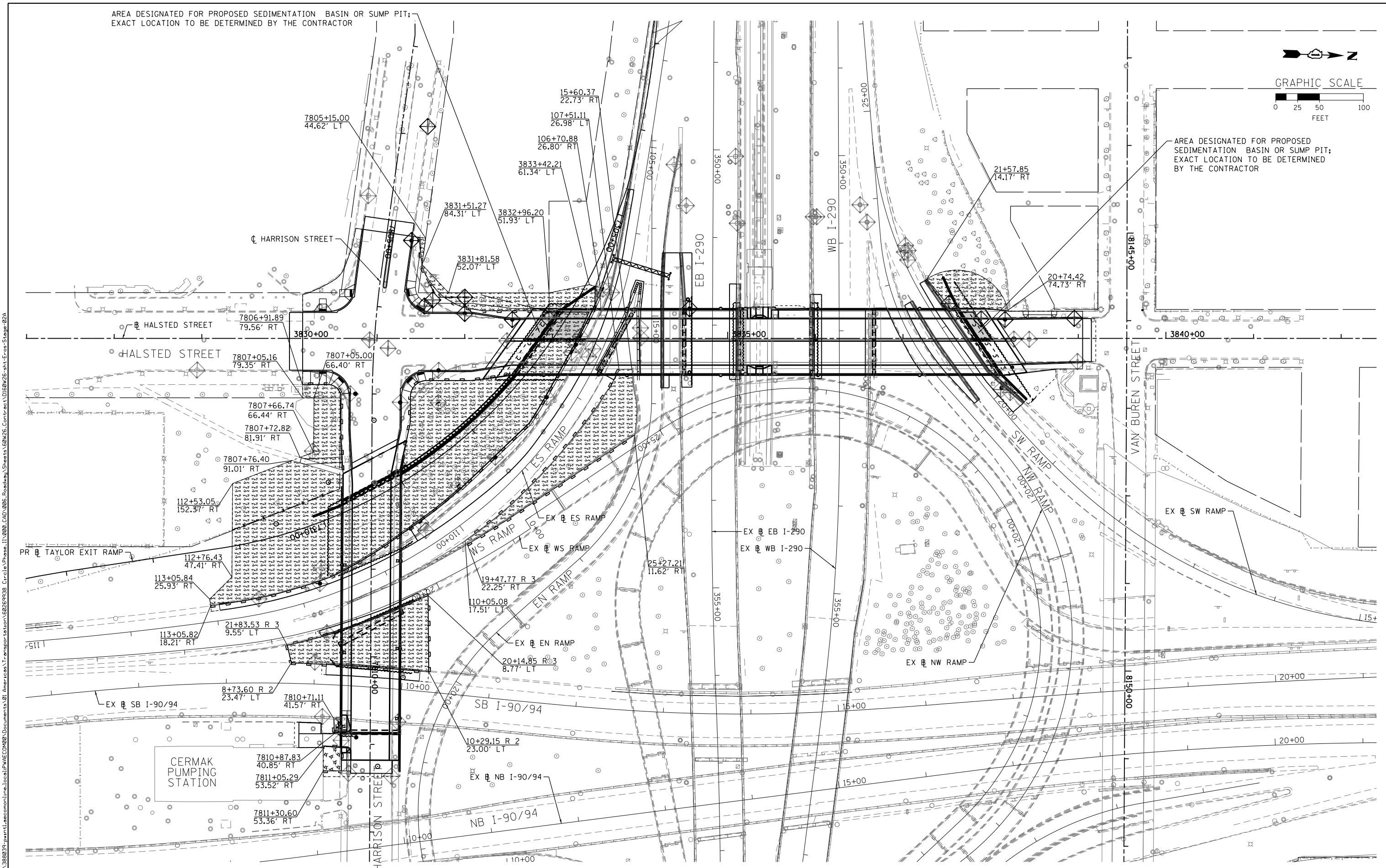


AREA DESIGNATED FOR PROPOSED SEDIMENTATION BASIN OR SUMP PIT;  
EXACT LOCATION TO BE DETERMINED BY THE CONTRACTOR



AREA DESIGNATED FOR PROPOSED SEDIMENTATION BASIN OR SUMP PIT;  
EXACT LOCATION TO BE DETERMINED BY THE CONTRACTOR



FILE PATH = p:\388035-p\m\1\escomon\me\local\p\AEC\000\Documents\01\_Americas\Transportation\60269938\_Circle\Phase 1\1000\_CAD\005\_Roadway\_Sheets\60W26-sht-Eros-Stage-02A



D160W26-sht-Eros-Stage-02A  
USER NAME = chiuA  
PLOT SCALE = 50.0000' / in.  
PLOT DATE = 9/11/2013

DESIGNED - AFC	REVISED -
DRAWN - AFC	REVISED -
CHECKED - DBM	REVISED -
DATE - 9/15/13	REVISED -

**STATE OF ILLINOIS  
DEPARTMENT OF TRANSPORTATION**

**EROSION AND SEDIMENTATION CONTROL PLAN  
STAGE 2A**

SCALE: 1"=50' SHEET 3 OF 5 SHEETS STA. TO STA.

F.A.I. RTE. 90/94/290	SECTION 2013-008R	COUNTY COOK	TOTAL SHEETS 559	SHEET NO. 126
CONTRACT NO. 60W26			ILLINOIS FED. AID PROJECT	